

APP CRS	Rwy Idg	5201
150°	TDZE	1600
	Apt Elev	1623

RNAV (GPS) RWY 15

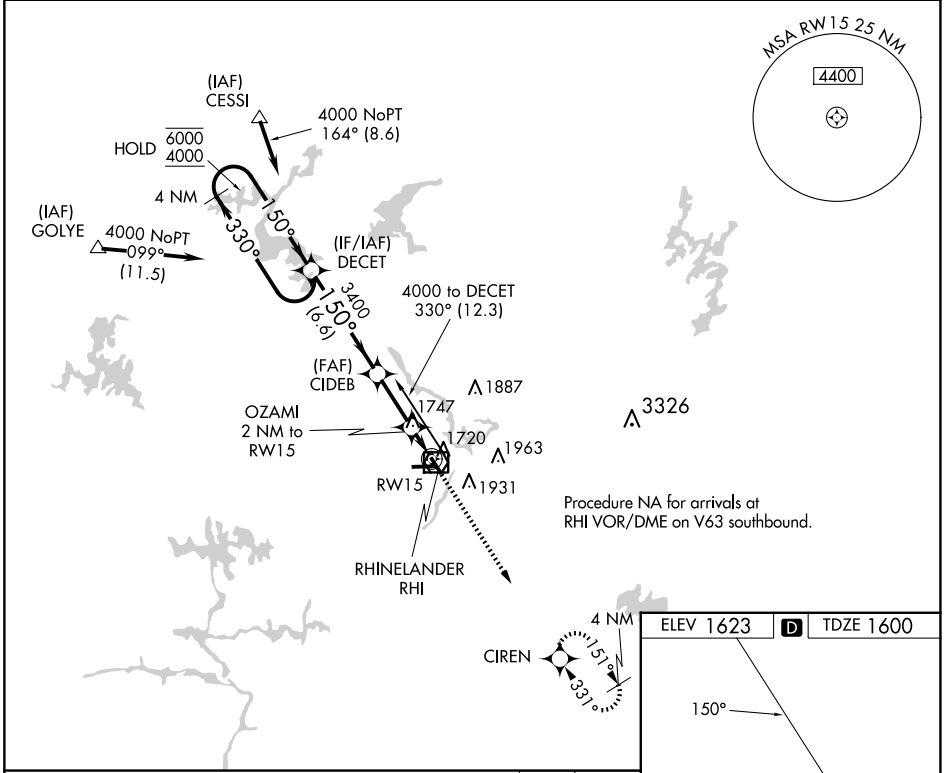
RHINELANDER/ONEIDA COUNTY (RHI)

RNP APCH - GPS.

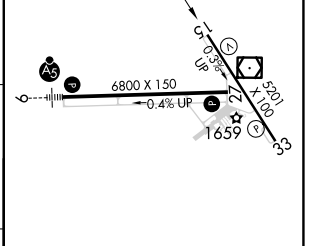
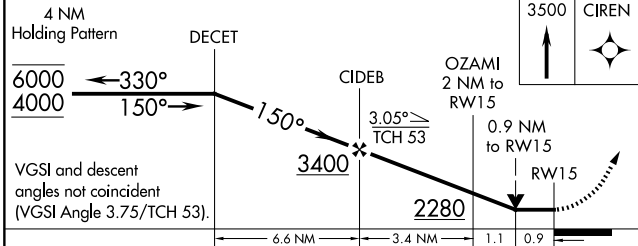
⚠ Rwy 15 helicopter visibility reduction below 3/4 SM NA.

MISSED APPROACH:
Climb to 3500 direct
CIREN and hold.

ASOS 126.825	MINNEAPOLIS CENTER 133.65 281.5	UNICOM 123.0 (CTAF)
------------------------	---	-------------------------------



Procedure NA for arrivals at RHI VOR/DME on V63 southbound.



CATEGORY	A	B	C	D
LNVA MDA	2000-1	400 (400-1)	2000-1 1/8	400 (400-1 1/8)
CIRCLING	2100-1 477 (500-1)	2260-1 637 (700-1)	2260-1 3/4 637 (700-1 3/4)	2280-2 657 (700-2)

HIRL Rws 9-27 and 15-33
REIL Rws 15, 27 and 33

EC-3, 15 MAY 2025 to 12 JUN 2025

EC-3, 15 MAY 2025 to 12 JUN 2025