

LOC I-RHI 111.3	APP CRS 091°	Rwy Idg 6799
		TDZE 1623
		Apt Elev 1623

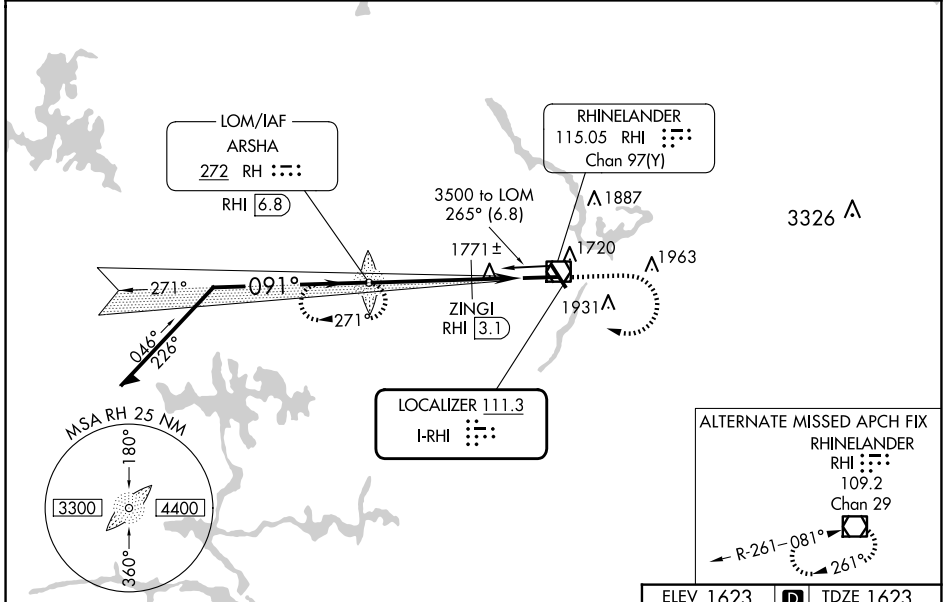
ILS or LOC RWY 9
RHINELANDER/ONEIDA COUNTY (RHI)

ADF or DME required.

MAISR
 MISSED APPROACH:
 Climb to 2100 then climbing right turn to 3500 direct ARSHA LOM/RHI VOR/DME 6.8 DME and hold, continue climb-in-hold to 3500.

NA ** DME from RHI VOR/DME.

ASOS 126.825	MINNEAPOLIS CENTER 133.65 281.5	UNICOM 123.0 (CTAF)
------------------------	---	-------------------------------



*2240 when using Tomahawk altimeter setting. Remain within 10 NM

RH LOM RHI [6.8]

2100 3500 RH

3500 271° 091° 3500

3477

ZINGI RHI [3.1]

*2180

3.7 NM 1.9 NM

GS 3.00° TCH 52

ELEV 1623	D	TDZE 1623
-----------	----------	-----------

CATEGORY	A	B	C	D
S-ILS 9	1823-½ 200 (200-½)			
S-LOC 9	2180-½	557 (600-½)	2180-1⅓	557 (600-1⅓)
C CIRCLING	2180-1 557 (600-1)	2260-1 637 (700-1)	2260-1¾ 637 (700-1¾)	2280-2 657 (700-2)
ZINGI FIX MINIMUMS**				
S-LOC 9	2040-½	417 (500-½)	2040-¾	417 (500-¾)
C CIRCLING	2100-1 477 (500-1)	2260-1 637 (700-1)	2260-1¾ 637 (700-1¾)	2280-2 657 (700-2)

Diagram showing the final approach path:
 - Angle: 091°
 - Altitudes: 6800 X 150, 2201, 1659, 1623
 - Gradient: -0.4% UP
 - Symbols: A5, A3, A1, A2, A4, A6, A7, A8, A9, A10, A11, A12, A13, A14, A15, A16, A17, A18, A19, A20, A21, A22, A23, A24, A25, A26, A27, A28, A29, A30, A31, A32, A33, A34, A35, A36, A37, A38, A39, A40, A41, A42, A43, A44, A45, A46, A47, A48, A49, A50, A51, A52, A53, A54, A55, A56, A57, A58, A59, A60, A61, A62, A63, A64, A65, A66, A67, A68, A69, A70, A71, A72, A73, A74, A75, A76, A77, A78, A79, A80, A81, A82, A83, A84, A85, A86, A87, A88, A89, A90, A91, A92, A93, A94, A95, A96, A97, A98, A99, A100

EC-3, 15 MAY 2025 to 12 JUN 2025

EC-3, 15 MAY 2025 to 12 JUN 2025

HIRL Rwys 9-27 and 15-33	I
REIL Rwys 15, 27 and 33	I
FAF to MAP 5.6 NM	

Knots	60	90	120	150	180
Min:Sec	5:36	3:44	2:48	2:14	1:52