

DUBLIN, VIRGINIA

AL-5084 (FAA)

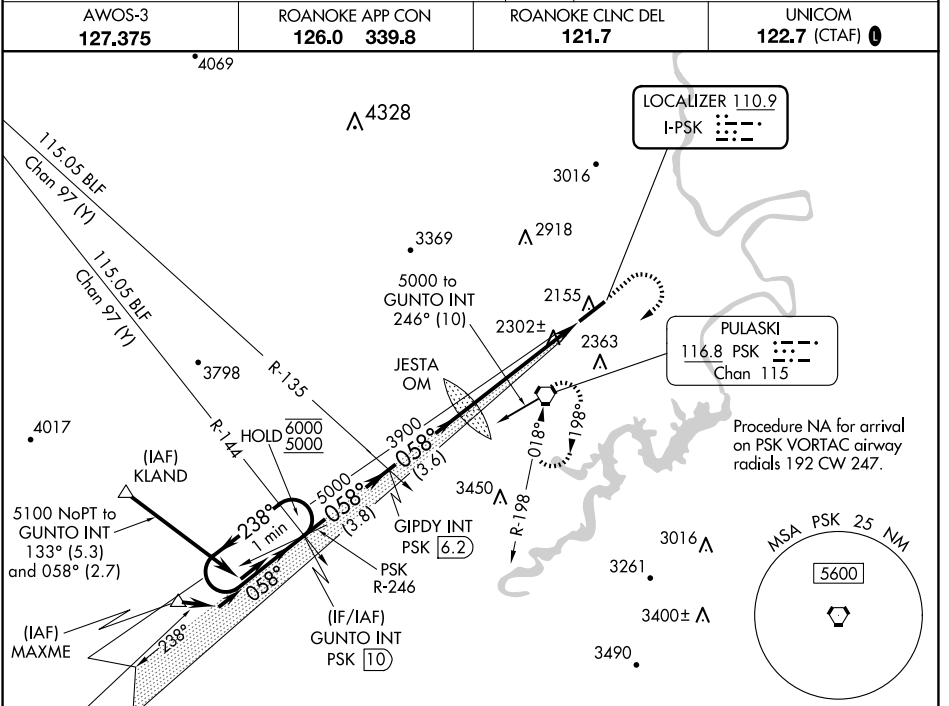
24305

LOC I-PSK 110.9	APP CRS 058°	Rwy Idg TDZE Apt Elev 6201 2105 2105
---------------------------	------------------------	--

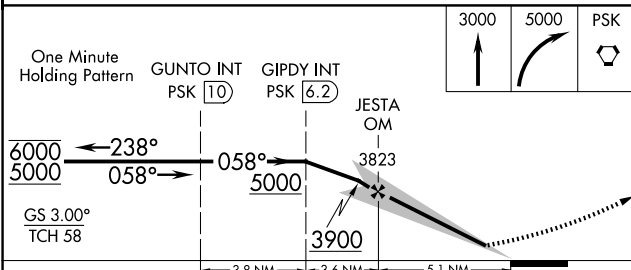
ILS or LOC Z RWY 6

NEW RIVER VALLEY (PSK)

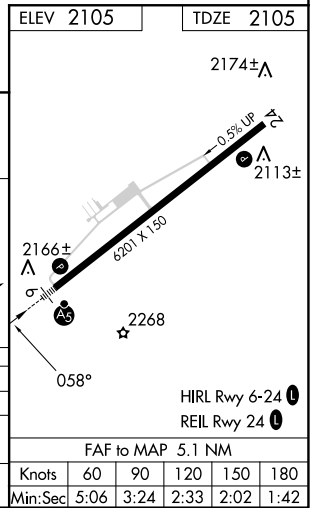
<p>▼</p> <p>▲ NA</p> <p>Inop table does not apply to S-ILS 6 all Cats and S-LOC 6 Cats A and B. For inop ALS, increase S-LOC 6 Cat C/D visibility to 1 3/8 SM. Circling NA for Cat D northwest of Rwy 6-24.</p>	<p>MALSRL</p>	<p>MISSED APPROACH: Climb to 3000 then climbing right turn to 5000 direct PSK VORTAC and hold, continue climb-in-hold to 5000.</p>	
	<p>AWOS-3 127.375</p>	<p>ROANOKE APP CON 126.0 339.8</p>	<p>ROANOKE CLNC DEL 121.7</p>



ELEV 2105	TDZE 2105
-----------	-----------



CATEGORY	A	B	C	D
S-ILS 6		2305-1	200 (200-1)	
S-LOC 6		2560-1	455 (500-1)	
CIRCLING	2620-1 515 (600-1)	2680-1 575 (600-1)	2780-2 675 (700-2)	2780-2 1/4 675 (700-2 1/4)



DUBLIN, VIRGINIA
Amdt 5B 25FEB21

37°08'N-80°41'W

NEW RIVER VALLEY (PSK)

ILS or LOC Z RWY 6

NE-3, 15 MAY 2025 to 12 JUN 2025

NE-3, 15 MAY 2025 to 12 JUN 2025