

WAAS CH <b>65629</b> <b>W15A</b>	APP CRS <b>152°</b>	Rwy Idg TDZE <b>12</b> Apt Elev <b>15</b>	<b>6500</b>
--	------------------------	---	-------------

# RNAV (GPS) RWY 15

LAKE CHARLES RGNL (LCH)

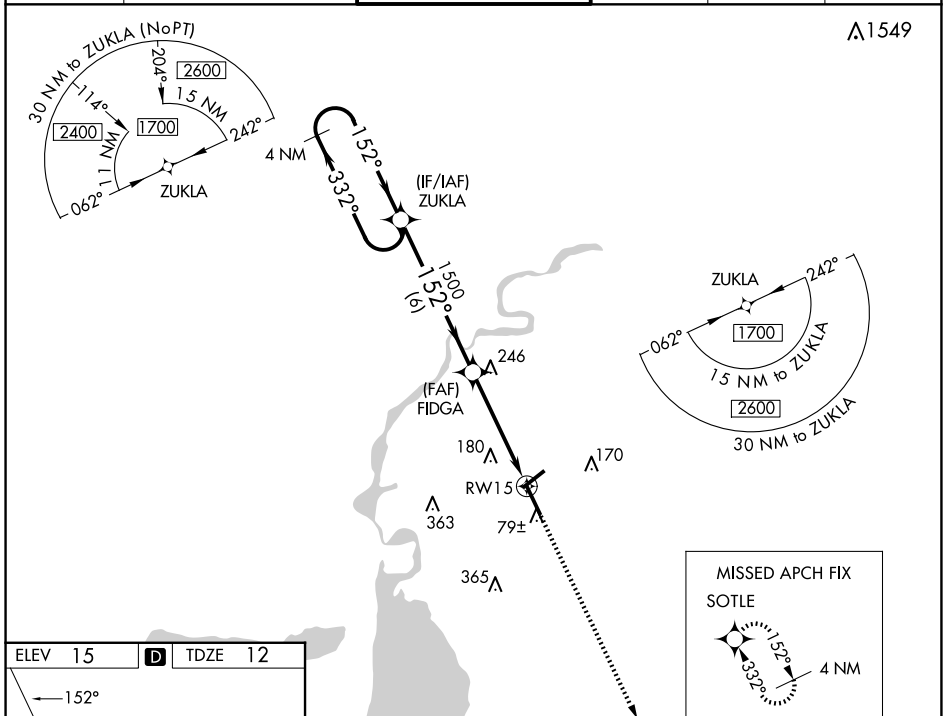
RNP APCH.

For uncompensated Baro-VNAV systems, LNAV/VNAV NA below -3°C (27°F) or above 43°C (109°F). For inop MALS, increase LNAV-VNAV all Cats visibility to ¾ and LNAV Cats C and D to 1 ½ mile. \*\*RVR 1800 authorized with use of FD or AP or HUD to DA.

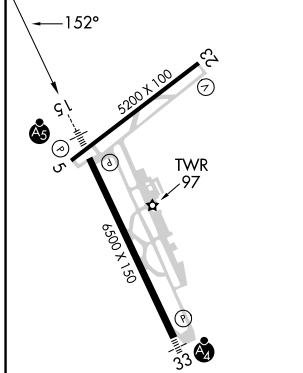


MISSED APPROACH:  
Climb to 1900 direct  
SOTLE and hold.

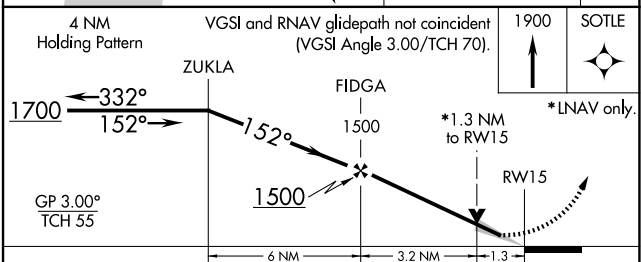
ATIS <b>118.75</b>	LAKE CHARLES APP CON * <b>119.35 353.75</b>	LAKE CHARLES TOWER * <b>120.7 (CTAF) 0 257.8</b>	GND CON <b>121.8</b>	CLNC DEL <b>126.25</b>	UNICOM <b>122.95</b>
-----------------------	--	---	-------------------------	---------------------------	-------------------------



ELEV 15	<b>D</b>	TDZE 12
---------	----------	---------



REIL Rws 5 and 23  
MIRL Rwy 5-23  
HIRL Rwy 15-33



CATEGORY	A	B	C	D
LPV DA		212/24	200 (200-½)	
LNAV/VNAV DA		301/24	289 (300-½)	
LNAV MDA	500/24	488 (500-½)	500/50	488 (500-1)
<b>C</b> CIRCLING	500-1	485 (500-1)	580-1½ 565 (600-1½)	680-2¼ 665 (700-2¼)

SC-4, 15 MAY 2025 to 12 JUN 2025

SC-4, 15 MAY 2025 to 12 JUN 2025