

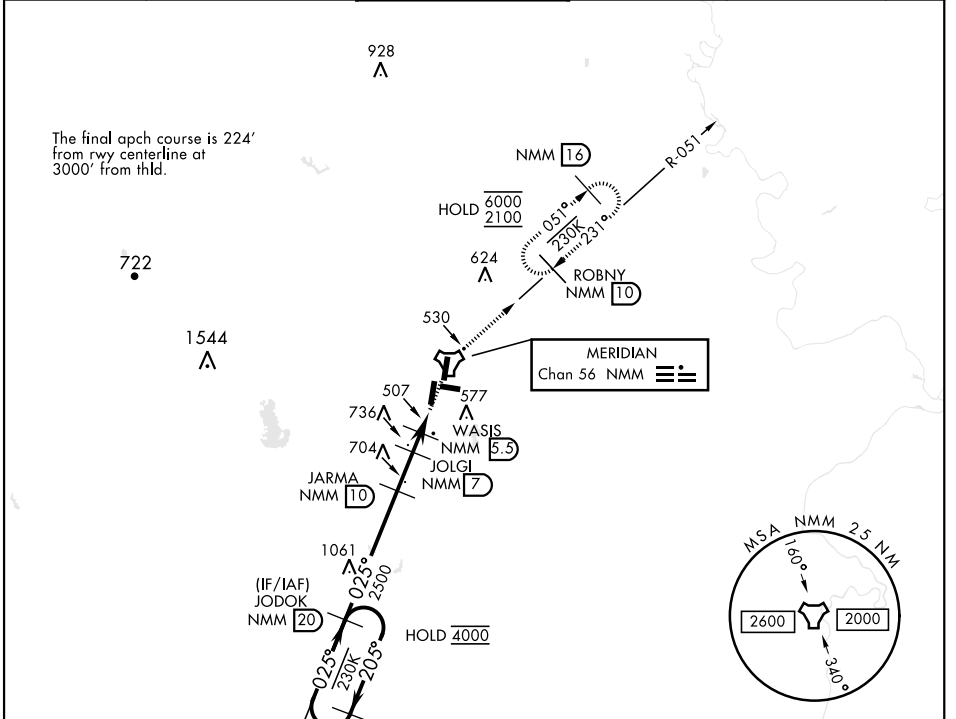
MERIDIAN, MISSISSIPPI

TACAN Y RWY 1L

TACAN NMM Chan 56	APCH CRS 025°	Rwy Idg 8003 TDZE 254 Arprt Elev 316	AL-5079 [USN]	MERIDIAN NAS (MC CAIN FIELD) (KNMM)
--------------------------	----------------------	---	---------------	-------------------------------------

RADAR required.	ALSF-1	MISSED APPROACH: Climb to 2100 direct NMM TACAN then via R-051 to ROBNY and hold.
* When ALS inop, increase CAT AB vis to 1 mile; CAT CDE vis to 1 1/8 miles.		

ATIS * 290.525	APP CON 120.95 276.4	NAVY MC CAIN TOWER * 126.2 340.2	GND CON 336.4	CLNC DEL 301.0	ASR/PAR
-----------------------	-----------------------------	---	----------------------	-----------------------	---------



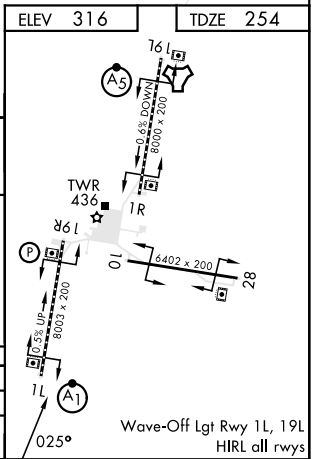
EMERG SAFE ALT 100 NM 3700

2100	NMM		NMM R-051
------	-----	--	-----------

The profile view shows the vertical clearance of the approach path. Key data points include:

- At 3 NM: Altitude 1500 ft, TCH 40 ft.
- At 1.5 NM: Altitude 1040 ft.
- At 0.9 NM: Altitude 800 ft.
- At 0.68 NM: Altitude 8000 ft x 200 ft.
- At 0.42 NM: Altitude 6402 ft x 200 ft.

CATEGORY	A	B	C	D	E
S-1L *	760-1/2	506 (500-1/2)	760-1	506 (500-1)	
CIRCLING	820-1	840-1	840-1 1/2	880-2	1080-2 3/4
	504 (600-1)	524 (600-1)	524 (600-1 1/2)	564 (600-2)	764 (800-2 3/4)



MERIDIAN, MISSISSIPPI 32°33' N -88°33' W MERIDIAN NAS (MC CAIN FIELD) (KNMM)

Amtd 3 08SEP22

TACAN Y RWY 1L

SC-4, 15 MAY 2025 to 12 JUN 2025

SC-4, 15 MAY 2025 to 12 JUN 2025