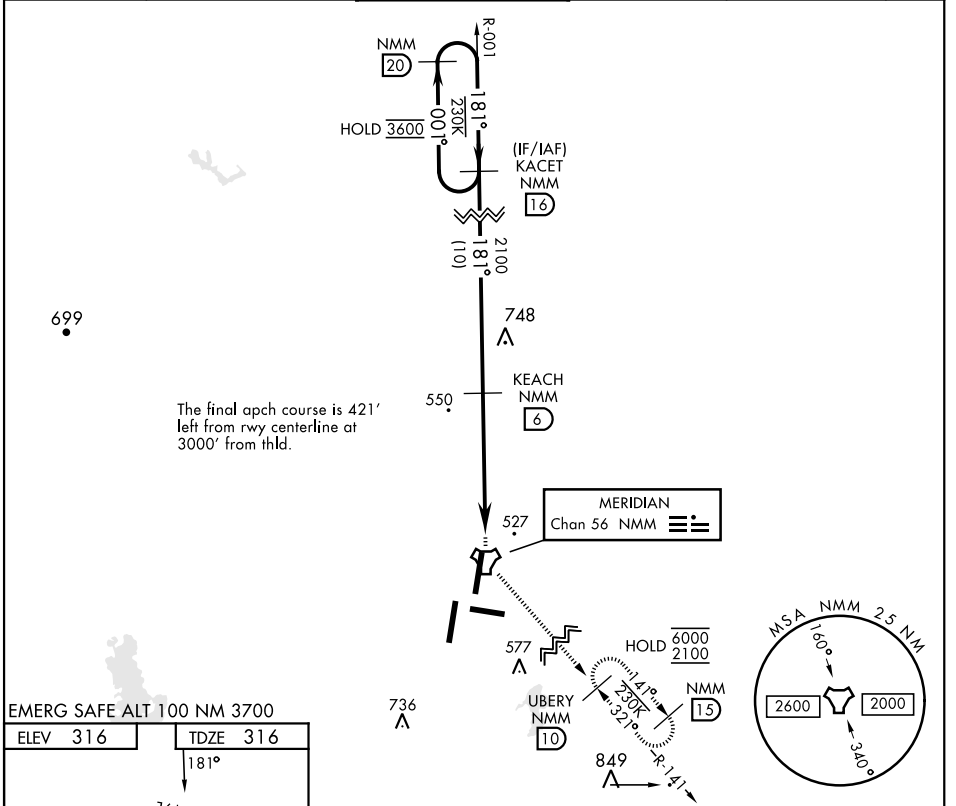


MERIDIAN, MISSISSIPPI

TACAN Y RWY 19L

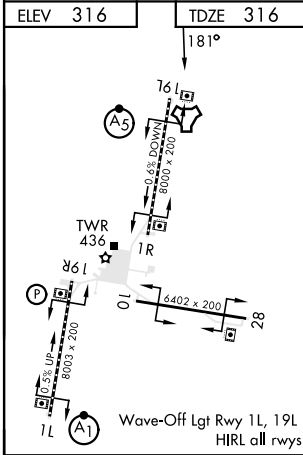
TACAN NMM Chan 56	APCH CRS 181°	Rwy ldg TDZE 316 Arprt Elev 316	AL-5079 [USN]	MERIDIAN NAS (MC CAIN FIELD) (KNMM)
RADAR required.			MALSR	MISSED APPROACH: Climb to 2100 direct NMM TACAN then via R-141 to UBERY and hold.
* When ALS inop, increase CAT AB vis to 1 mile; CDE vis to 1/8 miles.				

ATIS ★ 290.525	APP CON 120.95 276.4	NAVY MC CAIN TOWER ★ 126.2 340.2	GND CON 336.4	CLNC DEL 301.0	ASR/PAR
-----------------------	-----------------------------	---	----------------------	-----------------------	---------



The final apch course is 421' left from rwy centerline at 3000' from thld.

EMERG SAFE ALT 100 NM 3700

TACAN and missed approach details diagram.

KACET NMM 16	2100	NMM	NMM R-141	UBERY NMM 10
3600	181°	181°	2100	TACAN
3600	001°	181°	2100	VERTC 07
			2.83°	TCH 40
			5.3 NM	0.5

CATEGORY	A	B	C	D	E
S-19L *	800-1/2 484	(500-1/2)	800-1 484	(500-1)	
CIRCLING	820-1 504 (600-1)	840-1 524 (600-1)	840-1 1/2 524 (600-1 1/2)	880-2 564 (600-2)	1080-2 3/4 764 (800-2 3/4)

MERIDIAN, MISSISSIPPI 32°33' N -88°33' W MERIDIAN NAS (MC CAIN FIELD) (KNMM)

Amtd 2 08SEP22

TACAN Y RWY 19L

SC-4, 15 MAY 2025 to 12 JUN 2025

SC-4, 15 MAY 2025 to 12 JUN 2025