

MERIDIAN, MISSISSIPPI

ILS Y or LOC/DME Y RWY 19L

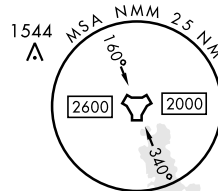
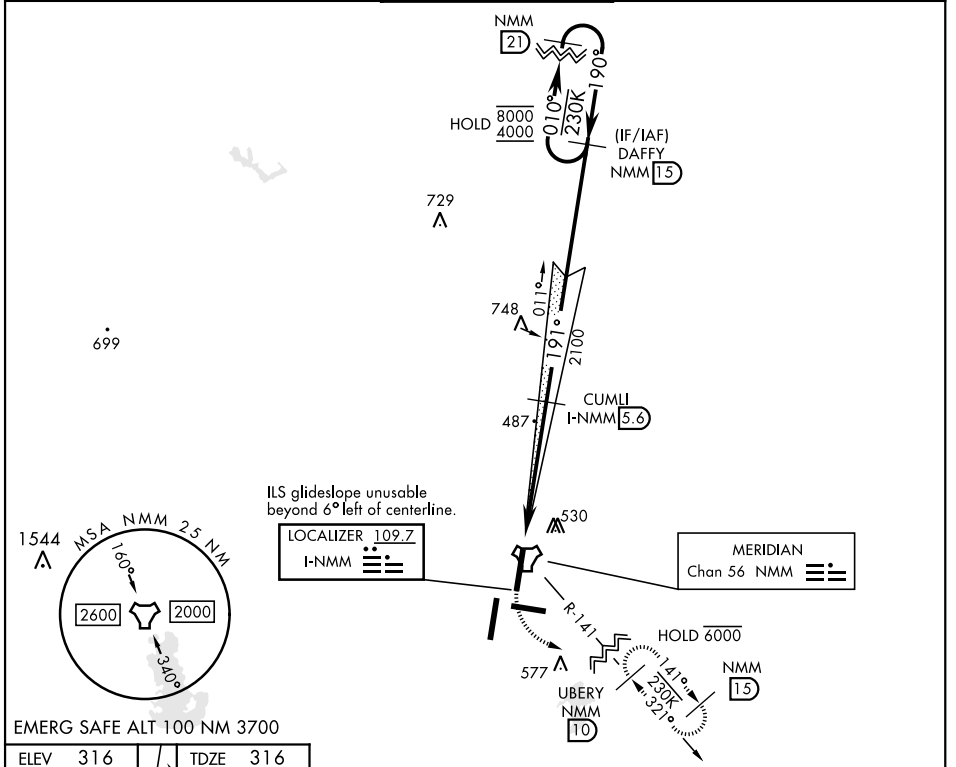
LOC I-NMM 109.7	APCH CRS 191°	Rwy Idg TDZE Arprt Elev 8000 316 316
---------------------------	-------------------------	--

AL-5079 [USN]

MERIDIAN NAS (MC CAIN FIELD) (KNMM)

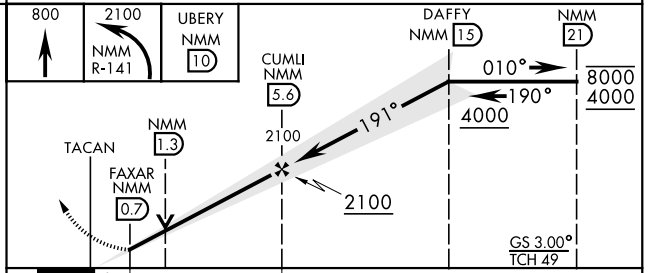
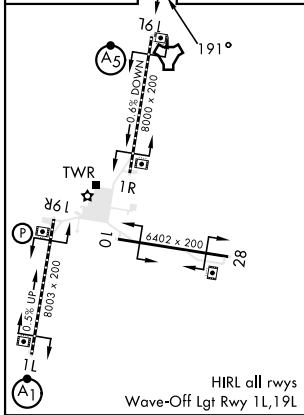
RADAR required. * When ALS inop, increase vis to ¾ mile. ** When ALS inop, increase CAT AB vis to 1 mile, CAT CD vis to 1½ miles.		MALS R 	MISSED APPROACH: Climb to 800, then climbing left turn to 2100 to intercept NMM R-141 to UBERY and hold.		
---	--	------------	--	--	--

ATIS ★ 290.525	APP CON 120.95 276.4	NAVY MC CAIN TOWER ★ 126.2 340.2	GND CON 336.4	CLNC DEL 301.0	ASR/PAR
--------------------------	--------------------------------	--	-------------------------	--------------------------	---------



EMERG SAFE ALT 100 NM 3700

ELEV 316	TDZE 316
----------	----------



CATEGORY	A	B	C	D
S-ILS 19L *	516-½		200	(200-½)
S-LOC 19L **	740-½	424 (500-½)	740-¾	424 (500-¾)
CIRCLING	820-1 504 (600-1)	840-1 524 (600-1)	840-1 ½ 524 (600-1 ½)	880-2 564 (600-2)

MERIDIAN, MISSISSIPPI

32° 33' N-88° 33' W

MERIDIAN NAS (MC CAIN FIELD) (KNMM)

Orig 03NOV22

ILS Y or LOC/DME Y RWY 19L

SC-4, 15 MAY 2025 to 12 JUN 2025

SC-4, 15 MAY 2025 to 12 JUN 2025