

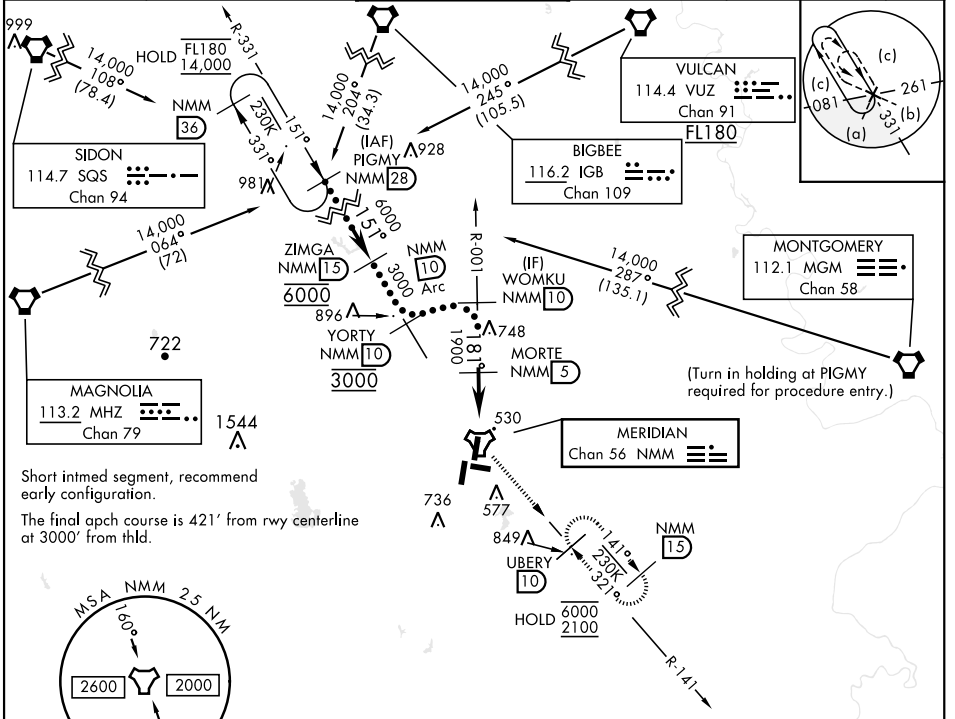
MERIDIAN, MISSISSIPPI

HI-TACAN Z RWY 19L

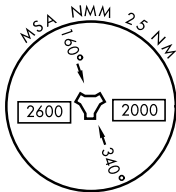
TACAN NMM Chan 56	APCH CRS 181°	Rwy ldg TDZE Arprt Elev 8000 316 316	AL-5079 [USN]	MERIDIAN NAS (MC CAIN FIELD) (KNMM)
-----------------------------	-------------------------	--	---------------	-------------------------------------

DME required.	MALSR (A5)	MISSED APPROACH: Climb to 2100 via NMM R-001 to TACAN then via R-141 to UBERY and hold.
---------------	----------------------	---

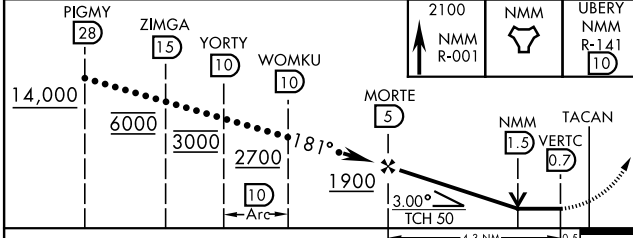
ATIS ★ 290.525	APP CON 120.95 276.4	NAVY MC CAIN TOWER ★ 126.2 340.2	GND CON 336.4	CLNC DEL 301.0	ASR/ PAR
--------------------------	--------------------------------	--	-------------------------	--------------------------	-------------



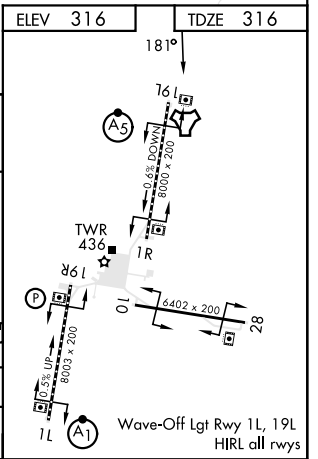
Short inmed segment, recommend early configuration.
 The final apch course is 421' from rwy centerline at 3000' from hld.



EMERG SAFE ALT 100 NM 3700



CATEGORY	C	D	E
S-19L *	780-1	464	(500-1)
CIRCLING	840-1½ 524 (600-1½)	880-2 564 (600-2)	1080-2¾ 764 (800-2¾)



MERIDIAN, MISSISSIPPI 32°33'N -88°33'W MERIDIAN NAS (MC CAIN FIELD) (KNMM)

HI-TACAN Z RWY 19L

SC-4, 15 MAY 2025 to 12 JUN 2025

SC-4, 15 MAY 2025 to 12 JUN 2025