

LOC I-MWC 108.5	APP CRS 148°	Rwy Idg TDZE Apt Elev	4107 745 745
---------------------------	------------------------	-----------------------------	---

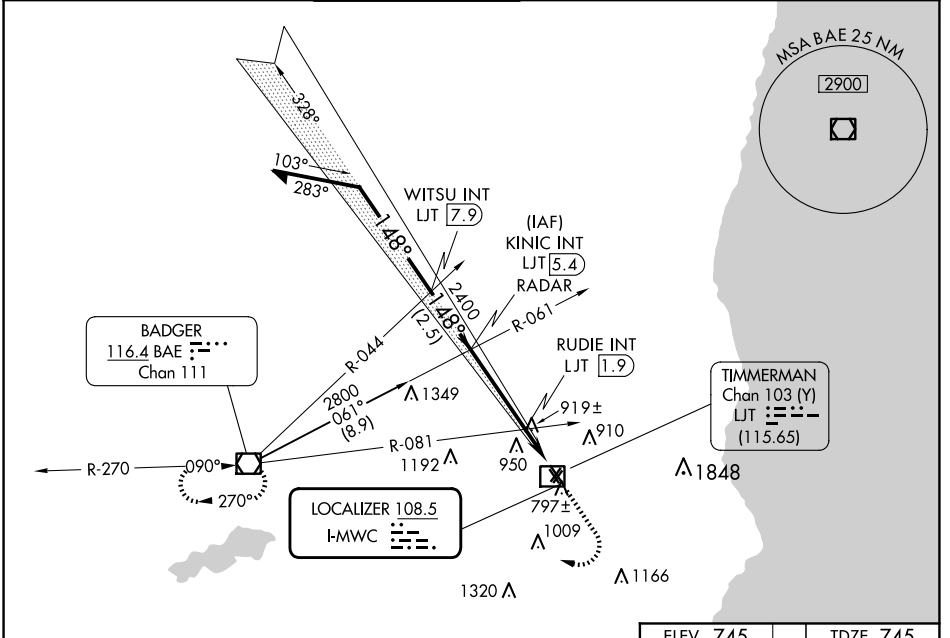
LOC RWY 15L

LAWRENCE J TIMMERMAN (MWC)

⚠ Circling NA to Rwys 4R, 15R, 22L and 33L. Rwy 15L helicopter visibility reduction below 3/4 SM NA. # Simultaneous reception of I-MWC and LJT DME required.

⚠ MISSED APPROACH: Climb to 3000 then right turn direct BAE VOR/DME and hold.

ATIS 128.3	MILWAUKEE APP CON 125.35 307.0	TIMMERMAN TOWER ★ 120.5 (CTAF) ①	GND CON 121.7	CNLC DEL 121.7 (When twr closed)	UNICOM 122.95
----------------------	--	---	-------------------------	---	-------------------------



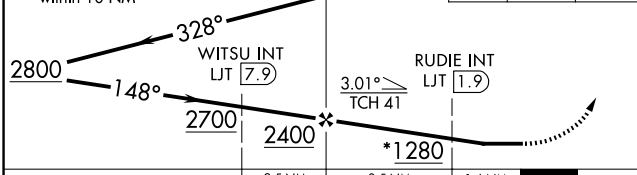
EC-3, 15 MAY 2025 to 12 JUN 2025

EC-3, 15 MAY 2025 to 12 JUN 2025

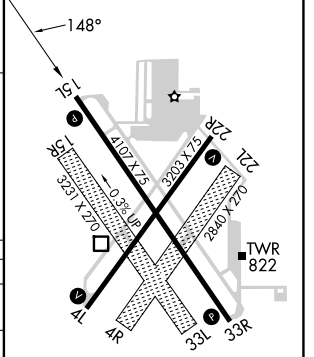
* 1320 when using General Mitchell Intl altimeter setting. Remain within 10 NM

KINIC INT LJT 5.4 RADAR

3000 BAE



ELEV 745	TDZE 745
----------	----------



CATEGORY	A	B	C	D
S-LOC 15L	1280-1	535 (600-1)	1280-1½	535 (600-1½)
CIRCLING	1280-1 535 (600-1)	1340-1 595 (600-1)	1360-1¾ 615 (700-1¾)	1560-2¾ 815 (900-2¾)
RUDIE FIX MINIMUMS (DUAL VOR RECEIVERS OR DME REQUIRED #)				
S-LOC 15L	1180-1	435 (500-1)	1180-1¼	435 (500-1¼)
CIRCLING	1220-1 475 (500-1)	1340-1 595 (600-1)	1360-1¾ 615 (700-1¾)	1560-2¾ 815 (900-2¾)

REIL Rwys 4L, 15L, 22R and 33R ①
MIRL Rwys 4L-22R and 15L-33R ①

FAF to MAP 5.1 NM

Knots	60	90	120	150	180
Min:Sec	5:06	3:24	2:33	2:02	1:42