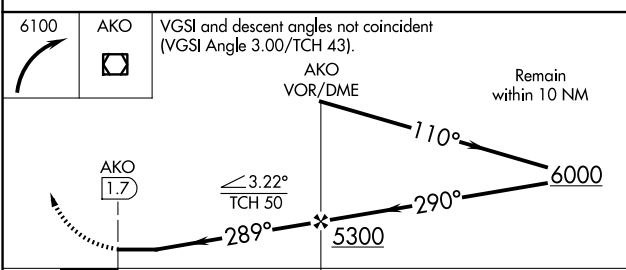
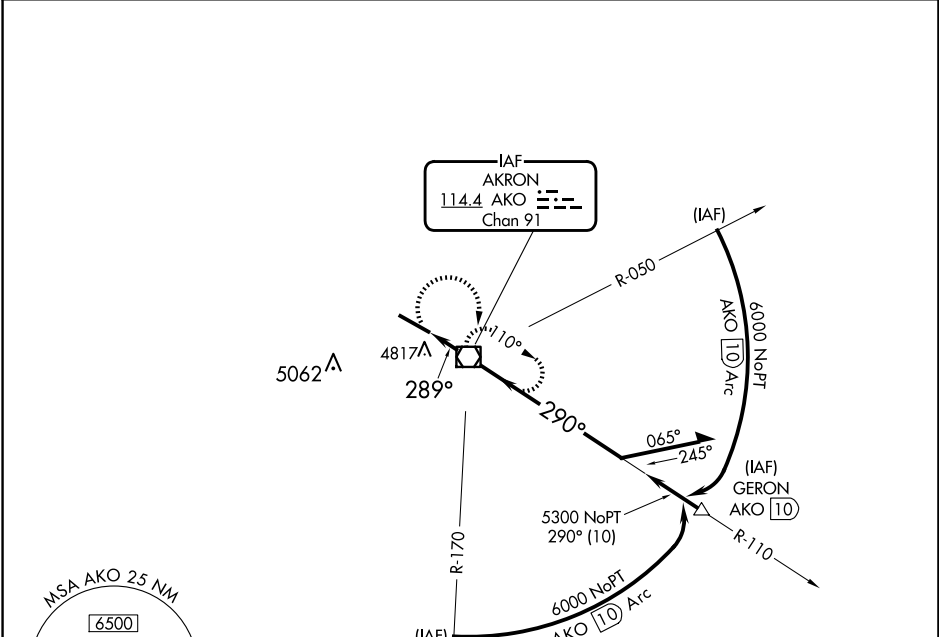


VOR/DME AKO 114.4 Chan 91	APP CRS 289°	Rwy Idg TDZE Apt Elev 7001 4683 4716
--	------------------------	--

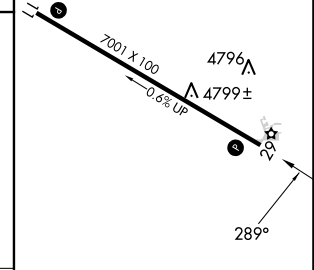
VOR RWY 29
COLORADO PLAINS RGNL (AKO)

⚠ Circling NA for Cats C and D southwest of Rwy 11-29. MISSED APPROACH: Climbing right turn to 6100 direct AKO VOR/DME and hold.

ASOS 135.475	DENVER CENTER 133.95 317.55	UNICOM 122.8 (CTAF) Ⓛ
------------------------	---------------------------------------	--



ELEV 4716	TDZE 4683
-----------	-----------



CATEGORY	A	B	C	D
S-29	5120-1	437 (500-1)	5120-1¼	437 (500-1¼)
CIRCLING	5140-1 424 (500-1)	5260-1 544 (600-1)	5300-1½ 584 (600-1½)	5300-2 584 (600-2)

MIRL Rwy 11-29 Ⓛ					
REIL Rws 11 and 29 Ⓛ					
FAF to MAP 1.7 NM					
Knots	60	90	120	150	180
Min:Sec	1:42	1:08	0:51	0:41	0:34

SW-1, 15 MAY 2025 to 12 JUN 2025

SW-1, 15 MAY 2025 to 12 JUN 2025