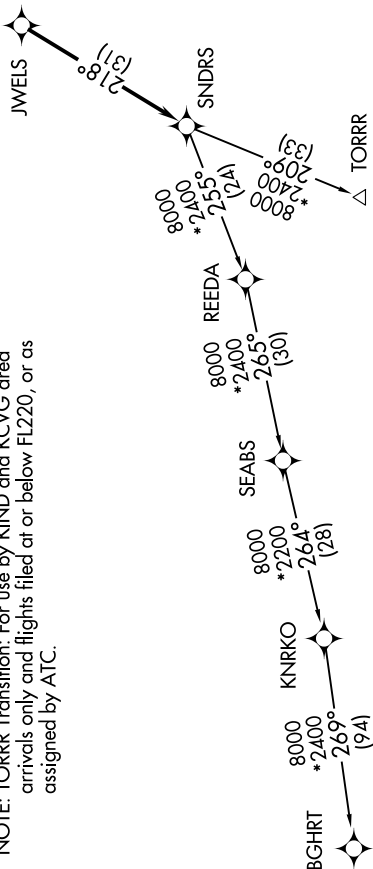


EC-1, 15 MAY 2025 to 12 JUN 2025

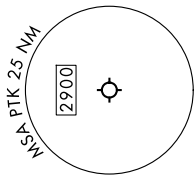
<p>DEPARTURE ROUTE DESCRIPTION</p> <p>TAKEOFF RUNWAYS 9L/R: Climb on heading 095° or as assigned by ATC, thence....</p> <p>TAKEOFF RUNWAYS 27L/R: Climb on heading 275° or as assigned by ATC, thence....</p> <p>....for RADAR vectors to JWELS, then on track 218° to SNDRS, then on (transition). Maintain ATC assigned altitude, expect filed altitude 10 minutes after departure.</p> <p>BGHRT TRANSITION (SNDRS3.BGHRT):</p> <p>TORRR TRANSITION (SNDRS3.TORRR):</p>	<p>TOP ALTITUDE: ASSIGNED BY ATC</p> <p>RNAV-1 DME/DME/IRU or GPS.</p> <p>RADAR required.</p>	<p>DETROIT DEP CON 132.35 284.0</p> <p>ATIS 125.025</p> <p>CLNC DEL 118.25</p> <p>GND CON 121.9</p> <p>PONTIAC TOWER* 120.5 (CTAF)</p>	
	<p>N</p>	<p>← 275° →</p> <p>← 095° →</p>	
	<p>▼</p>		

NOTE: Turbojet departures at/above 10000, maintain 280K until advised by ATC.

NOTE: TORRR Transition: For use by KIND and KCVG area arrivals only and flights filed at or below FL220, or as assigned by ATC.



TAKEOFF MINIMUMS:
Rwys 18, 36: NA - Environmental.
Rwys 9L/R, 27L/R: Standard.



NOTE: Chart not to scale.

EC-1, 15 MAY 2025 to 12 JUN 2025