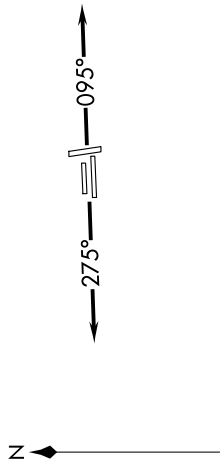


EC-1, 15 MAY 2025 to 12 JUN 2025

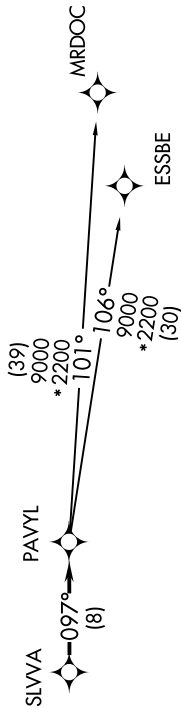
**TOP ALTITUDE:
ASSIGNED BY ATC**

RNAV 1 - DME/DME/IRU or GPS.
RADAR required.

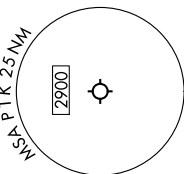


NOTE: Jet departures at/above 10000, maintain 280K until advised by ATC.

- ATIS 125.025
- CLNC DEL 118.25
- GND CON 121.9
- PONTIAC TOWER * 120.5 (CTAF)
- DETROIT DEP CON 132.35 284.0



TAKEOFF MINIMUMS:
Rwys 18, 36: NA - Environmental.
Rwys 9L/R, 27L/R: Standard.



NOTE: Chart not to scale.

DEPARTURE ROUTE DESCRIPTION

TAKEOFF RUNWAYS 9L/R: Climb on heading 095° or as assigned by ATC, thence....
TAKEOFF RUNWAYS 27L/R: Climb on heading 275° or as assigned by ATC, thence....

...for RADAR vectors to SLVVA, then on track 097° to PAVYL, then on (transition). Maintain 17000 or as assigned by ATC, expect filed altitude 10 minutes after departure.

ESSBE TRANSITION (PAVYL3.ESSBE):
MRDOC TRANSITION (PAVYL3.MRDOC):

EC-1, 15 MAY 2025 to 12 JUN 2025