

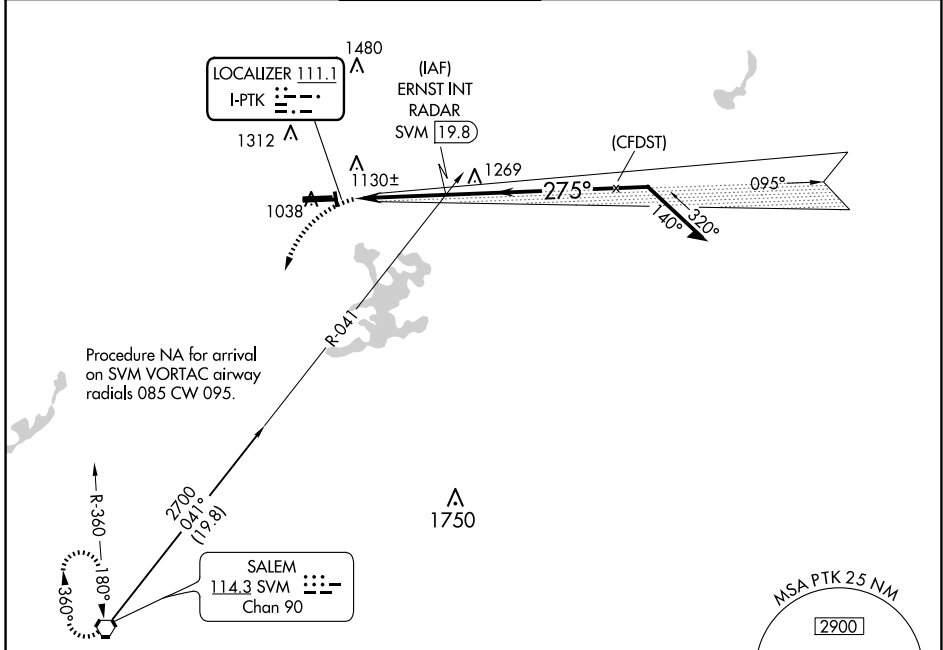
LOC I-PTK 111.1	APP CRS 275°	Rwy Idg 6520
		TDZE 974
		Apt Elev 981

LOC BC RWY 27L
OAKLAND COUNTY INTL (PTK)

⚠ Circling Rwy 9L, 36 NA at night. When local altimeter setting not received, use Coleman A Young Muni altimeter setting and increase all MDA 120 feet, increase S-27L Cat C/D visibility $\frac{3}{8}$ SM and Circling Cat C/D visibility $\frac{1}{2}$ SM.

MISSED APPROACH:
Climbing left turn to 3000 direct SVM VORTAC and hold.

ATIS 125.025	DETROIT APP CON 132.35 284.0	PONTIAC TOWER * 120.5 (CTAF) 0	GND CON 121.9	CLNC DEL 118.25	UNICOM 122.95
------------------------	--	--	-------------------------	---------------------------	-------------------------



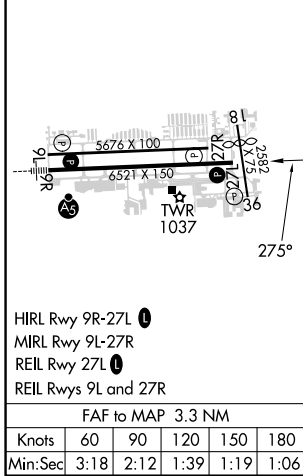
Procedure NA for arrival on SVM VORTAC airway radials 085 CW 095.

EC-1, 15 MAY 2025 to 12 JUN 2025

EC-1, 15 MAY 2025 to 12 JUN 2025

ELEV 981	D	TDZE 974
----------	----------	----------

BACK COURSE



HIRL Rwy 9R-27L **0**
MIRL Rwy 9L-27R
REIL Rwy 27L **0**
REIL Rws 9L and 27R

FAF to MAP 3.3 NM

Knots	60	90	120	150	180
Min:Sec	3:18	2:12	1:39	1:19	1:06

3000	SVM	ERNST INT RADAR				Remain within 10 NM
		I-PTK	2300	275°	2500	095°
		≤ 3.00° TCH 42		Disregard GS indications.		
CATEGORY	A	B	C	D		
S-LOC 27L	1440-1	466 (500-1)	1440-1 $\frac{3}{8}$	466 (500-1 $\frac{3}{8}$)		
C CIRCLING	1500-1	1540-1	1640-1 $\frac{3}{4}$	1640-2		
	519 (600-1)	559 (600-1)	659 (700-1 $\frac{3}{4}$)	659 (700-2)		