

LOC I-CSV <b>109.1</b>	APP CRS <b>255°</b>	Rwy Idg TDZE Apt Elev	<b>5423</b> <b>1871</b> <b>1882</b>
---------------------------	------------------------	-----------------------------	---

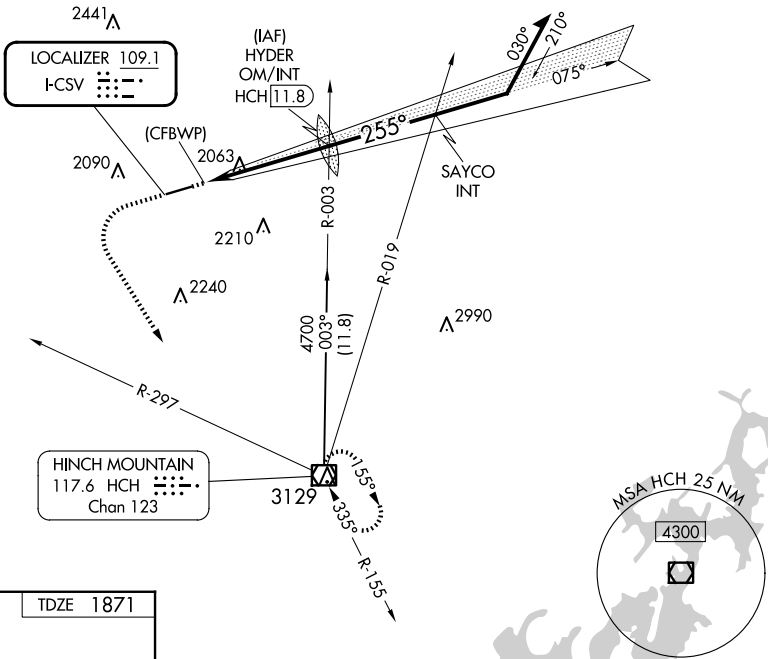
# ILS Z or LOC Z RWY 26

CROSSVILLE MEML-WHITSON FLD (CSV)

**Autopilot coupled approach NA below 2500.**

**MISSED APPROACH:** Climb to 3300 then climbing left turn to 5000 on heading 152° and HCH VOR/DME R-297 to HCH VOR/DME and hold.

ASOS <b>120.625</b>	ATLANTA CENTER <b>133.6 254.3</b>	UNICOM <b>122.7 (CTAF)</b>
------------------------	--------------------------------------	-------------------------------



SE-1, 15 MAY 2025 to 12 JUN 2025

SE-1, 15 MAY 2025 to 12 JUN 2025

ELEV 1882	TDZE 1871
-----------	-----------

REIL Rwy 26  
HIRL Rwy 8-26

FAF to MAP 4.7 NM

Knots	60	90	120	150	180
Min:Sec	4:42	3:08	2:21	1:53	1:34

3300	5000	HCH	HYDER OM/INT	Remain within 10 NM
↑	hdg 152°	HCH R-297	3557	
LOC unusable inside 0.5 NM.				
	(CFBWP)	3600	4100	4100
	0.5	4.7 NM	4 NM	
CATEGORY	A	B	C	D
S-ILS 26	2121- <sup>3</sup> / <sub>4</sub> 250 (300- <sup>3</sup> / <sub>4</sub> )			
S-LOC 26	2440-1	569 (600-1)	2440-1 <sup>5</sup> / <sub>8</sub> 569 (600-1 <sup>5</sup> / <sub>8</sub> )	
<input checked="" type="checkbox"/> CIRCLING	2440-1	558 (600-1)	2440-1 <sup>5</sup> / <sub>8</sub> 558 (600-1 <sup>5</sup> / <sub>8</sub> )	2540-2 658 (700-2)

GS 3.00°  
TCH 60