

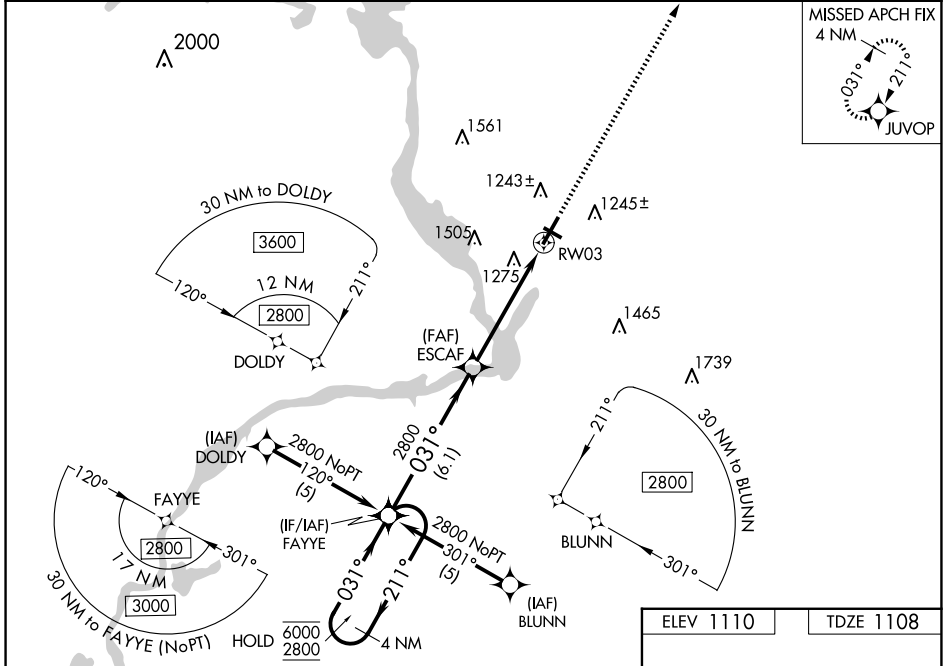
WAAS CH 77910 W03A	APP CRS 031°	Rwy Idg TDZE Apt Elev	6028 1108 1110
--	------------------------	-----------------------------	---

RNAV (GPS) RWY 3

STEVENS POINT MUNI (STE)

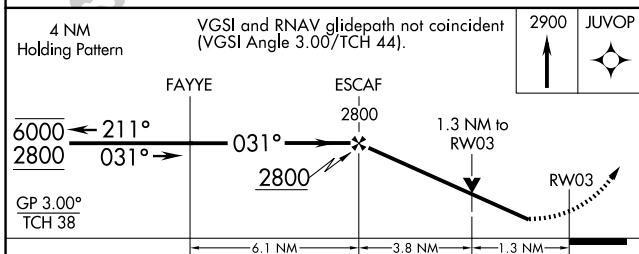
RNP APCH - GPS.	MISSED APPROACH: Climb to 2900 direct JUVOP and hold.
<p>▼ Rwy 3 helicopter visibility reduction below 3/4 SM NA.</p> <p>▲ For uncompensated Baro-VNAV systems, LNAV/VNAV NA below -17° C or above 54°C.</p>	

AWOS-3 119.275	MINNEAPOLIS CENTER 124.4 317.7	UNICOM 122.7 (CTAF)
--------------------------	--	-------------------------------



EC-3, 15 MAY 2025 to 12 JUN 2025

EC-3, 15 MAY 2025 to 12 JUN 2025



CATEGORY	A	B	C	D
LPV DA		1409-7/8	301 (300-7%)	
LNAV/VNAV DA		1594-13/8	486 (500-1%)	
LNAV MDA	1540-1	432 (500-1)	1540-1 1/4	432 (500-1 1/4)
C CIRCLING	1580-1 470 (500-1)	1600-1 490 (500-1)	1860-2 1/4 750 (800-2 1/4)	1860-2 1/2 750 (800-2 1/2)

