

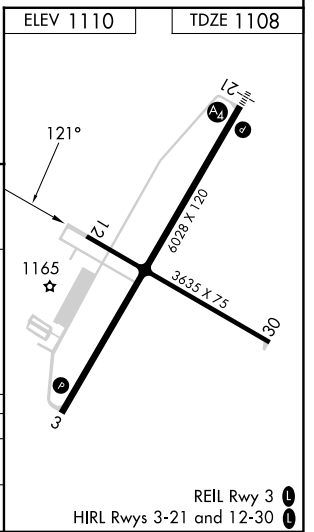
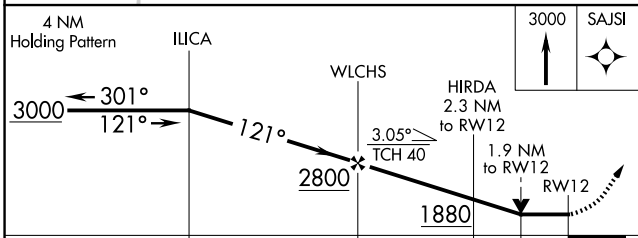
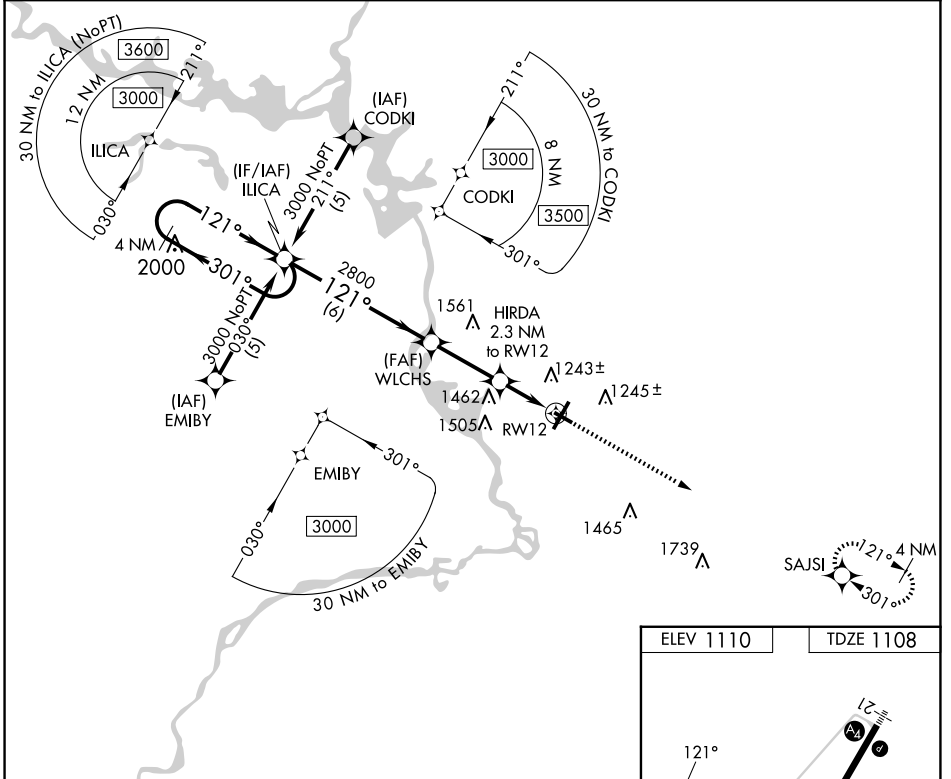
APP CRS	Rwy Idg	3635
121°	TDZE	1108
	Apt Elev	1110

RNAV (GPS) RWY 12

STEVENS POINT MUNI (STE)

RNP APCH - GPS.		MISSED APPROACH: Climb to 3000 direct SAJSI and hold.
<p>⚠ Rwy 12 helicopter visibility reduction below 3/4 SM NA. When local altimeter not received, use Mosinee altimeter setting and increase all MDA 60 feet, increase LNAV Cat C and D visibility 1/8 SM. VDP NA when using Mosinee altimeter setting.</p>		

AWOS-3 119.275	MINNEAPOLIS CENTER 124.4 317.7	UNICOM 122.7 (CTAF) 0
--------------------------	--	---------------------------------



CATEGORY	A	B	C	D
LNVA MDA	1760-1	652 (700-1)	1760-1 7/8	652 (700-1 7/8)
C CIRCLING	1760-1	650 (700-1)	1860-2 1/4 750 (800-2 1/4)	1860-2 1/2 750 (800-2 1/2)

EC-3, 15 MAY 2025 to 12 JUN 2025

EC-3, 15 MAY 2025 to 12 JUN 2025

REIL Rwy 3 0
HIRL Rwy 3-21 and 12-30 0