

WAAS CH <b>69621</b> <b>W03A</b>	APP CRS <b>027°</b>	Rwy Idg TDZE Apt Elev	<b>7300</b> <b>1317</b> <b>1317</b>
--	------------------------	-----------------------------	---

# RNAV (GPS) RWY 3

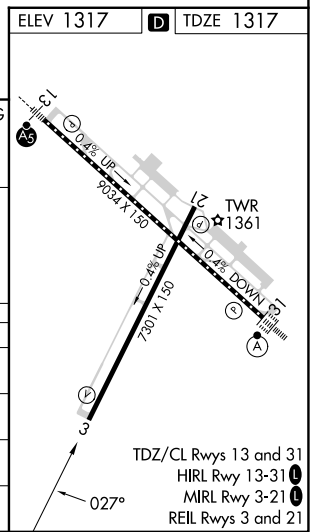
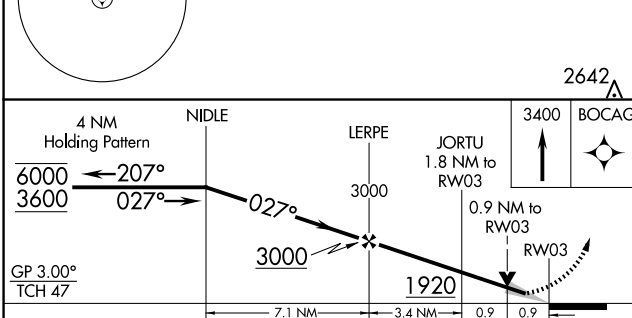
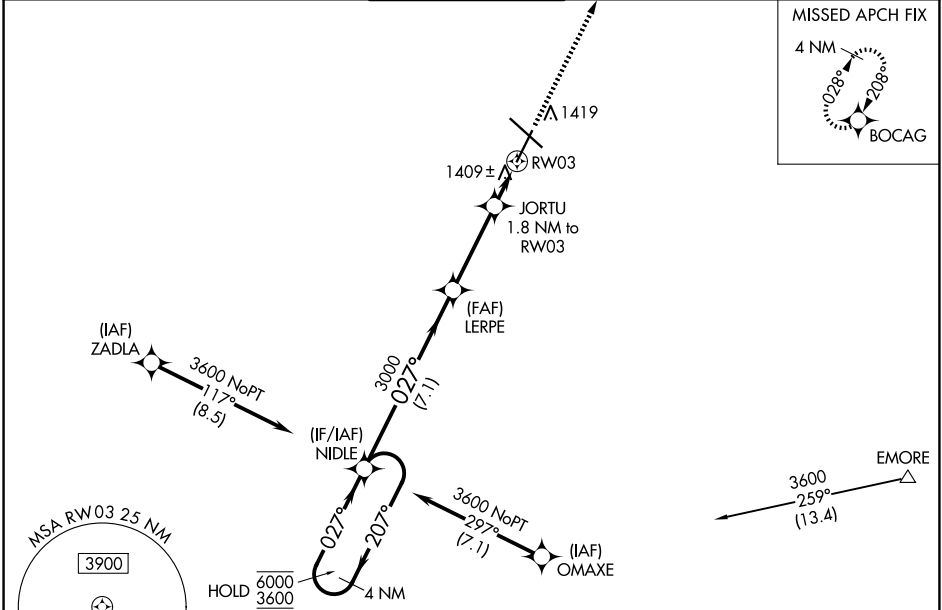
ROCHESTER INTL (RST)

RNP APCH - GPS.

ASR For uncompensated Baro-VNAV systems, LNAV/VNAV NA below -28°C or above 54°C.

MISSED APPROACH: Climb to 3400 direct BOCAG and hold, continue climb-in-hold to 4800.

ATIS <b>120.5</b>	ROCHESTER APP CON * <b>119.8 251.125</b>	ROCHESTER TOWER * <b>118.3 (CTAF) 257.8</b>	GND CON <b>121.9</b>	UNICOM <b>122.95</b>
----------------------	---	--	-------------------------	-------------------------



CATEGORY	A	B	C	D
LPV DA		1567-1	250 (300-1)	
LNAV/VNAV DA		1592-1	275 (300-1)	
LNAV MDA		1660-1	343 (400-1)	
<b>CIRCLING</b>	1720-1 403 (500-1)	1780-1 463 (500-1)	1900-1½ 583 (600-1½)	1900-2 583 (600-2)

NC-1, 15 MAY 2025 to 12 JUN 2025

NC-1, 15 MAY 2025 to 12 JUN 2025