

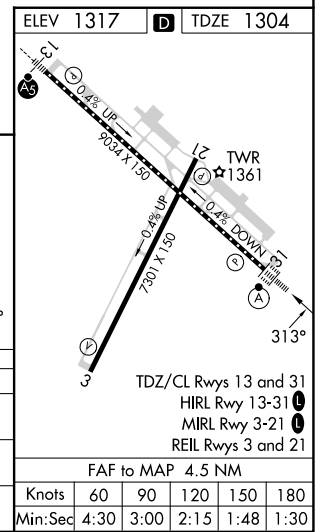
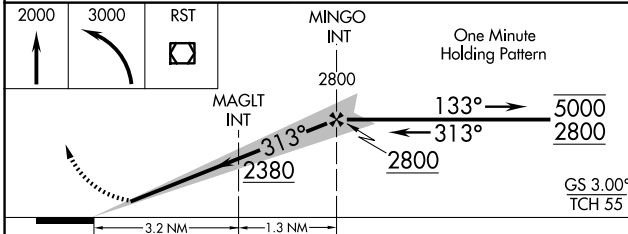
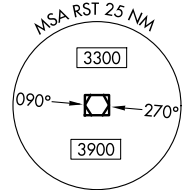
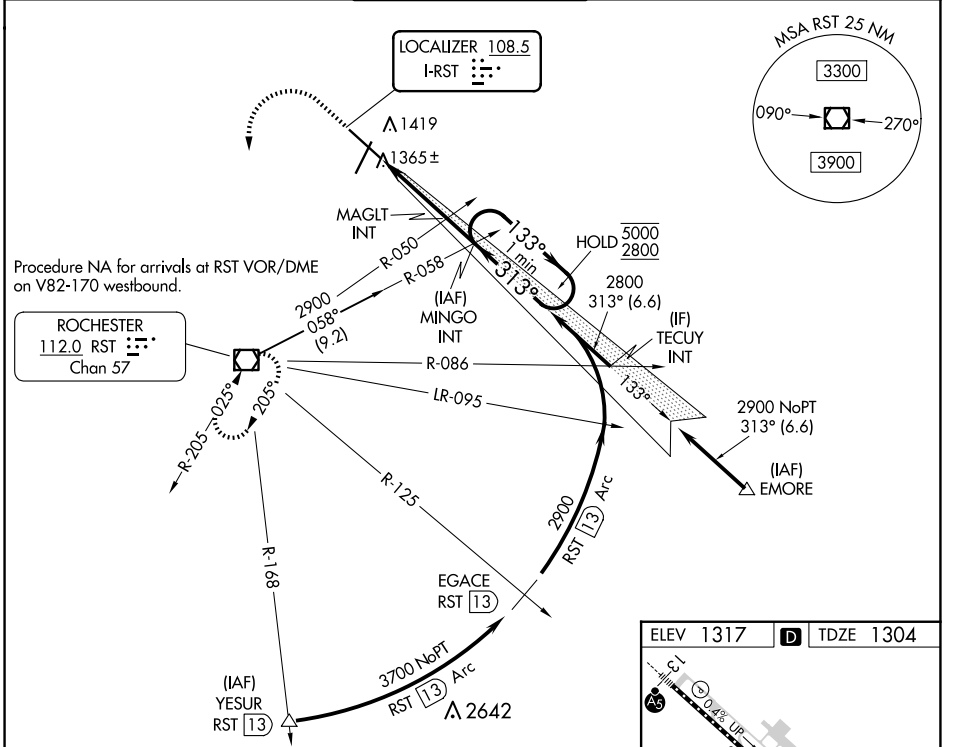
LOC I-RST <b>108.5</b>	APP CRS <b>313°</b>	Rwy Idg TDZE Apt Elev	<b>9033</b> <b>1304</b> <b>1317</b>
---------------------------	------------------------	-----------------------------	---

# ILS Z or LOC Z RWY 31

ROCHESTER INTL (RST)

DME required for procedure entry at YESUR.		ALSIF-2	MISSED APPROACH: Climb to 2000 then climbing left turn to 3000 direct RST VOR/DME and hold.	
ASR For inop ALS, increase S-LOC 31 Cat C/D visibility to RVR 4500.				

ATIS <b>120.5</b>	ROCHESTER APP CON* <b>119.8 251.125</b>	ROCHESTER TOWER* <b>118.3 (CTAF) 257.8</b>	GND CON <b>121.9</b>	UNICOM <b>122.95</b>
----------------------	--	---	-------------------------	-------------------------



CATEGORY	A	B	C	D
S-ILS 31		1504/18	200 (200-½)	
S-LOC 31		1620/24	316 (400-½)	
<b>C</b> CIRCLING	1720-1 403 (500-1)	1780-1 463 (500-1)	1900-1½ 583 (600-½)	1900-2 583 (600-2)

NC-1, 15 MAY 2025 to 12 JUN 2025

NC-1, 15 MAY 2025 to 12 JUN 2025