

WAAS CH <b>97515</b> <b>W13A</b>	APP CRS <b>132°</b>	Rwy Idg TDZE Apt Elev	<b>7510</b> <b>46</b> <b>46</b>
--	------------------------	-----------------------------	---------------------------------------

# RNAV (GPS) Y RWY 13

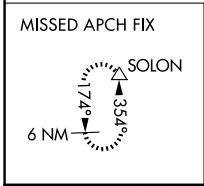
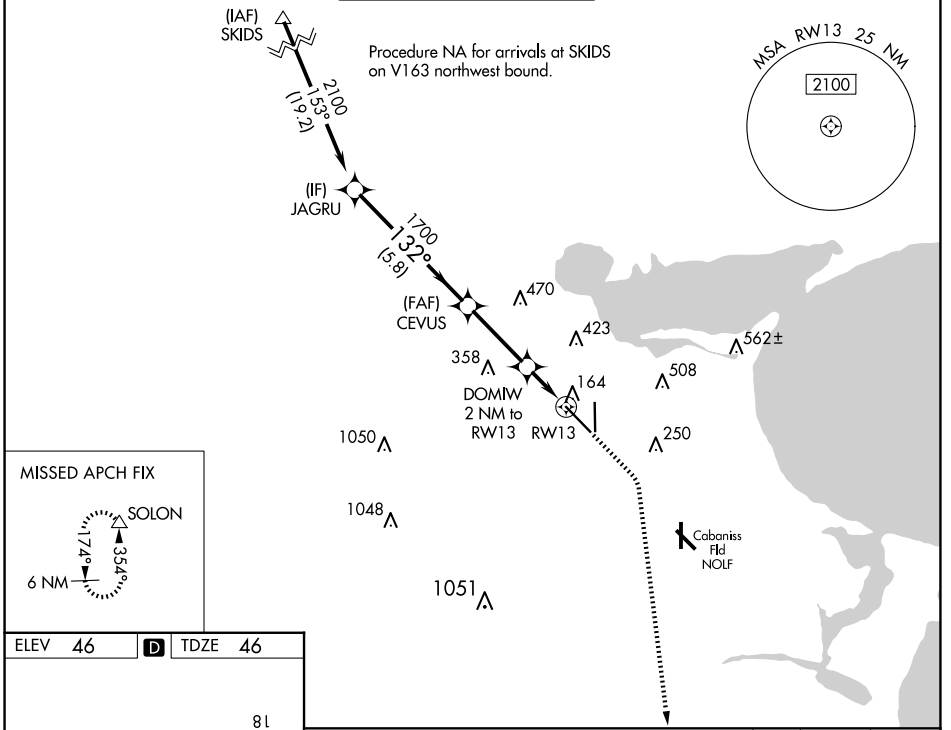
CORPUS CHRISTI INTL (CRP)

RNP APCH - GPS.

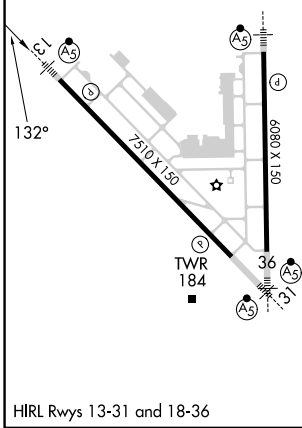
⚠ For uncompensated Baro-VNAV systems, LNAV/VNAV NA below -1°C or above 54°C. For inop ALS increase LPV Cat E visibility to RVR 4000, LNAV/VNAV all Cats visibility to RVR 4500, and LNAV Cats C, D, and E visibility to RVR 5500. \*RVR 1800 authorized with use of FD or AP or HUD to DA.

MALSR 	MISSED APPROACH: Climb to 500 then climbing right turn to 2000 direct SOLON and hold.
-----------	---

ATIS <b>126.8</b>	CORPUS APP CON <b>120.9 348.725</b>	CORPUS TOWER <b>119.4 257.8</b>	GND CON <b>121.9 269.15</b>	CLNC DEL <b>118.55</b>
----------------------	--	------------------------------------	--------------------------------	---------------------------



ELEV 46	<b>D</b>	TDZE 46
---------	----------	---------



	JAGRU	CEVUS	DOMIW 2 NM to RW13	1 NM to RW13	RW13
	2100	1700	720		
	132°				
	5.8 NM	3 NM	1 NM	1 NM	
CATEGORY	A	B	C	D	E
LPV DA *	246/24		200 (200-½)		
LNAV/VNAV DA	325/24		279 (300-½)		
LNAV MDA	420/24 374 (400-½)		420/35 374 (400-¾)		
<b>C</b> CIRCLING	500-1 454 (500-1)	780-1 734 (800-1)	820-2¼ 774 (800-2¼)	820-2½ 774 (800-2½)	820-2¾ 774 (800-2¾)

SC-3, 15 MAY 2025 to 12 JUN 2025

SC-3, 15 MAY 2025 to 12 JUN 2025