

LAMPS EIGHT DEPARTURE

CLNC DEL
225.4
GND CON
133.85 225.4
HOOD TOWER★
119.65 269.45
GRAY DEP CON
120.075 323.15

RADAR required.

**TOP ALTITUDE:
ASSIGNED BY ATC**

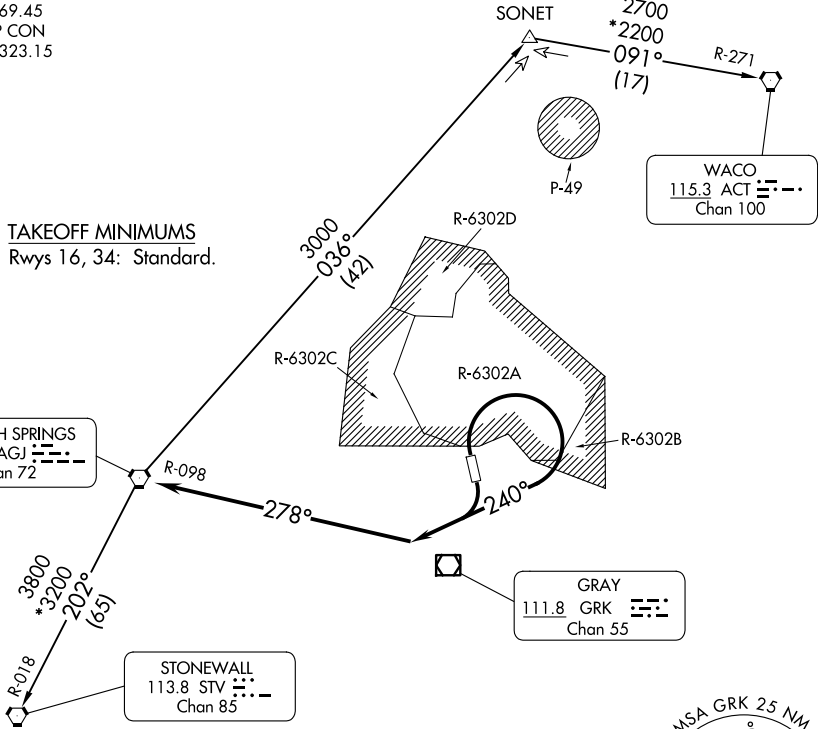
TAKEOFF MINIMUMS
Rwys 16, 34: Standard.

GOOCH SPRINGS
112.5 AGJ
Chan 72

STONEWALL
113.8 STV
Chan 85

GRAY
111.8 GRK
Chan 55

WACO
115.3 ACT
Chan 100



NOTE: WACO TRANSITION for aircraft inbound to terminal area airports.

NOTE: Chart not to scale.

DEPARTURE ROUTE DESCRIPTION

TAKEOFF RUNWAYS 16, 34: Climbing right turn heading 240° (to assigned altitude) to intercept and proceed on AGJ R-098. Thence . . .

. . . on (transition) or (assigned route). Maintain ATC assigned altitude.

STONEWALL TRANSITION (LAMPS8.STV): From over AGJ VORTAC on AGJ R-202 and STV R-018 to STV VORTAC.

WACO TRANSITION (LAMPS8.ACT): From over AGJ VORTAC on AGJ R-036 to SONET INT, then on ACT R-271 to ACT VORTAC.