

FORT CAVAZOS, TEXAS

COPTER RNAV (GPS) RWY 34

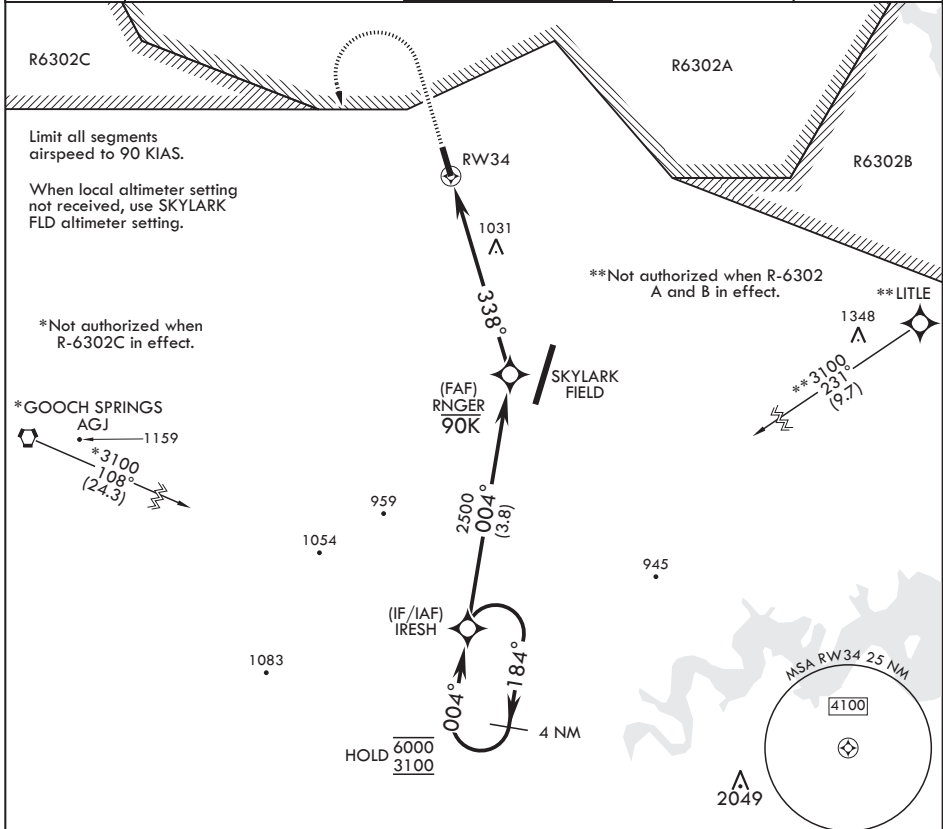
APCH CRS	Rwy Idg	2676
338°	TDZE	910
	Arprt Elev	910

AL-5031 (USA)

YOAKUM DEFRENN AHP (KHLR)

RNP APCH – GPS	MISSED APPROACH: Climb to 1500 then climbing left turn to 3100 direct IRESH and hold.
RADAR required for missed approach.	
NA	

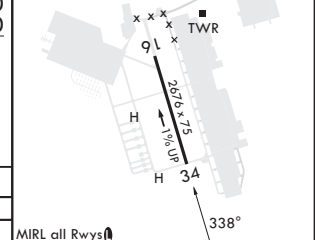
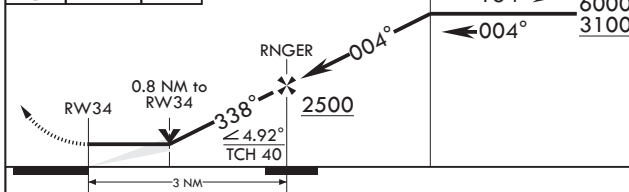
ATIS * 138.6	GRAY APP CON/DEP CON 120.075 323.15	TOWER * 119.65 @ 269.45	GND CON 133.85 225.4	CLNC DEL 225.4
-----------------	--	----------------------------	-------------------------	-------------------



SC-3, 15 MAY 2025 to 12 JUN 2025

SC-3, 15 MAY 2025 to 12 JUN 2025

1500	3100	IRESH	No turn before RW34	4 NM Holding Pattern	ELEV 910	TDZE 910
------	------	-------	---------------------	----------------------	----------	----------



CATEGORY	COPTER			MIRL all Rwy's
LNAV MDA	1320-1	410	(500-1)	

FORT CAVAZOS, TEXAS

31°08'N - 97°43'W

YOAKUM DEFRENN AHP (KHLR)

Amdt 1 05OCT23

COPTER RNAV (GPS) RWY 34