

COPTER NDB RWY 34

LOM IL 278	APCH CRS 353°	Rwy ldg TDZE Arprt Elev 2676 910 910
----------------------	-------------------------	---

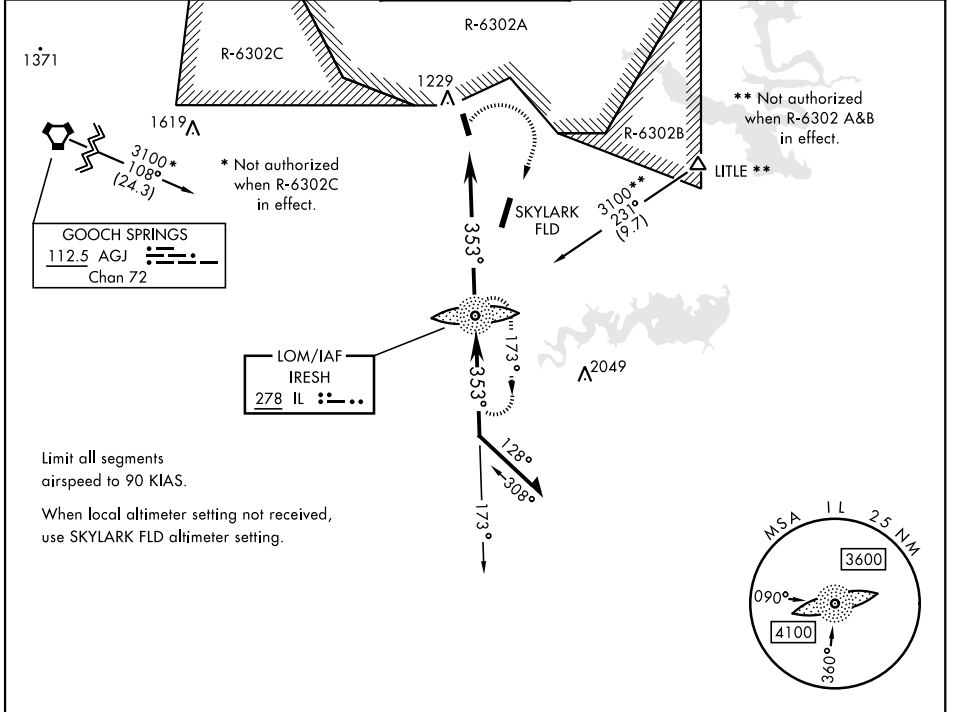
AL-5031 [USA]

YOAKUM DEFRENN AHP (KHLR)

RADAR required for missed approach.

MISSED APPROACH: Climbing right turn to 3100 direct IL LOM and hold.

ATIS★ 138.6	GRAY APP CON 120.075 323.15	TOWER★ 119.650 269.45	GND CON 133.85 225.4	CLNC DEL 225.4
-----------------------	---------------------------------------	---------------------------------	--------------------------------	--------------------------

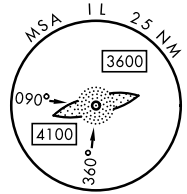


GOOCH SPRINGS
112.5 AGJ
Chan 72

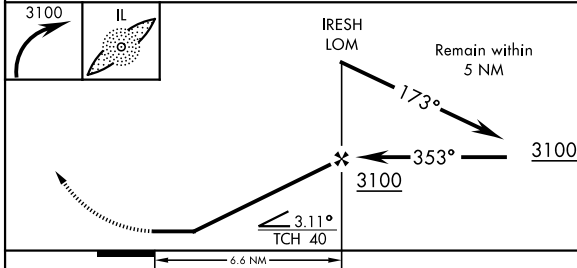
LOM/IAF
IRESH
278 IL

Limit all segments
airspeed to 90 KIAS.

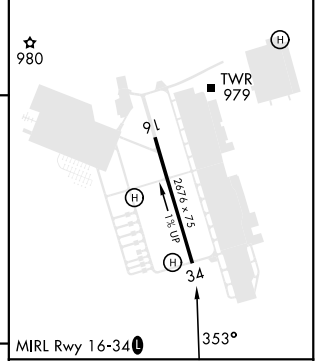
When local altimeter setting not received,
use SKYLARK FLD altimeter setting.



3097
A



ELEV 910	TDZE 910
----------	----------



MIRL Rwy 16-34	FAF to MAP 6.6 NM					
Category	Knots	45	60	75	90	105
Min:Sec	8:48	6:36	5:17	4:24	3:46	

COPTER NDB RWY 34

SC-3, 15 MAY 2025 to 12 JUN 2025

SC-3, 15 MAY 2025 to 12 JUN 2025