

CONRA THREE DEPARTURE

SC-3, 15 MAY 2025 to 12 JUN 2025

TOP ALTITUDE:
3500

RADAR required.

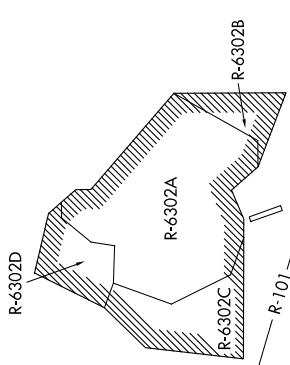
DEPARTURE ROUTE DESCRIPTION

TAKEOFF RUNWAYS 16, 34: Climb on assigned heading for RADAR vectors to CONRA INT, maintain 3500. Thence (transition), expect filed altitude 10 minutes after departure.

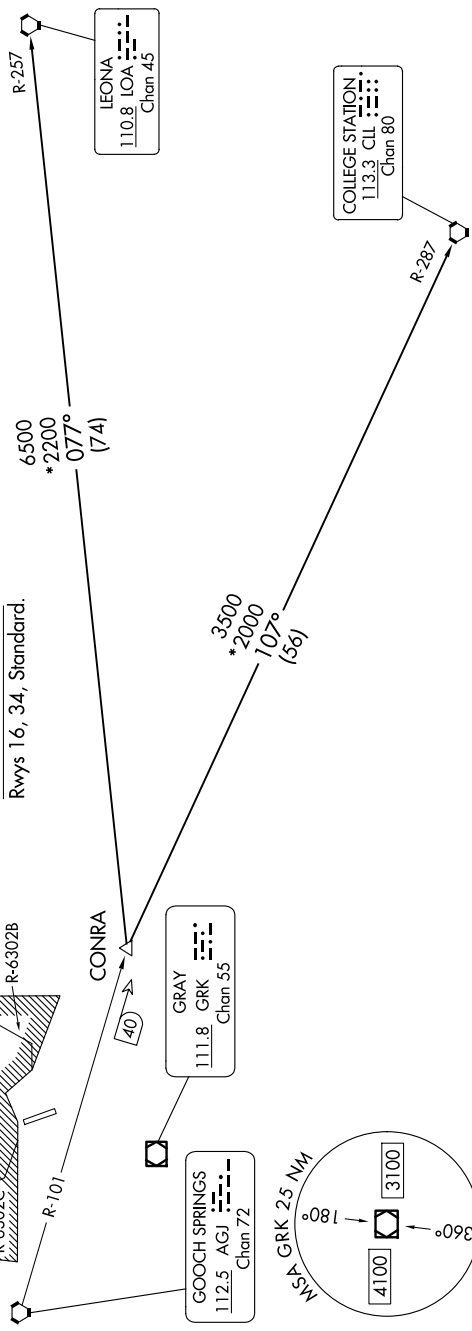
COLLEGE STATION TRANSITION (CONRA3.CLL): From over CONRA INT on CLL R-287 to CLL VORTAC.

LEONA TRANSITION (CONRA3.LOA): From over CONRA INT on LOA R-257 to LOA VORTAC.

CINC DEL 225.4
 GND CON 133.85 225.4
 HOOD TOWER* 119.65 269.45
 GRAY DEP CON 120.075 323.15



TAKE-OFF MINIMUMS
 Rwys 16, 34, Standard.



NOTE: Chart not to scale.

SC-3, 15 MAY 2025 to 12 JUN 2025