

APP CRS	Rwy Idg	3725
300°	TDZE	644
	Apt Elev	647

RNAV (GPS) RWY 30

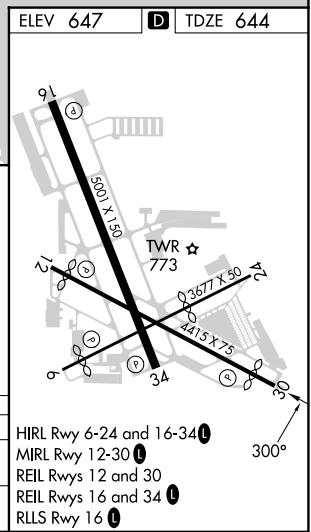
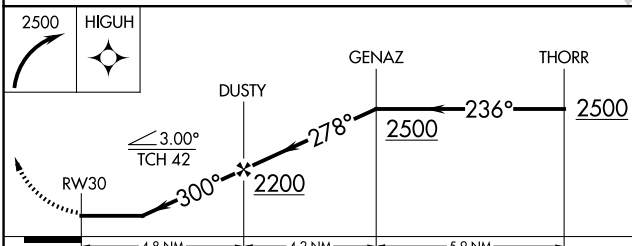
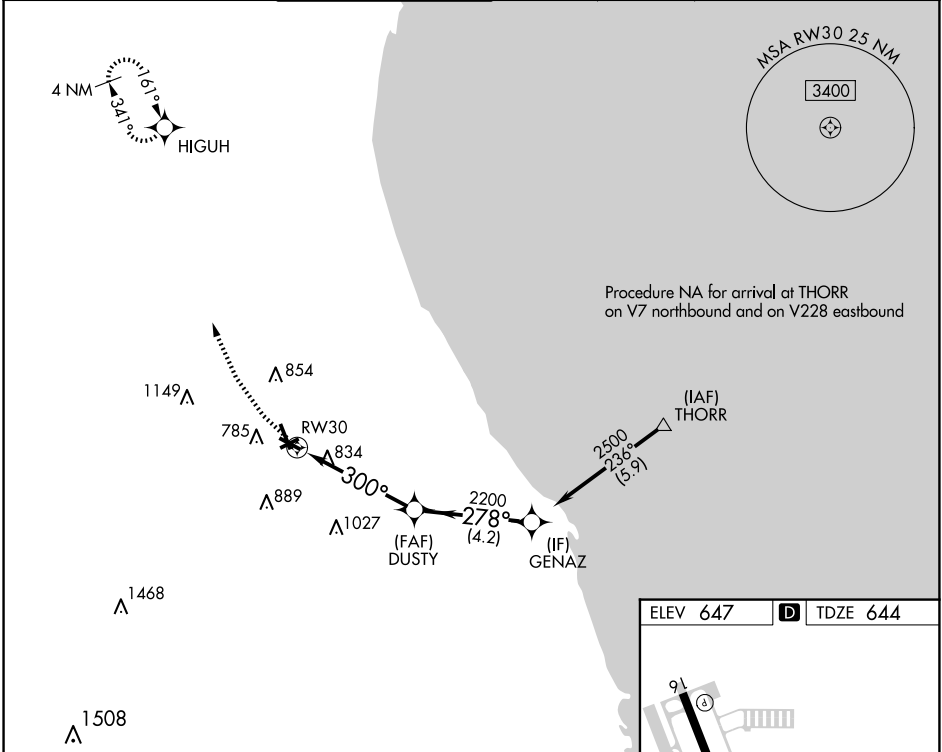
CHICAGO EXEC (PWK)

RNP APCH - GPS.

- ▽** Circling Rwy 6, 12, 24, 30 NA at night.
- ▲** Rwy 30 Straight-in procedure NA at night.
- Rwy 30 helicopter visibility reduction below 1 SM NA.

MISSED APPROACH: Climbing right turn to 2500 direct HIGUH and hold.

ATIS 124.2	CHICAGO APP CON 120.55 306.925	EXECUTIVE TOWER ★ 119.9 (CTAF) 0	GND CON 121.7	CLNC DEL 124.7	CLNC DEL 124.7 (When twr closed)	UNICOM 122.95
----------------------	--	--	-------------------------	--------------------------	---	-------------------------



CATEGORY	A	B	C	D
LNNAV MDA	1120-1	476 (500-1)	1120-1 ³ / ₈	476 (500-1 ³ / ₈)
CIRCLING	1140-1 493 (500-1)	1160-1 513 (600-1)	1200-1 ¹ / ₂ 553 (600-1 ¹ / ₂)	1460-2 ³ / ₄ 813 (900-2 ³ / ₄)

EC-3, 15 MAY 2025 to 12 JUN 2025

EC-3, 15 MAY 2025 to 12 JUN 2025