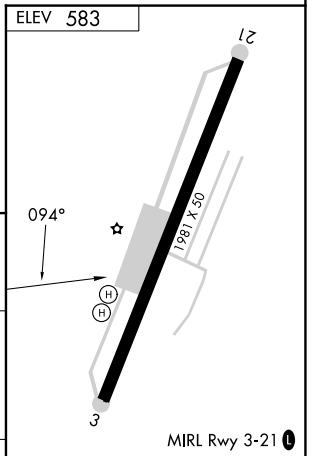
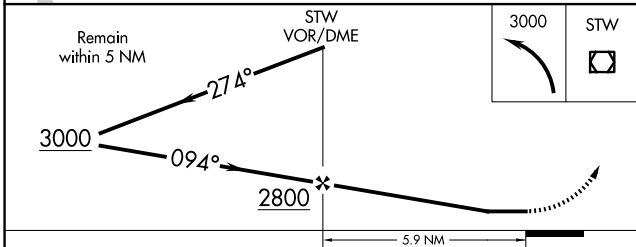
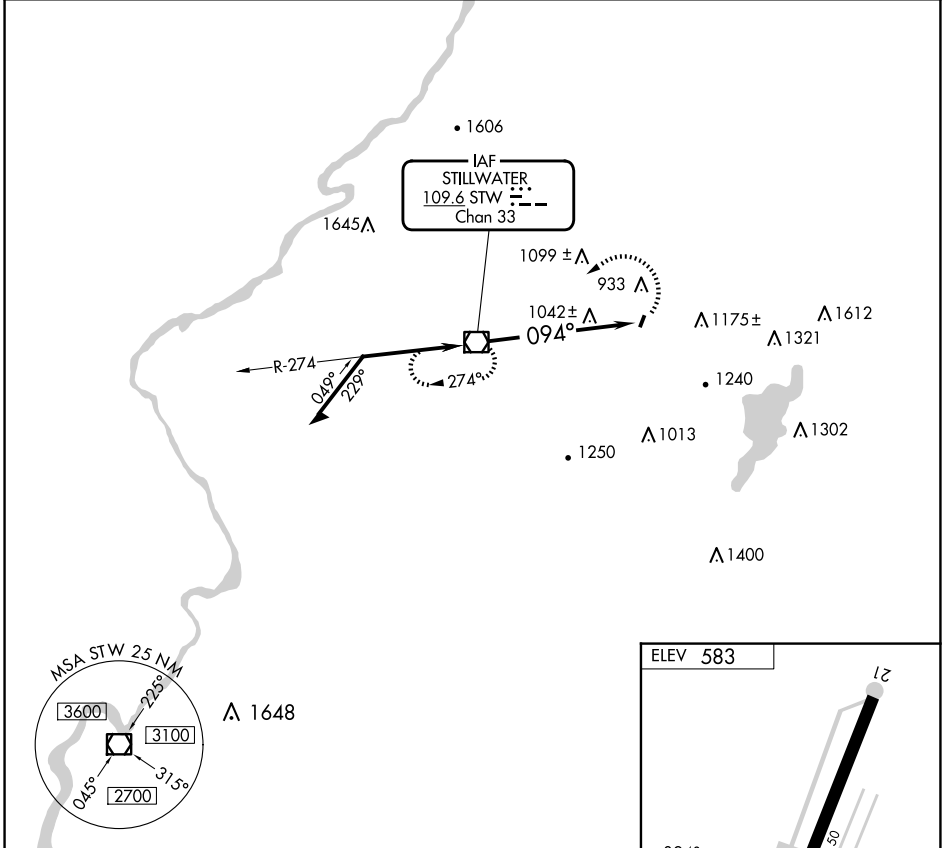


VOR/DME STW 109.6 Chan 33	APP CRS 094°	Rwy Idg TDZE Apt Elev	1981 N/A 583
---	------------------------	-----------------------------	---

VOR-A
AEROFLEX/ANDOVER (12N)

▼ When local altimeter setting not received, use Caldwell altimeter setting and increase MDA 120 feet. Procedure NA at night.
▲ MISSED APPROACH: Climbing left turn to 3000 direct STW VOR/DME and hold.

NEWARK APP CON 127.6 379.9	UNICOM 122.8 (CTAF)
--------------------------------------	-------------------------------



CATEGORY	A	B	C	D	FAF to MAP 5.9 NM												
C CIRCLING	1560-1¼ 977 (1000-1¼)		NA		<table border="1"> <tr> <td>Knots</td> <td>60</td> <td>90</td> <td>120</td> <td>150</td> <td>180</td> </tr> <tr> <td>Min:Sec</td> <td>5:54</td> <td>3:56</td> <td>2:57</td> <td>2:22</td> <td>1:58</td> </tr> </table>	Knots	60	90	120	150	180	Min:Sec	5:54	3:56	2:57	2:22	1:58
Knots	60	90	120	150	180												
Min:Sec	5:54	3:56	2:57	2:22	1:58												

NE-2, 15 MAY 2025 to 12 JUN 2025

NE-2, 15 MAY 2025 to 12 JUN 2025