

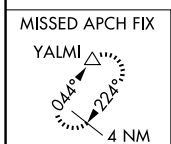
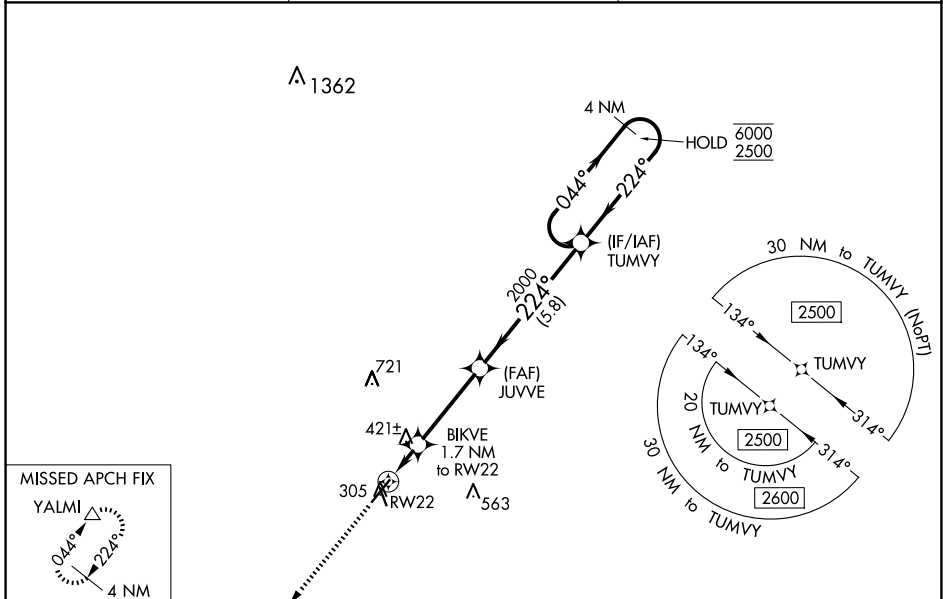
WAAS CH 93803 W22A	APP CRS 224°	Rwy Idg TDZE Apt Elev	5628 296 297
--	------------------------	-----------------------------	---

RNAV (GPS) RWY 22

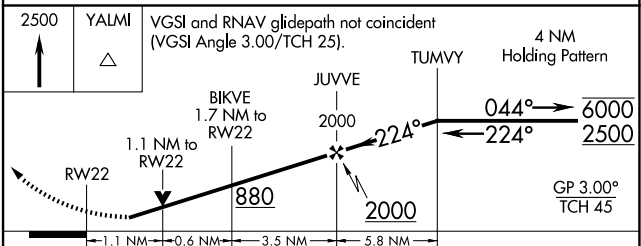
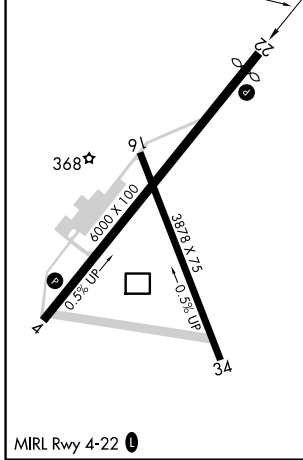
MOULTRIE MUNI (MGR)

RNP APCH - GPS.		MISSED APPROACH: Climb to 2500 direct YALMI and hold.
<p>▼ Rwy 22 helicopter visibility reduction below 3/4 SM NA. Circling Rwy 16, 34 NA at night. ▲ For uncompensated Baro-VNAV systems, LNAV/VNAV NA below -15°C or above 54°C.</p>		

AWOS-3PT 118.925	VALDOSTA APP CON ★ 126.6 285.6	UNICOM 122.8 (CTAF) 0
----------------------------	--	---------------------------------



ELEV 297	D	TDZE 296
----------	----------	----------



CATEGORY	A	B	C	D
LPV DA		600-1	304 (400-1)	
LNAV/VNAV DA		569-1	273 (300-1)	
LNAV MDA	680-1	384 (400-1)	680-1 1/8	384 (400-1 1/8)
C CIRCLING	720-1 423 (500-1)	760-1 463 (500-1)	860-1 1/2 563 (600-1 1/2)	1080-2 1/2 783 (800-2 1/2)

SE-4, 15 MAY 2025 to 12 JUN 2025

SE-4, 15 MAY 2025 to 12 JUN 2025