

LOC/DME I-HWID 111.5	APP CRS 288°	Rwy Idg TDZE Apt Elev	5018 50 52
Chan 52			

LOC RWY 28L

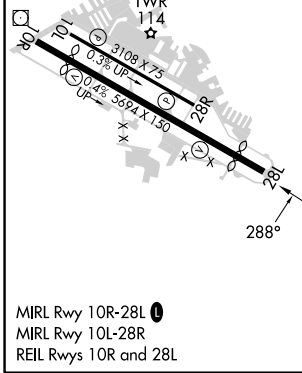
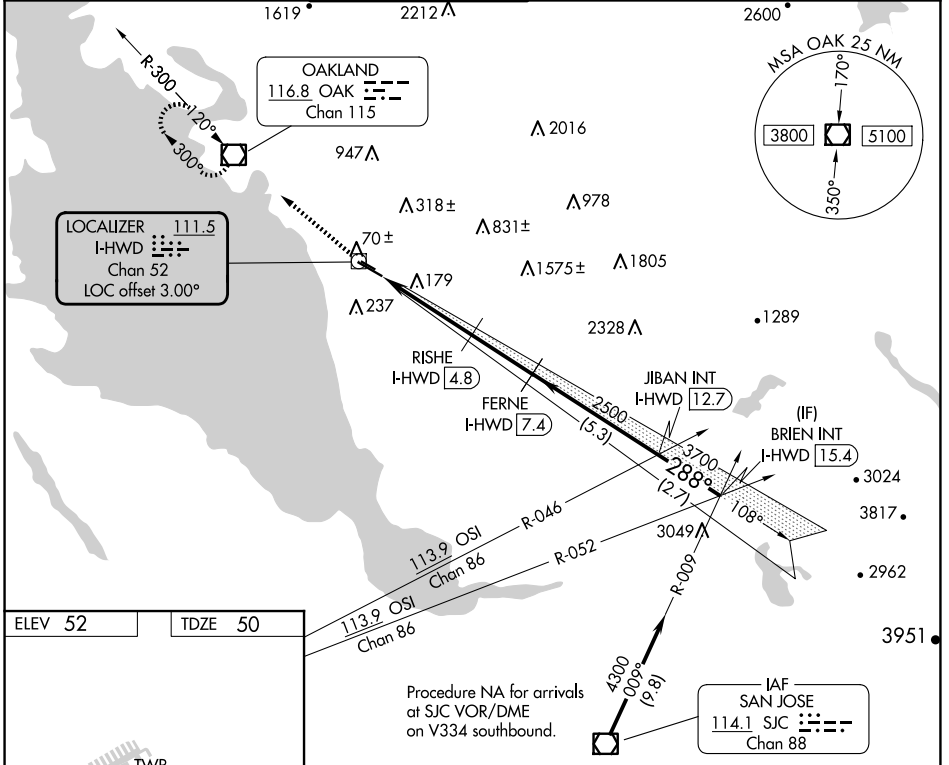
HAYWARD EXEC (HWD)

DME required.

⚠ Rwy 28L helicopter visibility reduction below 3/4 SM NA. Circling Rwy 10L, 28R NA at night. Circling NA north of Rwy 10L-28R. When local altimeter setting not received, use OAK altimeter setting and increase all MDAs 40 feet and Circling visibility Cat D 1/4 SM.

MISSED APPROACH: Climb to 2100 direct OAK VOR/DME and hold.

ATIS 126.7	NORCAL APP CON 124.4 351.8	HAYWARD TOWER * 120.2 (CTAF) 257.8	GND CON 121.4	CLNC DEL 128.05	UNICOM 122.95
----------------------	--------------------------------------	--	-------------------------	---------------------------	-------------------------



2100	OAK	VGSIs and descent angles not coincident (VGSIs Angle 4.00/TCH 35).		BRIEN INT
		RISHE	FERNE	JIBAN INT
		I-HWID 4.8	I-HWID 7.4	I-HWID 12.7
		I-HWID 1.8	I-HWID 0.9	I-HWID 15.4
		3.44°	TCH 55	288°
		1560	2500	3700
		1 NM	3 NM	2.6 NM
		5.3 NM	2.7 NM	

CATEGORY	A	B	C	D
S-28L	500-1	450 (500-1)	500-1 3/8	450 (500-1 3/8)
CIRCLING	540-1	488 (500-1)	540-1 1/2 488 (500-1 1/2)	920-2 3/4 868 (900-2 3/4)

SW-2, 15 MAY 2025 to 12 JUN 2025

SW-2, 15 MAY 2025 to 12 JUN 2025