

MINOT, NORTH DAKOTA

# RNAV (GPS) Y RWY 12

WAAS CH 51051 W12B	APCH CRS 118°	Rwy ldg THRE 13,198 Arpt Elev 1666
--------------------------	------------------	--

(USAF)

MINOT AFB (KMIB)

RNP APCH-GPS

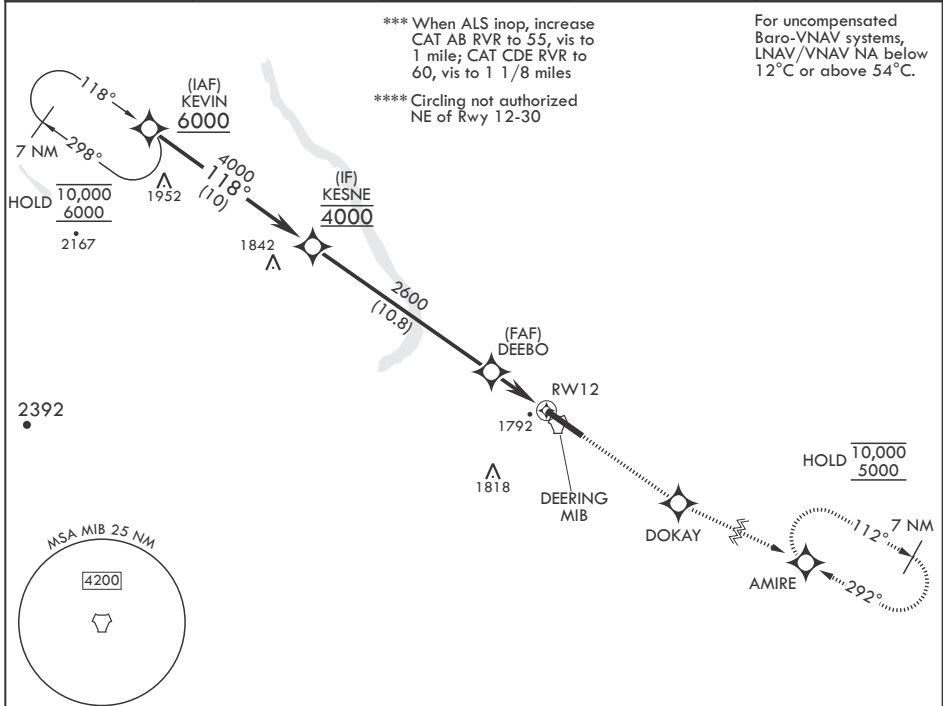
ALSF-1

MISSED APPROACH: Climb to 5000 direct DOKAY, track 108° to AMIRE and hold.

\* When ALS inop, increase RVR to 40, vis to 3/4 mile.  
\*\* When ALS inop, increase RVR to 60, vis to 1 1/8 miles.

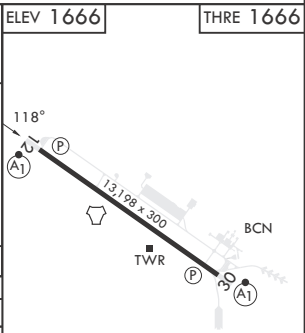


ATIS* 278.8	APP CON 119.6 363.8	TOWER* 120.65 253.5	GND CON 134.0 275.8	CLNC DEL 326.2
----------------	------------------------	------------------------	------------------------	-------------------



EMERG SAFE ALT 100 NM 4800

KEVIN 6000	↑ 5000	DOKAY	tr 108°	AMIRE	ELEV 1666	THRE 1666
KEVIN 6000	↓ 4000	DEEBO	↓ 2600	1.4 NM to RWY 12	3.3 NM	RWY 12
GP 2.50° TCH 48						
CATEGORY	A	B	C	D	E	
LPV DA*	1866/24		200	(200-1/2)		
LNAV/VNAV DA**	2057/35		391	(400-5/8)		
LNAV MDA***	2080/24 414 (500-1/2)		2080/40	414	(500-3/4)	
<b>C</b> CIRCLING****	2120-1 454 (500-1)	2140-1 474 (500-1)	2180-1 1/2 514 (600-1 1/2)	2320-2 654 (700-2)	2320-2 1/4 654 (700-2 1/4)	



MINOT, NORTH DAKOTA

48°25'N - 101°21'W

MINOT AFB (KMIB)

Orig 15JUN23

# RNAV (GPS) Y RWY 12

NC-1, 15 MAY 2025 to 12 JUN 2025

NC-1, 15 MAY 2025 to 12 JUN 2025