

MINOT, NORTH DAKOTA

ILS or LOC Y RWY 30


LOC I-MIB 109.9	APCH CRS 298°	Rwy Idg 13,198 TDZE 1646 Arprt Elev 1666
---------------------------	-------------------------	---

[USAF]

MINOT AFB (KMIB)

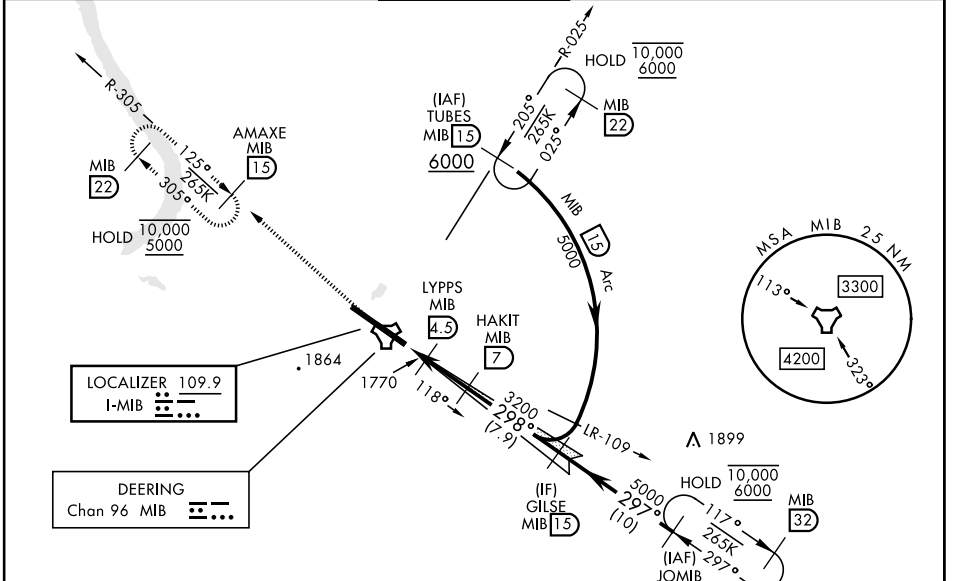
RADAR or DME required.

*When ALS inop, increase RVR to 40 and vis to 3/4 mile
 **When ALS inop, increase RVR to 55, vis to 1 mile.
 ***Circling not authorized N of Rwy 12-30.
 ****When ALS inop, increase CAT AB RVR to 55 and vis to 1 mile,
 CAT CDE vis to 1 1/2 miles.


ALSF-1


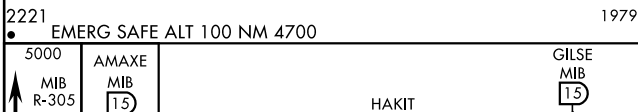
MISSED APPROACH: Climb to 5000 via MIB TACAN R-305 direct AMAXE and hold.

ATIS ★ 278.8	MINOT APP CON 119.6 363.8	MINOT TOWER ★ 120.65 253.5	GND CON 134.0 275.8	CLNC DEL 326.2
------------------------	-------------------------------------	--------------------------------------	-------------------------------	--------------------------

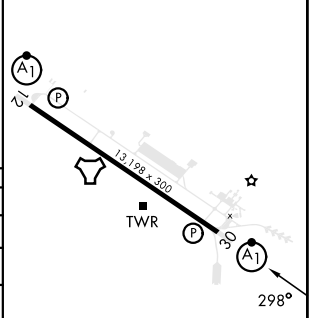
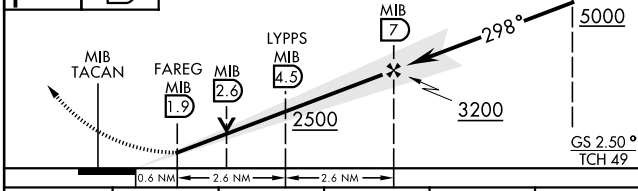




LOCALIZER 109.9
 I-MIB 

DEERING
 Chan 96 MIB 



ELEV 1666	TDZE 1646
-----------	-----------



CATEGORY	A	B	C	D	E
S-ILS 30*	1846/24		200	(200-1/2)	
S-LOC 30**	2020/24	374 (400-1/2)	2020/35	374	(400-3/4)
 CIRCLING***	2120-1 454 (500-1)	2140-1 474 (500-1)	2180-1 1/2 514 (600-1 1/2)	2320-2 654 (700-2)	2320-2 1/4 654 (700-2 1/4)
LOCAL ALTIMETER WITHOUT LAST STEPDOWN FIX					
S-LOC 30****	2140/24	494 (500-1/2)	2140/50	494	(500-1)
 CIRCLING***	2140-1	474 (500-1)	2180-1 1/2 514 (600-1 1/2)	2320-2 654 (700-2)	2320-2 1/4 654 (700-2 1/4)

HIRL Rwy 12-30

	FAF to MAP 5.2 NM				
Knots	60	90	120	150	180
Min:Sec	5:12	3:28	2:36	2:05	1:44

MINOT, NORTH DAKOTA
Amdt 2 16MAY24

48° 25'N-101° 21'W

MINOT AFB (KMIB)

ILS or LOC Y RWY 30

NC-1, 15 MAY 2025 to 12 JUN 2025

NC-1, 15 MAY 2025 to 12 JUN 2025