

MINOT, NORTH DAKOTA

# HI-TACAN Z RWY 30

TACAN MIB Chan 96	APCH CRS 292°	Rwy Idg 13,198 TDZE 1646 Arprt Elev 1666
----------------------	------------------	------------------------------------------------

[USAF]

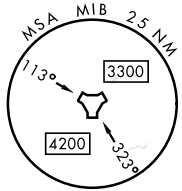
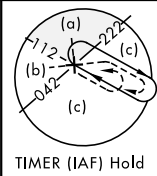
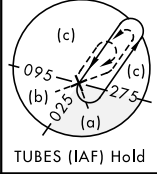
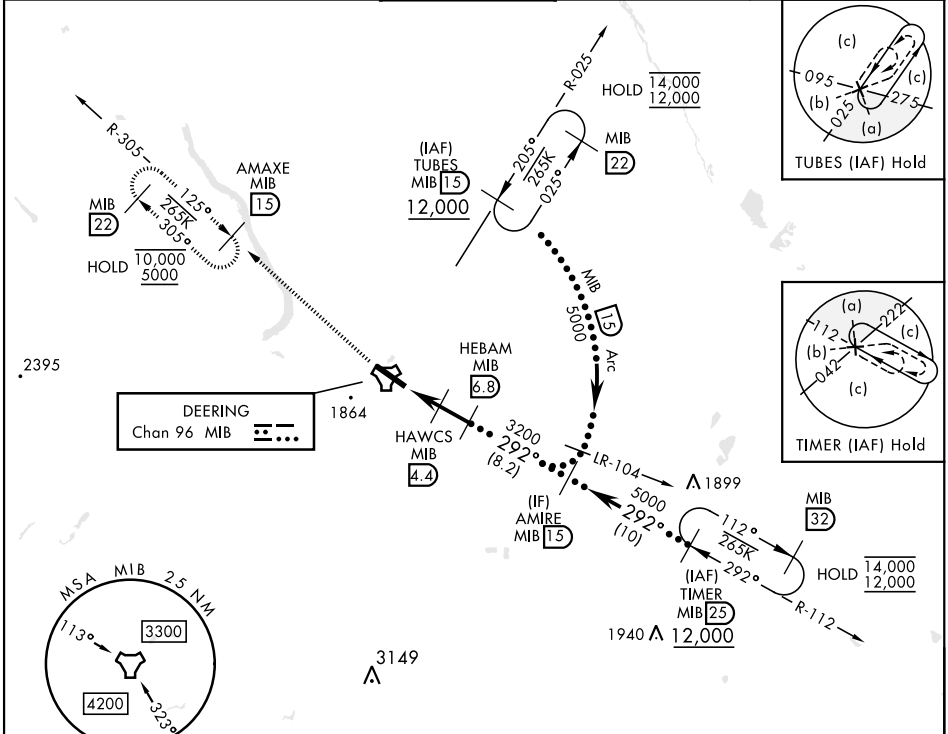
MINOT AFB (KMIB)

\* When ALS inop, increase CAT CDE vis to 1 1/2 miles.  
 \*\* Circling not authorized N of Rwy 12-30.



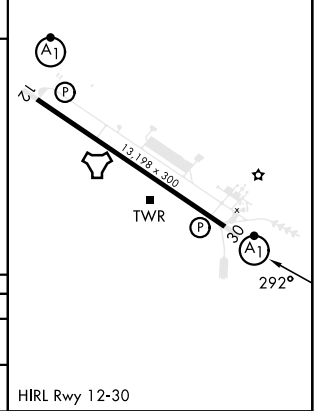
MISSED APPROACH: Climb to 5000 via  
 MIB TACAN R-305 direct AMAXE and hold.

ATIS ★ 278.8	MINOT APP CON 119.6 363.8	MINOT TOWER ★ 120.65 253.5	GND CON 134.0 275.8	CLNC DEL 326.2
-----------------	------------------------------	-------------------------------	------------------------	-------------------



ELEV 1666	TDZE 1646
-----------	-----------

5000 MIB R-305	AMAXE MIB 15	HEBAM MIB 6.8	AMIRE MIB 15
MIB TACAN	MIB 3.2	HAWCS MIB 4.4	5000
GEVGE MIB 1.9	2520	3200	5000
0.4		2.4 NM	
2.5 NM		2.62°	
TCH 49		292°	
CATEGORY	C	D	E
S-30 *	2100/45 454 (500-7/8)		
CIRCLING **	2180-1 1/2 514 (600-1 1/2)	2320-2 654 (700-2)	2320-2 1/4 654 (700-2 1/4)



MINOT, NORTH DAKOTA  
 Amdt 1 16MAY24

48°25'N-101°21'W

MINOT AFB (KMIB)

# HI-TACAN Z RWY 30

NC-1, 15 MAY 2025 to 12 JUN 2025

NC-1, 15 MAY 2025 to 12 JUN 2025