

# HII-LS or LOC Z RWY 12

LOC I-MJW <b>109.9</b>	APCH CRS <b>118°</b>	Rwy Idg <b>13,198</b> TDZE <b>1666</b> Arpt Elev <b>1666</b>
---------------------------	-------------------------	--

[USAF]

MINOT AFB (KMIB)

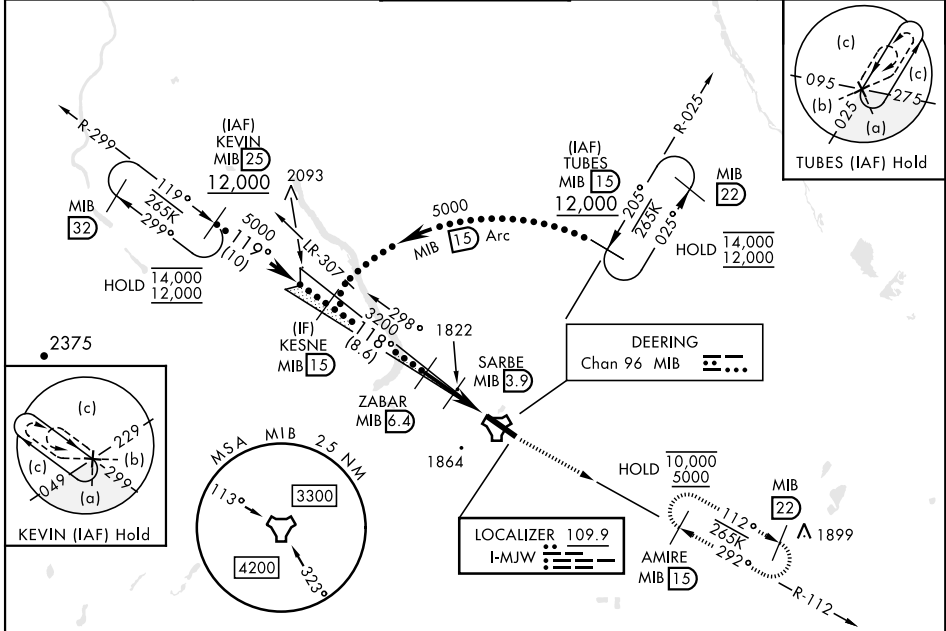
RADAR or DME required.

- \* When ALS inop, increase RVR to 40 and vis to 3/4 miles.
- \*\* When ALS inop, increase RVR 60 and vis to 1 1/2 miles.
- \*\*\* When ALS inop, increase vis to 1 1/2 miles.
- \*\*\*\* Circling not authorized N of Rwy 12-30.

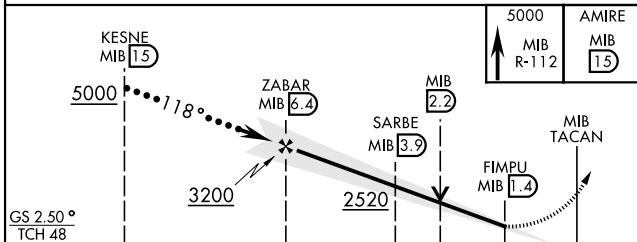


MISSED APPROACH: Climb to 5000 via MIB TACAN R-112 direct AMIRE and hold.

ATIS <b>278.8</b>	MINOT APP CON <b>119.6 363.8</b>	MINOT TOWER <b>120.65 253.5</b>	GND CON <b>134.0 275.8</b>	CLNC DEL <b>326.2</b>
----------------------	-------------------------------------	------------------------------------	-------------------------------	--------------------------

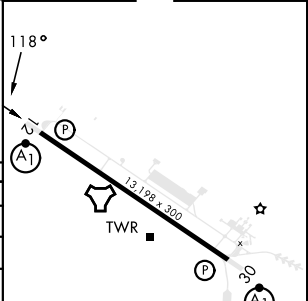


EMERG SAFE ALT 100 NM 4700



ELEV 1666	TDZE 1666
-----------	-----------

CATEGORY	C	D	E
S-ILS 12*	1866/24	200	(200-1/2)
S-LOC 12**	2080/40	414	(500-3/4)
**** CIRCLING	2180-1 1/2 514 (600-1 1/2)	2320-2 654 (700-2)	2320-2 1/4 654 (700-2 1/4)
LOCAL ALTIMETER WITHOUT LAST STEPDOWN FIX			
S-LOC 12***	2200/55	534	(600-1)
**** CIRCLING	2200-1 1/2 534 (600-1 1/2)	2320-2 654 (700-2)	2320-2 1/4 654 (700-2 1/4)



HIRL Rwy 12-30					
FAF to MAP 5.1 NM					
Knots	120	140	160	180	200
Min:Sec	2:33	2:11	1:55	1:42	1:32

# HII-LS or LOC Z RWY 12

NC-1, 15 MAY 2025 to 12 JUN 2025

NC-1, 15 MAY 2025 to 12 JUN 2025