

GRAND FORKS, NORTH DAKOTA

# RNAV (GPS) RWY 36

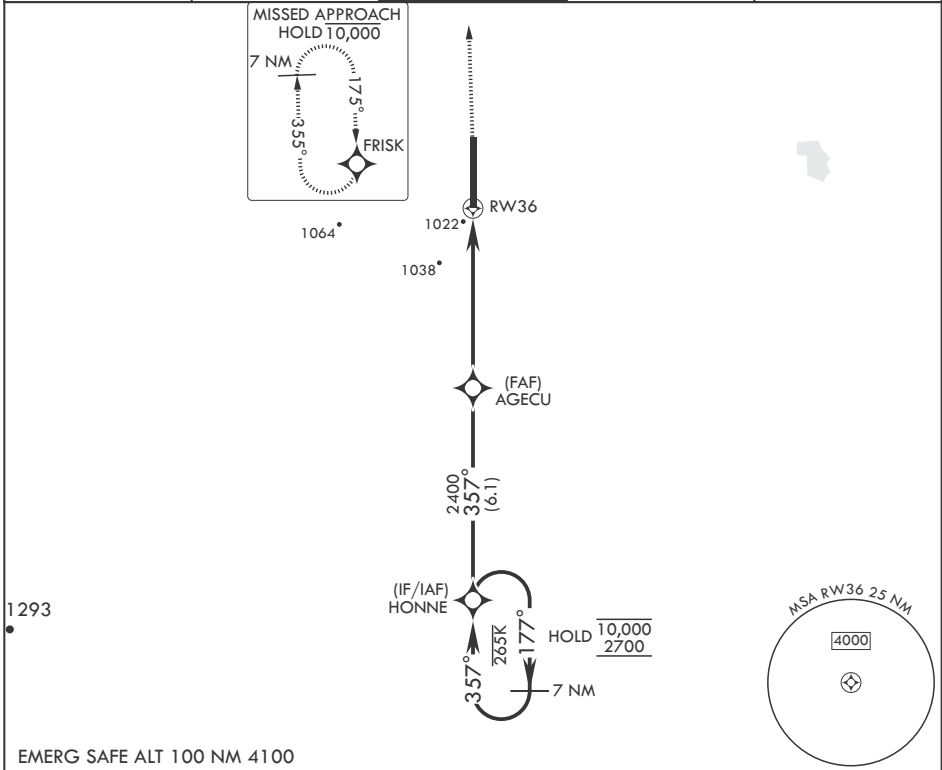
APCH CRS	Rwy Idg	12,351
357°	TDZE	911
	Arprt Elev	911

- (USAF)

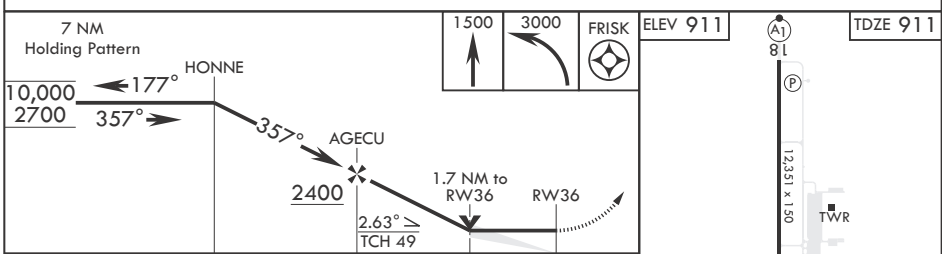
GRAND FORKS AFB (KRDR)

RNP APCH-GPS	ALSF-1	MISSED APPROACH: Climb to 1500 then climbing left turn to 3000 direct FRISK and hold.
* When ALS inop, increase CAT AB RVR to 55, vis to 1 mile; CAT CDE vis to 1 1/2 miles.		
** Circling E of Rwy 18-36 not authorized.		

ATIS <b>273.45</b>	APP CON* <b>118.1 318.1</b>	RED RIVER TOWER* <b>124.9 349.0</b>	GND CON <b>119.15 275.8</b>	CLNC DEL <b>119.15 360.7</b>
-----------------------	--------------------------------	--	--------------------------------	---------------------------------



EMERG SAFE ALT 100 NM 4100



CATEGORY	A	B	C	D	E
LNAV MDA*	1440/24	529 (600-½)	1440/55	529	(600-1)
<b>C</b> CIRCLING**	1440-1	529 (600-1)	1440-1½ 529 (600-1½)	1540-2 629 (700-2)	1560-2¼ 649 (700-2¼)

HIRL all Rwys

GRAND FORKS, NORTH DAKOTA

47°58'N - 97°24'W

GRAND FORKS AFB (KRDR)

Orig 10AUG23

# RNAV (GPS) RWY 36

NC-1, 15 MAY 2025 to 12 JUN 2025

NC-1, 15 MAY 2025 to 12 JUN 2025