

GRAND FORKS, NORTH DAKOTA

# RNAV (GPS) RWY 18

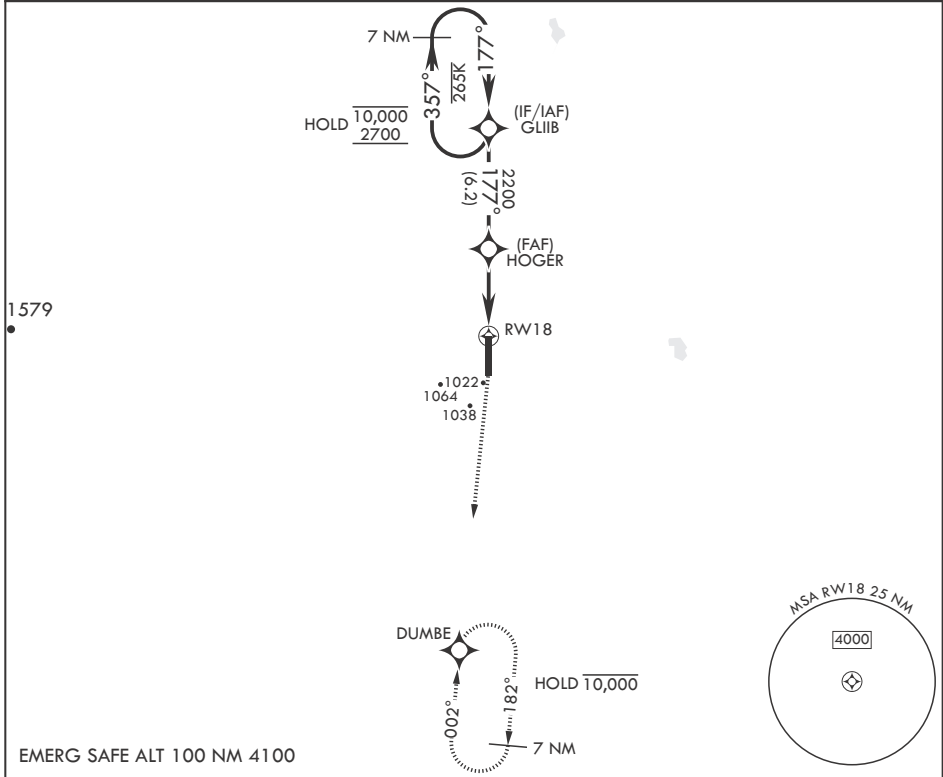
APCH CRS	Rwy Idg	12,351
177°	TDZE	900
	Arprt Elev	911

- (USAF)

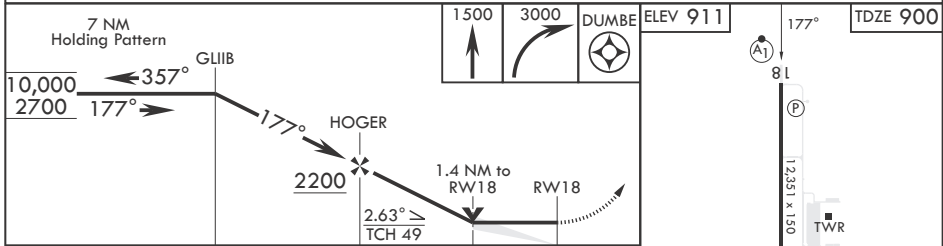
GRAND FORKS AFB (KRDR)

RNP APCH-GPS	ALSIF-1	MISSED APPROACH: Climb to 1500 then climbing right turn to 3000 direct DUMBE and hold.
* When ALS inop, increase CAT AB RVR to 55, vis to 1 mile; CAT CDE vis to 1 1/4 miles.		
** Circling E of Rwy 18-36 not authorized.		

ATIS <b>273.45</b>	APP CON* <b>118.1 318.1</b>	RED RIVER TOWER* <b>124.9 349.0</b>	GND CON <b>119.15 275.8</b>	CLNC DEL <b>119.15 360.7</b>
-----------------------	--------------------------------	--	--------------------------------	---------------------------------



EMERG SAFE ALT 100 NM 4100



CATEGORY	A	B	C	D	E
LNVAI MDA*	1340/24	440 (500-1/2)	1340/40	440	(500-3/4)
CIRCLING**	1340-1 429 (500-1)	1380-1 469 (500-1)	1380-1 1/2 469 (500-1 1/2)	1540-2 629 (700-2)	1560-2 1/4 649 (700-2 1/4)

HIRL all Rwys

GRAND FORKS, NORTH DAKOTA

47°58'N - 97°24'W

GRAND FORKS AFB (KRDR)

Orig 10AUG23

# RNAV (GPS) RWY 18

NC-1, 15 MAY 2025 to 12 JUN 2025

NC-1, 15 MAY 2025 to 12 JUN 2025