

VOR FKL <b>109.6</b>	APP CRS <b>187°</b>	Rwy ldg TDZE Apt Elev	<b>5200</b> <b>1540</b> <b>1540</b>
-------------------------	------------------------	-----------------------------	---

# VOR RWY 21

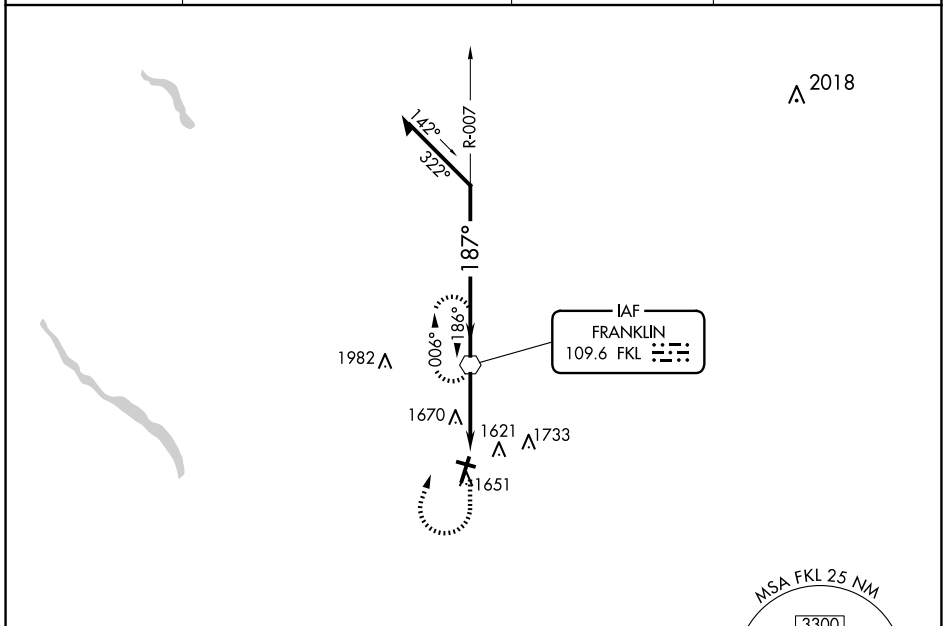
VENANGO RGNL (F'KL)

**⚠** Inop table does not apply. When local altimeter setting not received, use Port Meadville altimeter setting and increase all MDA 80 feet and S-21 Cats C/D visibility 3/8 mile. Circling Rwy 12 NA at night. Rwy 12 helicopter visibility reduction below 1 SM NA.

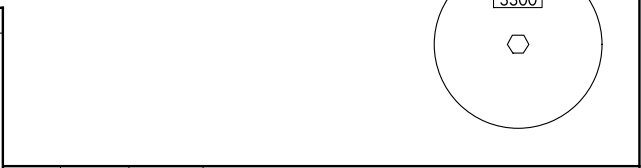
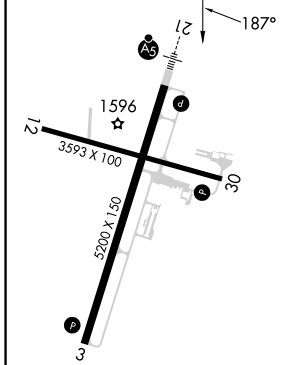
**MALSR**  
AS

**MISSED APPROACH:** Climb to 2200, then climbing right turn to 3300 direct FKL VOR and hold.

AWOS-3PT <b>118.175</b>	YOUNGSTOWN APP CON ★ <b>126.25 322.3</b>	CLNC DEL <b>126.25</b>	UNICOM <b>122.7</b> (CTAF) <b>📞</b>
----------------------------	---	---------------------------	--



ELEV 1540	<b>D</b>	TDZE 1540
-----------	----------	-----------



2200	3300	FKL	Remain within 10 NM
↑	↷	📡	
FKL VOR		007°	3200
2700		187°	
3.3 NM		3.13° TCH 57	

MIRL Rwy 12-30 <b>📞</b>	HIRL Rwy 3-21 <b>📞</b>				
FAF to MAP 3.3 NM					
Knots	60	90	120	150	180
Min:Sec	3:18	2:12	1:39	1:19	1:06
CATEGORY	A	B	C	D	
S-21	1920-1 380 (400-1)				
CIRCLING	1960-1 420 (500-1)	2000-1 460 (500-1)	2040-1½ 500 (500-1½)	2100-2 560 (600-2)	

NE-4, 15 MAY 2025 to 12 JUN 2025

NE-4, 15 MAY 2025 to 12 JUN 2025