

# VOR/DME Z RWY 32

VORTAC TQQ <b>113.0</b> Chan <b>77</b>	APCH CRS <b>314°</b>	Rwy Idg THRE: <b>12,001</b> 5550 Arpt Elev <b>5550</b>
--	-------------------------	---

AL-3188 [USAF]

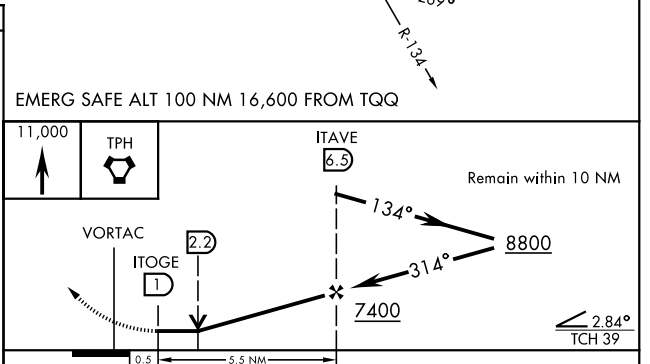
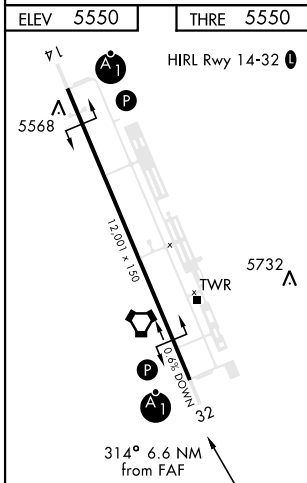
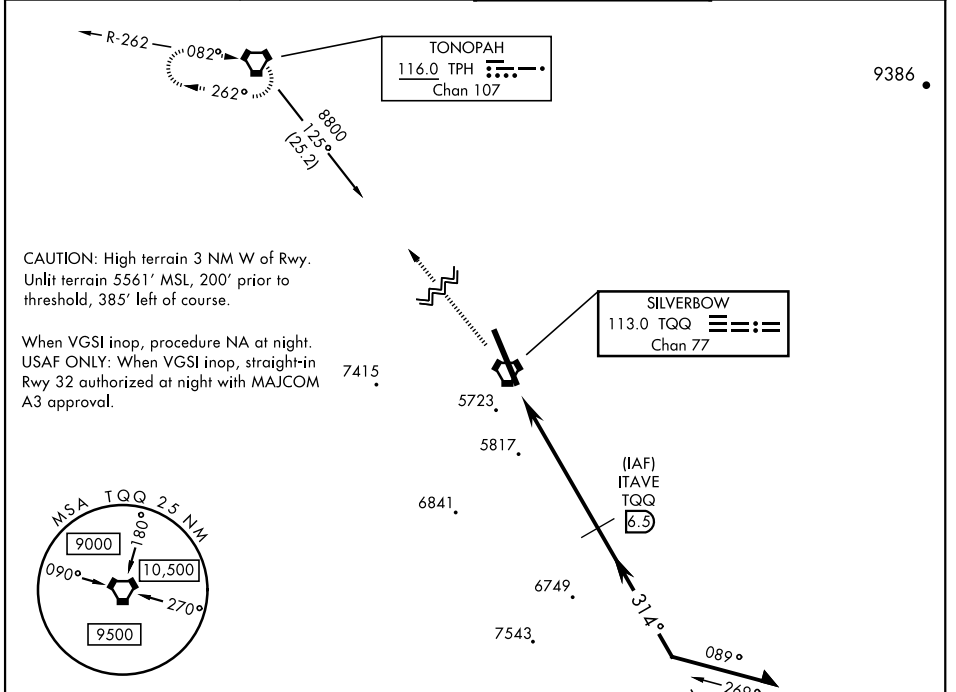
TONOPA TEST RANGE (KTNX)

**⚠** \*Circling not authorized W of Rwy 14-32.

ALSIF-1

MISSED APPROACH: Climb to 11,000 direct to TPH VORTAC and hold. Continue climb in holding to 11,000.

AWOS <b>113.0</b>	NELLIS CONTROL <b>119.35 254.4</b>	SILVERBOW TOWER* <b>124.75 257.95</b> <b>0</b>	GND CON <b>127.25 335.5</b>
----------------------	---------------------------------------	---	--------------------------------



CATEGORY	A	B	C	D	E
S-32	6080/24 530 (600-1/2)		6080/55 530 (600-1/2)	NOT AUTHORIZED	
<b>C</b> CIRCLING*	6080-1 530 (600-1)		6080-1 1/2 530 (600-1/2)	NOT AUTHORIZED	

# VOR/DME Z RWY 32

SW-4, 15 MAY 2025 to 12 JUN 2025

SW-4, 15 MAY 2025 to 12 JUN 2025