

TONOPAH, NEVADA

RNAV (GPS) RWY 32

APCH CRS	Rwy ldg	12,001
321°	TDZE	5550
	Arpt Elev	5550

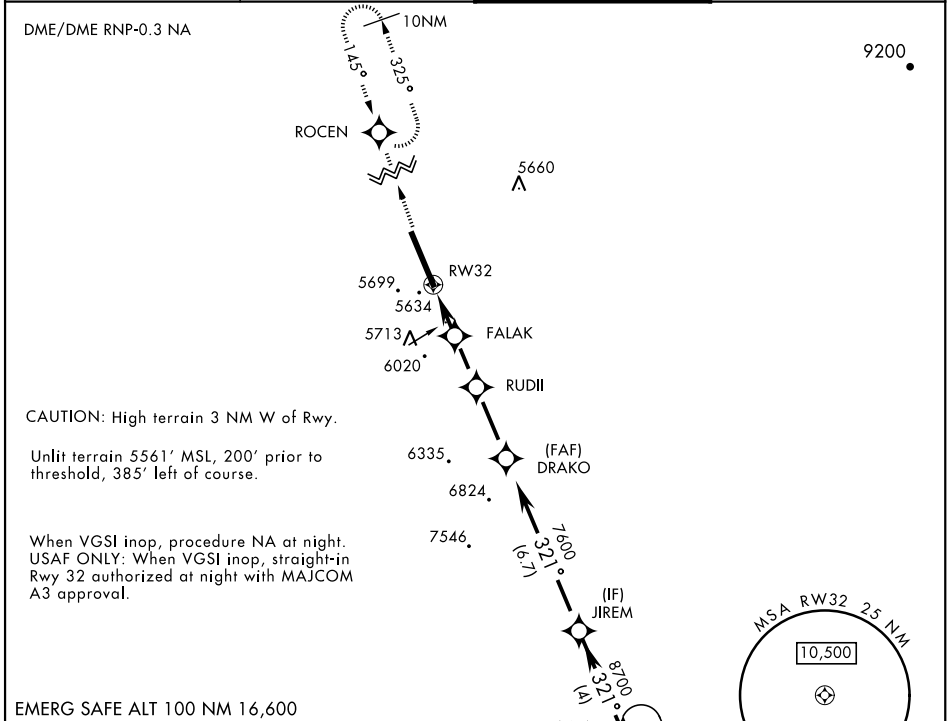
AL-3188 [USAF]

TONOPAH TEST RANGE (KTNX)

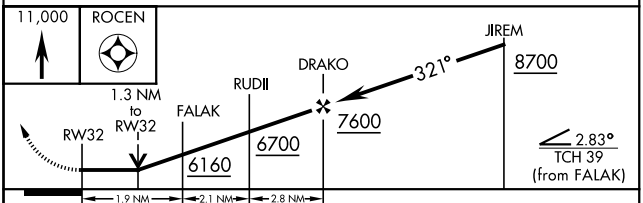
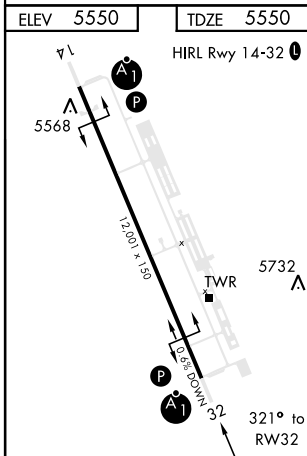
ALSF-1
 * When ALS inop, increase CAT CD vis to 1 1/4 miles.
 ** Circling not authorized W of Rwy 14-32.

MISSED APPROACH: Climb to 11,000 direct ROCEN and hold, continue climb-in-hold to 11,000.

AWOS 113.0	NELLIS CONTROL 119.35 254.4	SILVERBOW TOWER * 124.75 257.95	GND CON 127.25 335.5
----------------------	---------------------------------------	---	--------------------------------



EMERG SAFE ALT 100 NM 16,600



CATEGORY	A	B	C	D
LNVA MDA *	5980/24 430 (500-1/2)		5980/40 430 (500-3/4)	
CIRCLING **	6040-1 490 (500-1)		6040-1 1/2 490 (500-1/2)	6100-2 550 (600-2)

TONOPAH, NEVADA
Amdt 3 29MAR18

37°47'N-116°47'W

TONOPAH TEST RANGE (KTNX)

RNAV (GPS) RWY 32

SW-4, 15 MAY 2025 to 12 JUN 2025

SW-4, 15 MAY 2025 to 12 JUN 2025