

TONOPAH, NEVADA

RNAV (GPS) RWY 14

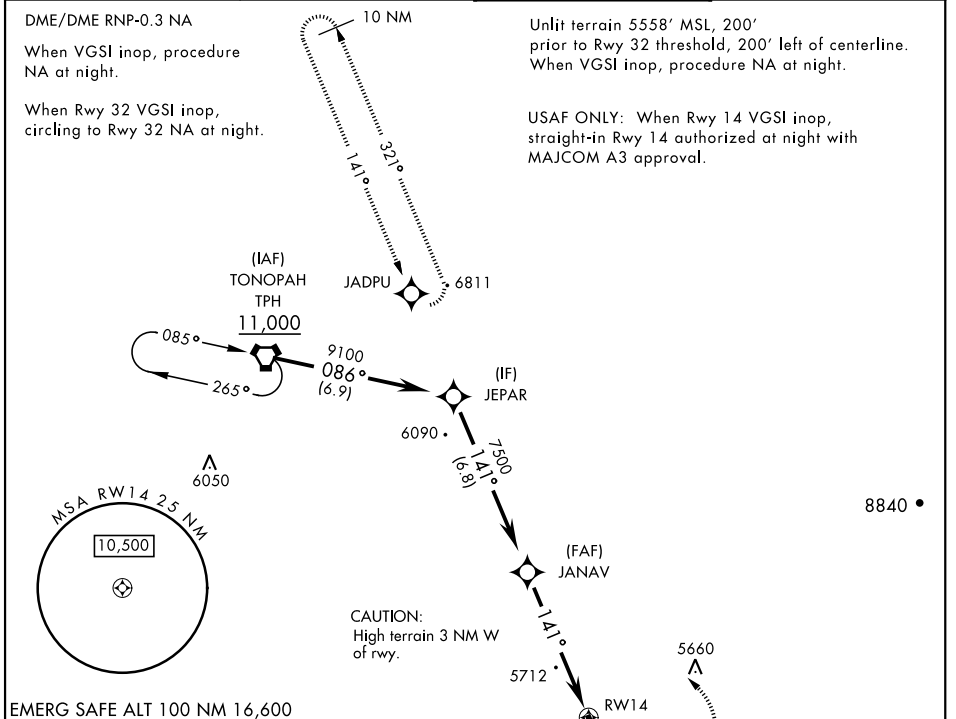
APCH CRS 141°	Rwy ldg 12,001 TDZE 5496 Arprt Elev 5550
-------------------------	---

AL-3188 [USAF]

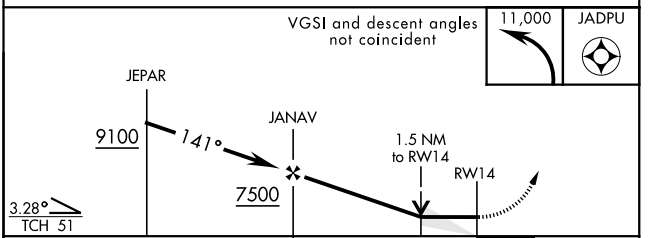
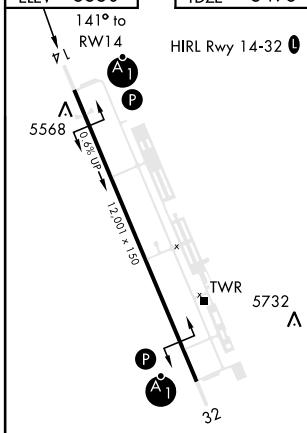
TONOPAH TEST RANGE (KTNX)

<p>▼ * When ALS inop, increase CAT AB RVR to 55, vis to 1 mile, CAT CD vis to 1 3/8 miles. ** Circling not authorized W of Rwy 14-32.</p>	<p>ALSF-1</p>	<p>MISSED APPROACH: Turn left climbing to 11,000 direct JADPU and hold, continue climb-in-hold to 11,000.</p>
---	---------------	---

<p>AWOS 113.0</p>	<p>NELLIS CONTROL 119.35 254.4</p>	<p>SILVERBOW TOWER * 124.75 257.95</p>	<p>GND CON 127.25 335.5</p>
------------------------------	---	---	--



EMERG SAFE ALT 100 NM 16,600



CATEGORY	A	B	C	D
LNAV MDA *	5960/24 464 (500-1/2)		5960/50 464 (500-1)	
CIRCLING **	6040-1 490 (500-1)		6040-1 1/2 490 (500-1 1/2)	6100-2 550 (600-2)

TONOPAH, NEVADA
Amdt 4 29MAR18

37°47'N-116°47'W

TONOPAH TEST RANGE (KTNX)

RNAV (GPS) RWY 14

SW-4, 15 MAY 2025 to 12 JUN 2025

SW-4, 15 MAY 2025 to 12 JUN 2025