

JAYSN ONE (RNAV) DEPARTURE (JAYSN1 • JAYSN)

TONOPAH, NEVADA

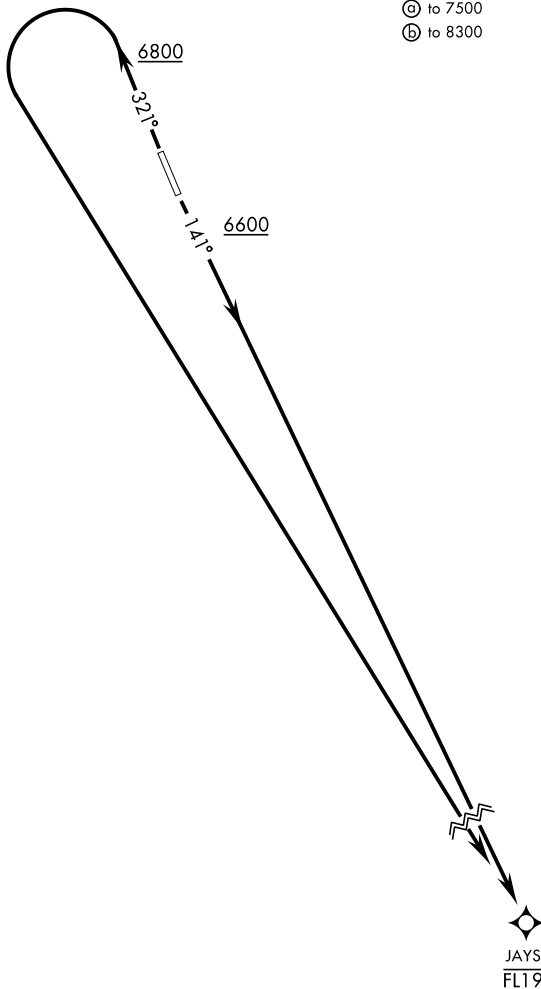
AWOS 113.0
 GND CON
 127.25 335.5
 SILVERBOW TOWER ★
 124.75 257.95
 NELLIS CONTROL
 119.35 254.4

[USAF] AL-3188

Rwy	Knots	60	120	180	240	300	360
14 (a)	V/V(fpm)	246	492	738	984	1230	1476
32 (b)	V/V(fpm)	336	672	1008	1344	1680	2016

Minimum Climb Rate

- (a) to 7500
- (b) to 8300



RNAV1

GPS REQUIRED



DEPARTURE ROUTE DESCRIPTION

TAKEOFF RWY 14: Climb on heading 141° to 6600, then direct to cross JAYSN at or below FL190 or as assigned by ATC.

TAKEOFF RWY 32: Climb on heading 321° to 6800, then left turn direct JAYSN or as assigned by ATC.

JAYSN ONE (RNAV) DEPARTURE (JAYSN1 • JAYSN)

Orig 24MAR22

TONOPAH, NEVADA
TONOPAH TEST RANGE (KTNX)

SW-4, 15 MAY 2025 to 12 JUN 2025

SW-4, 15 MAY 2025 to 12 JUN 2025