

ILS or LOC/DME RWY 32

| | | |
|---------------------------|-------------------------|---|
| LOC I-UVV 111.7 | APCH CRS 321° | Rwy Ildg THRE 12,001 5550 Arprt Elev 5550 |
|---------------------------|-------------------------|---|

AL-3188 [USAF]

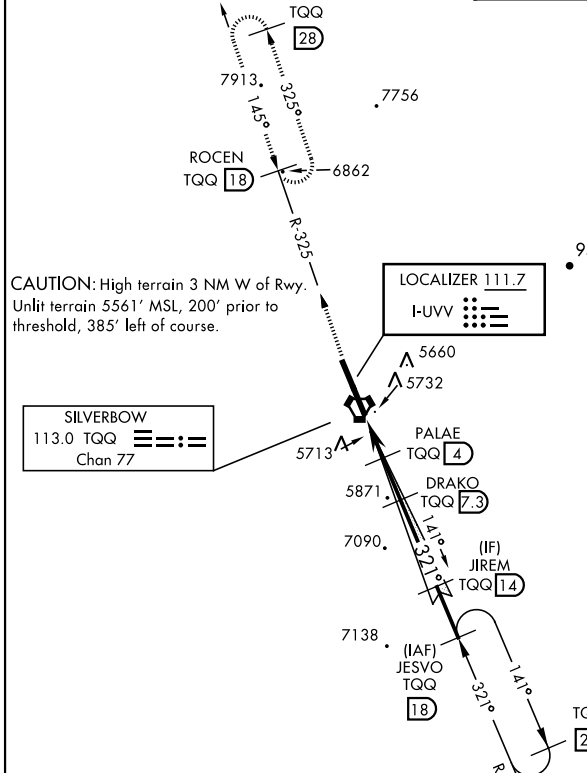
TONOPAH TEST RANGE (KTNX)

▽ * When ALS inop, increase CAT CDE vis to 1/4 miles.
** Circling not authorized W of Rwy 14-32



MISSED APPROACH: Climb to 11,000 via TQQ VORTAC R-325 to ROCEN and hold, continue climb in hold to 11,000.

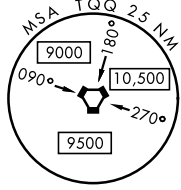
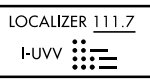
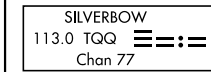
| | | | |
|----------------------|---------------------------------------|---|--------------------------------|
| AWOS 113.0 | NELLIS CONTROL 119.35 254.4 | SILVERBOW TOWER * 124.75 257.95 | GND CON 127.25 335.5 |
|----------------------|---------------------------------------|---|--------------------------------|



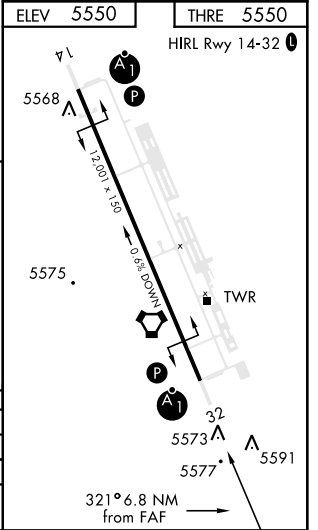
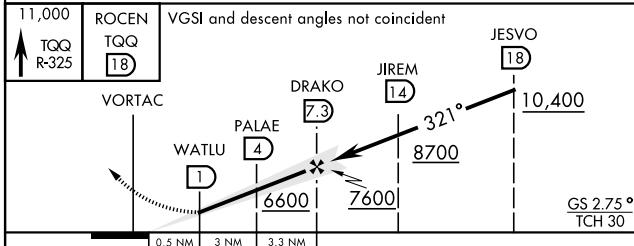
When VGSI inop, procedure NA at night.
USAF ONLY: When VGSI inop, straight-in Rwy 32 authorized at night with MAJCOM A3 approval.

ILS Rwy 32; F-28, CV-340/440/580, B-737, C-9, DC-9, C-130, T-43, B-2, S-3 Wheel Crossing Height 15'. ILS procedure NA for Height Group 3 and 4 aircraft due to low TCH.

CAUTION: High terrain 3 NM W of Rwy. Unlit terrain 5561' MSL, 200' prior to threshold, 385' left of course.



EMERG SAFE ALT 100 NM 16,600



| CATEGORY | A | B | C | D | E |
|--------------------|--------------------|--------------------------|--------------------|---|---|
| S-ILS 32 | | 5800-1 | 250 (300-1) | | |
| S-LOC 32* | | 5980-1 | 430 (500-1) | | |
| CIRCLING ** | 6040-1 490 (500-1) | 6040-1 1/2 490 (500-1/2) | 6100-2 550 (600-2) | | |

ILS or LOC/DME RWY 32

SW-4, 15 MAY 2025 to 12 JUN 2025

SW-4, 15 MAY 2025 to 12 JUN 2025