

TONOPAH, NEVADA

# ILS or LOC/DME RWY 14

LOC I-RVP <b>108.3</b>	APCH CRS <b>141°</b>	Rwy Ldg THRE <b>12,001</b> 5473	Arprt Elev <b>5550</b>
---------------------------	-------------------------	---------------------------------------	---------------------------

AL-3188 [USAF]

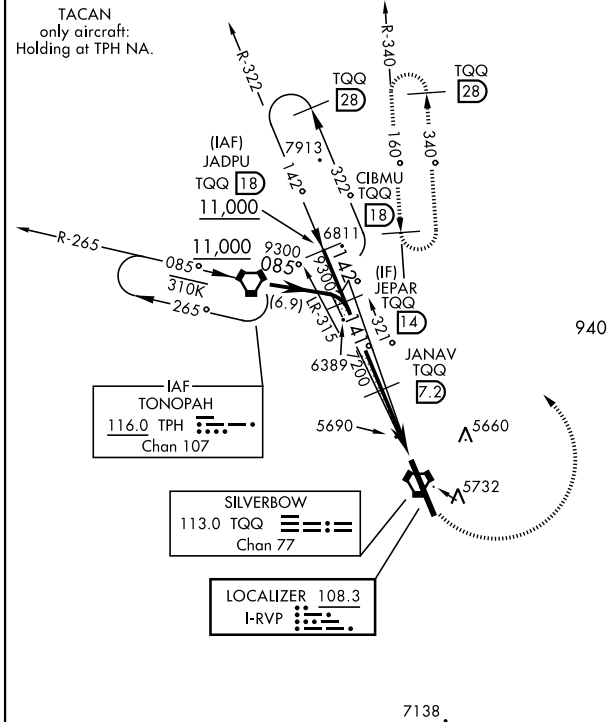
TONOPAH TEST RANGE (KTNX)

▼ \*When ALS inop, increase vis to ¼ mile.  
 \*\*When ALS inop, increase CAT AB vis to 1 mile, CAT CDE to 1½ miles.  
 \*\*\*Circling not authorized W of Rwy 14-32.



MISSED APPROACH: Turn left climbing to 11,000 via TQQ R-340 to CIBMU and hold, continue climb-in-hold to 11,000.

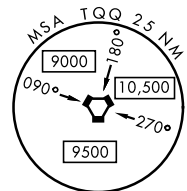
AWOS <b>113.0</b>	NELLIS CONTROL <b>119.35 254.4</b>	SILVERBOW TOWER* <b>124.75 257.95</b>	GND CON <b>127.25 335.5</b>
----------------------	---------------------------------------	--	--------------------------------



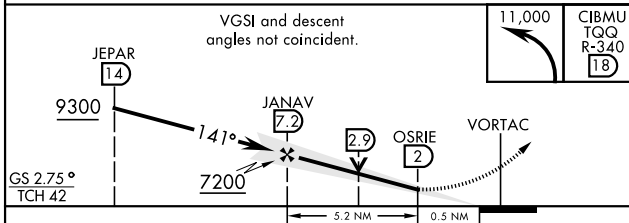
CAUTION: High terrain 3 NM W of Rwy. Unlit terrain 5558' MSL, 200' prior to Rwy 32 threshold, 200' left of centerline.

When VGSI inop, procedure NA at night. USAF ONLY: When Rwy 14 VGSI inop, straight-in Rwy 14 authorized at night with MAJCOM A3 approval. CAUTION: When Rwy 32 VGSI inop, circling to Rwy 32 NA at night.

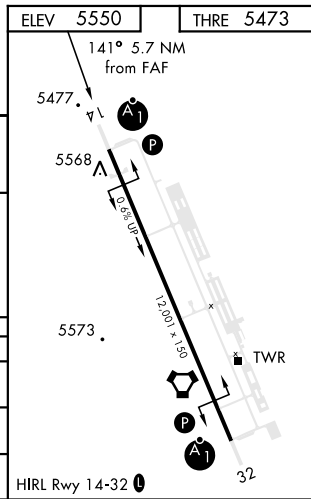
ILS Rwy 14; ILS procedure NA for Height Group 4 aircraft due to low TCH.



EMERG SAFE ALT 100 NM 16,600



CATEGORY	A	B	C	D	E
S-ILS 14*	5673 - ½		200	(200-½)	
S-LOC 14**	5960-½ 487 (500-½)		5960-1	487	(500-1)
CIRCLING***	6040-1 490 (500-1)		6040-1½ 490 (500-1½)	6100-2 550 (600-2)	



TONOPAH, NEVADA  
Amdt 3 09JAN14

37°47'N - 116°47'W

TONOPAH TEST RANGE (KTNX)

# ILS or LOC/DME RWY 14

SW-4, 15 MAY 2025 to 12 JUN 2025

SW-4, 15 MAY 2025 to 12 JUN 2025