

NORTH, SOUTH CAROLINA

RNAV (GPS) RWY 24

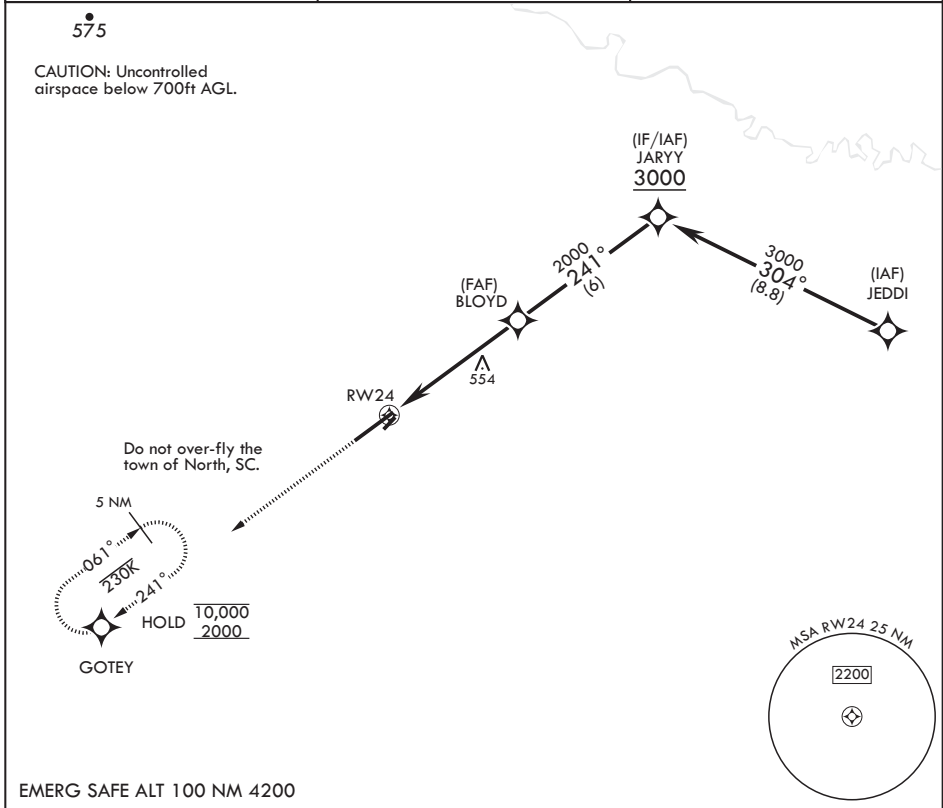
APCH CRS	Rwy Idg	8999
241°	TDZE	316
	Arprt Elev	321

AL-3017 (USAF)

NORTH AF AUX (KXNO)

RNP APCH.	MISSED APPROACH: Climb to 2000 direct GOTEY and hold, continue climb-in-hold to 2000.
▼ * Circling NA to Assault Strip.	

ASOS 118.525	COLUMBIA APP CON/DEP CON 124.15 338.2	LZ/DZ OPS FAC 120.475 235.775
-----------------	--	----------------------------------



EMERG SAFE ALT 100 NM 4200

2000	GOTEY	JARYY	ELEV 321	TDZE 316	
↑	⊕		Rwy 6 Idg 9003'		
			Rwy 24 Idg 8999'		
RWY24		BLOYD	3000		
1.4 NM to RWY24		241°			
5.5 NM		2000			
		≤ 2.81°			
		TCH 50			
		10,003 x 150	0.5% DOWN 0	241°	
		ASSAULT STRIP	0.51	231°	
		2360 x 90	0.8% UP		
		TWR			
		LZ/DZ OPS FACILITY			
		BCN			
CATEGORY	A	B	C	D	E
RNAV MDA	880-1 564 (600-1)		880-1 564 (600-1)		
CIRCLING*	940-1 619 (700-1)		940-1 619 (700-1)	1400-3 1079 (1100-3)	
HIRL Rwy 6-24					

NORTH, SOUTH CAROLINA
Amdt 3 29DEC22

33°37'N - 81°05'W

NORTH AF AUX (KXNO)

RNAV (GPS) RWY 24

SE-2, 15 MAY 2025 to 12 JUN 2025

SE-2, 15 MAY 2025 to 12 JUN 2025