

COPTER RNAV (GPS) RWY 35

APCH CRS	Rwy Idg	2005
355°	TDZE	1091
	Arprt Elev	1091

[USA]

MULDROW AHP (KHMY)

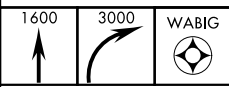
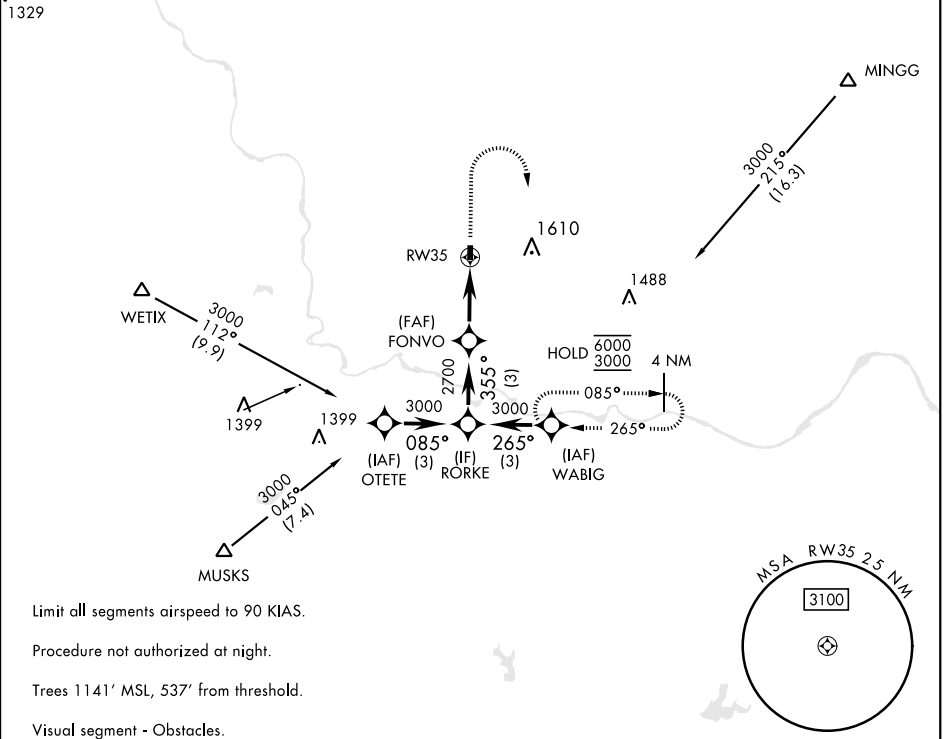
RNP APCH - GFS

▼ Obtain local altimeter setting on CTAF; when not received, use University of Oklahoma Westheimer altimeter setting minimums.
 ▲ NA

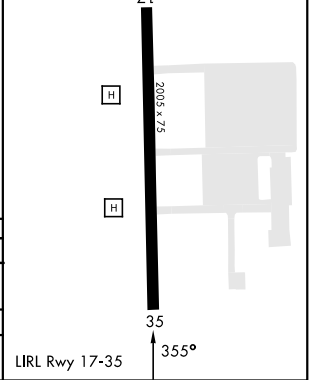
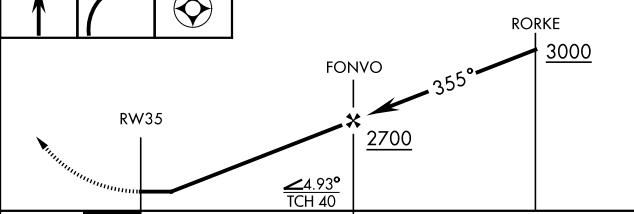
MISSED APPROACH: Climb to 1600, then climbing right turn to 3000 direct WABIG and hold.

OKC CITY APP CON
124.2 336.4

MULDROW OPS (Advisory service only)
46.9 139.425 227.2 (CTAF)



ELEV	1091	TDZE	1091
------	------	------	------



CATEGORY	COPTER		
LNAV MDA	1580-1	489	(500-1)
UNIVERSITY OF OKLAHOMA WESTHEIMER ALTIMETER SETTING MINIMUMS			
LNAV MDA	1640-1	549	(600-1)

COPTER RNAV (GPS) RWY 35

SC-1, 15 MAY 2025 to 12 JUN 2025

SC-1, 15 MAY 2025 to 12 JUN 2025