

COPTER RNAV (GPS) RWY 17

APCH CRS	Rwy Idg	2005
175°	TDZE	1091
	Arpt Elev	1091

[USA]

MULDROW AHP (KHMY)

RNP APCH - GFS

▼ Obtain local altimeter setting on CTAF; when not received, use University of Oklahoma Westheimer altimeter setting minimums.
 ▲ NA

MISSED APPROACH: Climbing left turn to 3000 direct IMIME and hold.

OKE CITY APP CON
124.2 336.4

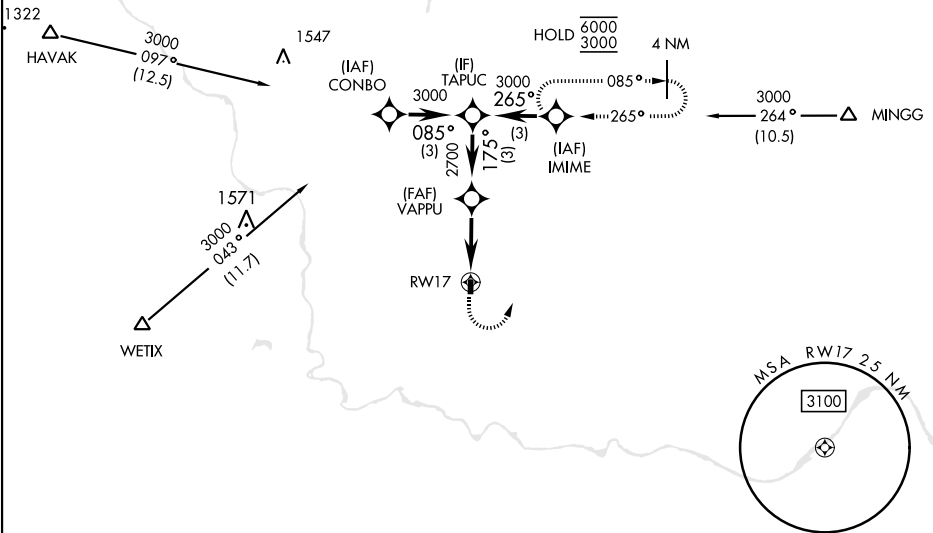
MULDROW OPS (Advisory service only)
46.9 139.425 227.2 (CTAF)

Limit all segments airspeed to 90 KIAS.

Procedure not authorized at night.

Trees 1134' MSL, 364' from threshold.

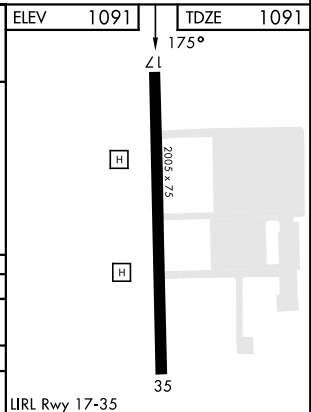
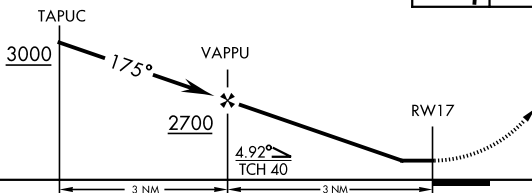
Visual segment - Obstacles.



SC-1, 15 MAY 2025 to 12 JUN 2025

SC-1, 15 MAY 2025 to 12 JUN 2025

3000	IMIME	ELEV	1091	TDZE	1091
------	-------	------	------	------	------



CATEGORY	COPTER	
LNAV MDA	1660-1	569 (600-1)
UNIVERSITY OF OKLAHOMA WESTHEIMER ALTIMETER SETTING MINIMUMS		
LNAV MDA	1720-1	629 (700-1)

LURL Rwy 17-35

COPTER RNAV (GPS) RWY 17