

WAAS CH 77600 W35A	APP CRS 348°	Rwy Idg 6100 TDZE 929 Apt Elev 946
---------------------------------	------------------------	---

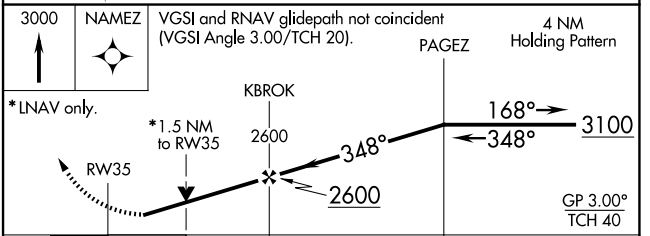
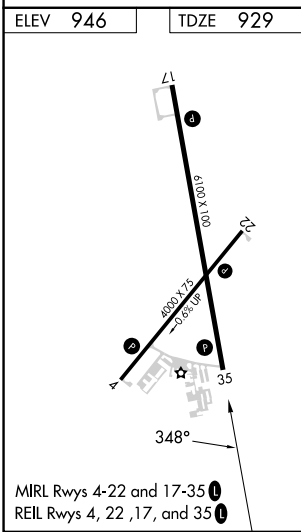
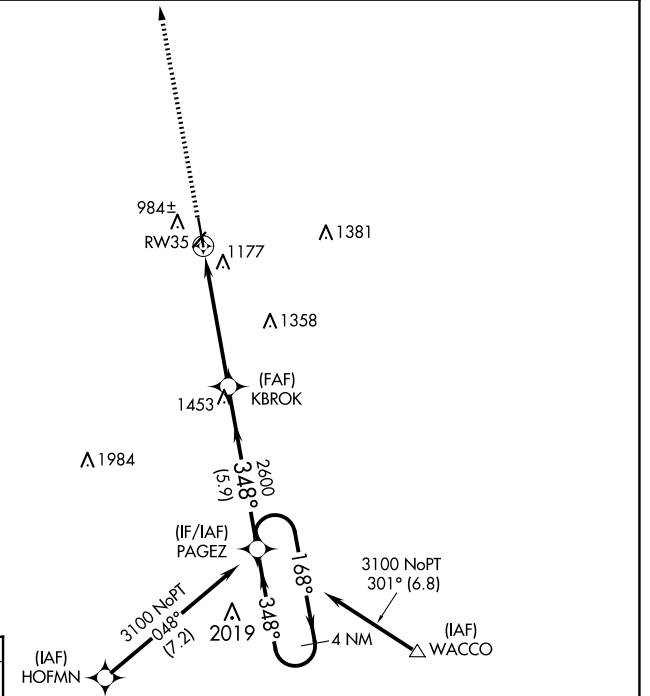
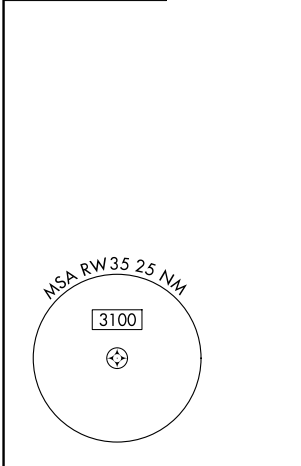
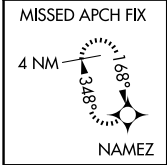
RNAV (GPS) RWY 35

ATKINSON MUNI (PTS)

⚠ For uncompensated Baro-VNAV systems, LNAV/VNAV NA below -16°C (4°F) or above 54°C (130°F). Rwy 35 helicopter visibility reduction below ¾ SM NA. DME/DME RNP-0.3 NA.

MISSED APPROACH: Climb to 3000 direct NAMEZ and hold.

AWOS-3T 118.775	KANSAS CITY CENTER 128.6 282.325	GCO 121.725	UNICOM 123.0 (CTAF) 0
---------------------------	--	-----------------------	---------------------------------



CATEGORY	A	B	C	D
LPV DA	1179-1 250 (300-1)			
LNAV/VNAV DA	1338-1½ 409 (400-1½)			
LNAV MDA	1440-1	511 (500-1)	1440-1¾	511 (500-1¾)
<input checked="" type="checkbox"/> CIRCLING	1480-1	534 (600-1)	1520-1½	1720-2½
			574 (600-1½)	774 (800-2½)

NC-2, 15 MAY 2025 to 12 JUN 2025

NC-2, 15 MAY 2025 to 12 JUN 2025