


WAAS CH <b>73036</b> <b>W12A</b>	APP CRS <b>115°</b>	Rwy Idg TDZE Apt Elev	<b>6000</b> <b>1621</b> <b>1648</b>
--	------------------------	-----------------------------	---

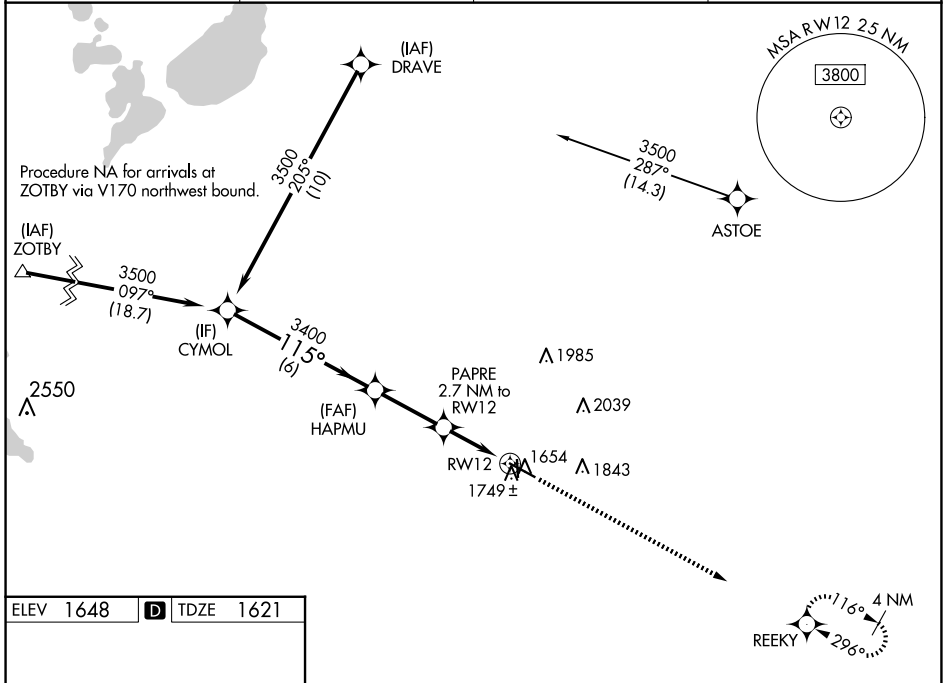
# RNAV (GPS) RWY 12

BROOKINGS RGNL (BKK)

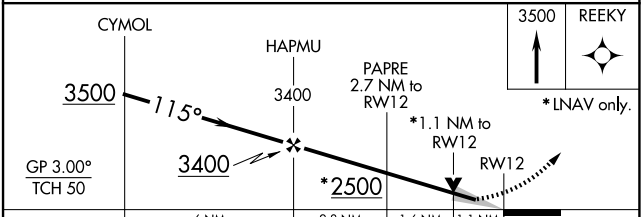
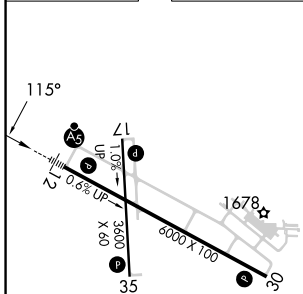
**⚠** For uncompensated Baro-VNAV systems, LNAV/VNAV NA below -18°C (0°F) or above 54°C (130°F). DME/DME RNP-0.3 NA. When local altimeter setting not received, use Pipestone altimeter setting and increase all DA 81 feet and all MDA 100 feet; increase LNAV/VNAV all Cats visibility ¼ mile; LNAV Cats C and D visibility ⅜ mile; Circling Cats C and D visibility ¼ mile. Baro-VNAV and VDP NA when using Pipestone altimeter setting. Night landing Rwy 17 NA.

**MALS**  
  
**MISSED APPROACH:**  
 Climb to 3500 direct REEKY and hold.

AWOS-3PT <b>119.925</b>	MINNEAPOLIS CENTER <b>132.05 317.4</b>	GCO <b>121.725</b>	UNICOM <b>123.0 (CTAF)</b>
----------------------------	---	-----------------------	-------------------------------



ELEV 1648	<b>D</b>	TDZE 1621
-----------	----------	-----------



CATEGORY	A	B	C	D
LPV DA		1821-½	200 (200-½)	
LNAV/VNAV DA		1948-⅝	327 (300-⅝)	
LNAV MDA	2000-½	379 (400-½)	2000-⅝	379 (400-⅝)
<b>C</b> CIRCLING	2140-1 492 (500-1)	2160-1 512 (600-1)	2340-2 692 (700-2)	2340-2¼ 692 (700-2¼)

HIRL Rwy 12-30 **Ⓛ**  
 MIRL Rwy 17-35 **Ⓛ**  
 REL Rwy 17, 30 and 35 **Ⓛ**

NC-1, 15 MAY 2025 to 12 JUN 2025

NC-1, 15 MAY 2025 to 12 JUN 2025