

WAAS CH <b>50505</b> <b>W14A</b>	APP CRS <b>136°</b>	Rwy ldg <b>6500</b> TDZE <b>266</b> Apt Elev <b>272</b>
--	------------------------	---

# RNAV (GPS) RWY 14

HARDY-ANDERS FLD/NATCHEZ-ADAMS COUNTY (HE/Z)

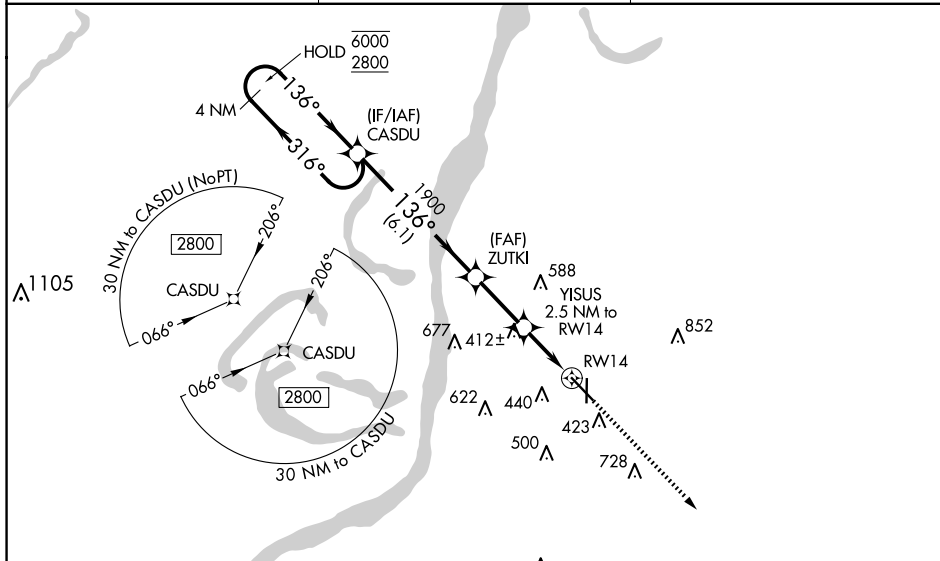
RNP APCH - GPS.

**⚠** Circling Rwy 36 NA at night. Rwy 14 helicopter visibility reduction below 3/4 SM NA. For uncompensated Baro-VNAV systems, LNAV/VNAV NA below -15° C or above 54° C. For inop ALS, increase LNAV Cats C and D visibility to 1 1/8 SM. Inop table does not apply to LPV, LNAV/VNAV, and LNAV Cats A and B.

MALSR

MISSED APPROACH: Climb to 2800 direct WEGRA and hold.

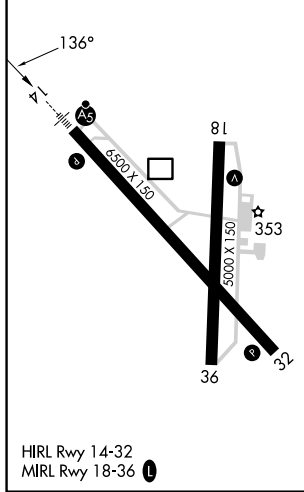
AWOS-3PT <b>124.675</b>	HOUSTON CENTER <b>120.975 299.6</b>	UNICOM <b>122.8 (CTAF)</b>
----------------------------	--	-------------------------------



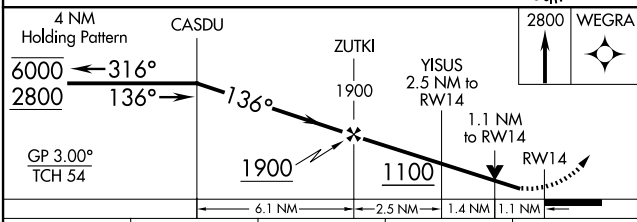
SC-4, 15 MAY 2025 to 12 JUN 2025

SC-4, 15 MAY 2025 to 12 JUN 2025

ELEV 272	TDZE 266
----------	----------



NATCHEZ, MISSISSIPPI  
Amdt 1C 20APR23



CATEGORY	A	B	C	D
LPV DA		575-1	309 (400-1)	
LNAV/VNAV DA		560-1	294 (300-1)	
LNAV MDA		680-1	414 (500-1)	
CIRCLING	740-1 468 (500-1)	820-1 548 (600-1)	1020-2 1/4 748 (800-2 1/4)	1220-3 948 (1000-3)

HARDY-ANDERS FLD/NATCHEZ-ADAMS COUNTY (HE/Z)  
31°37'N-91°18'W

# RNAV (GPS) RWY 14