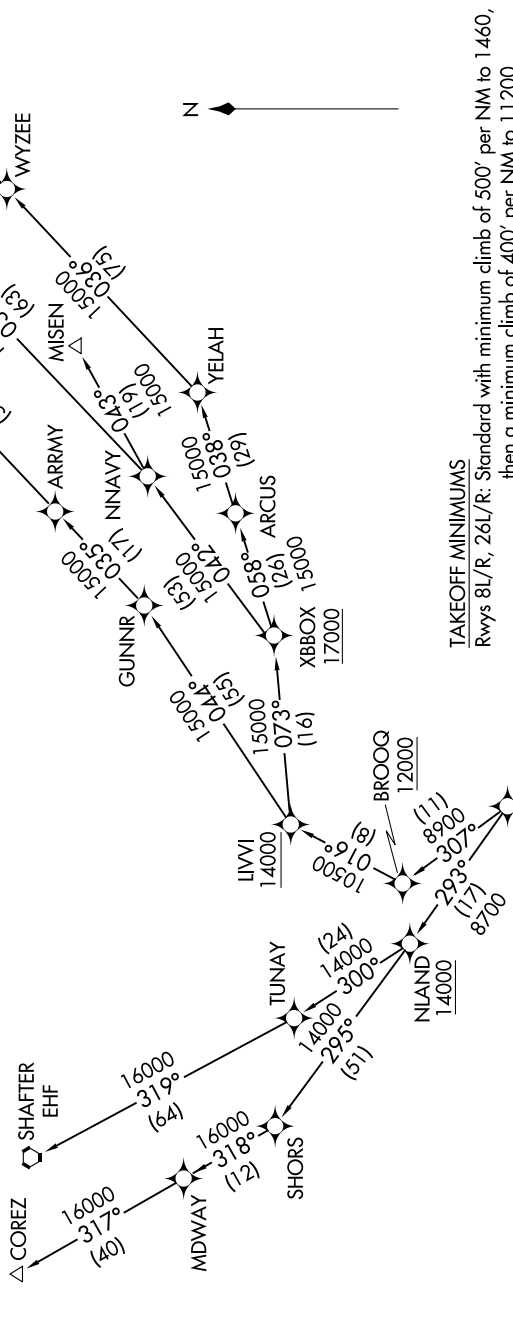


SW-3, 15 MAY 2025 to 12 JUN 2025

**TOP ALTITUDE:
FL230**

NOTE: RNAV 1.
 NOTE: RADAR required.
 NOTE: DME/DME/IRU or GPS required.
 NOTE: Turbojet and turboprop aircraft only.
 NOTE: MISEN transition restricted to aircraft landing LAS terminal area.
 NOTE: HAILO/BEALE/YELAH transition ATC only.
 NOTE: Maintain at or below 250K unless otherwise directed by ATC.

D-ATIS 124.25
 CLNC DEL 132.9
 CPDLC 132.9
 GND CON 121.9 237.8
 ONTARIO TOWER 120.6 360.775
 SOCIAL DEP CON 125.5 349.0



NOTE: Chart not to scale.

(CONTINUED ON FOLLOWING PAGE)

SW-3, 15 MAY 2025 to 12 JUN 2025