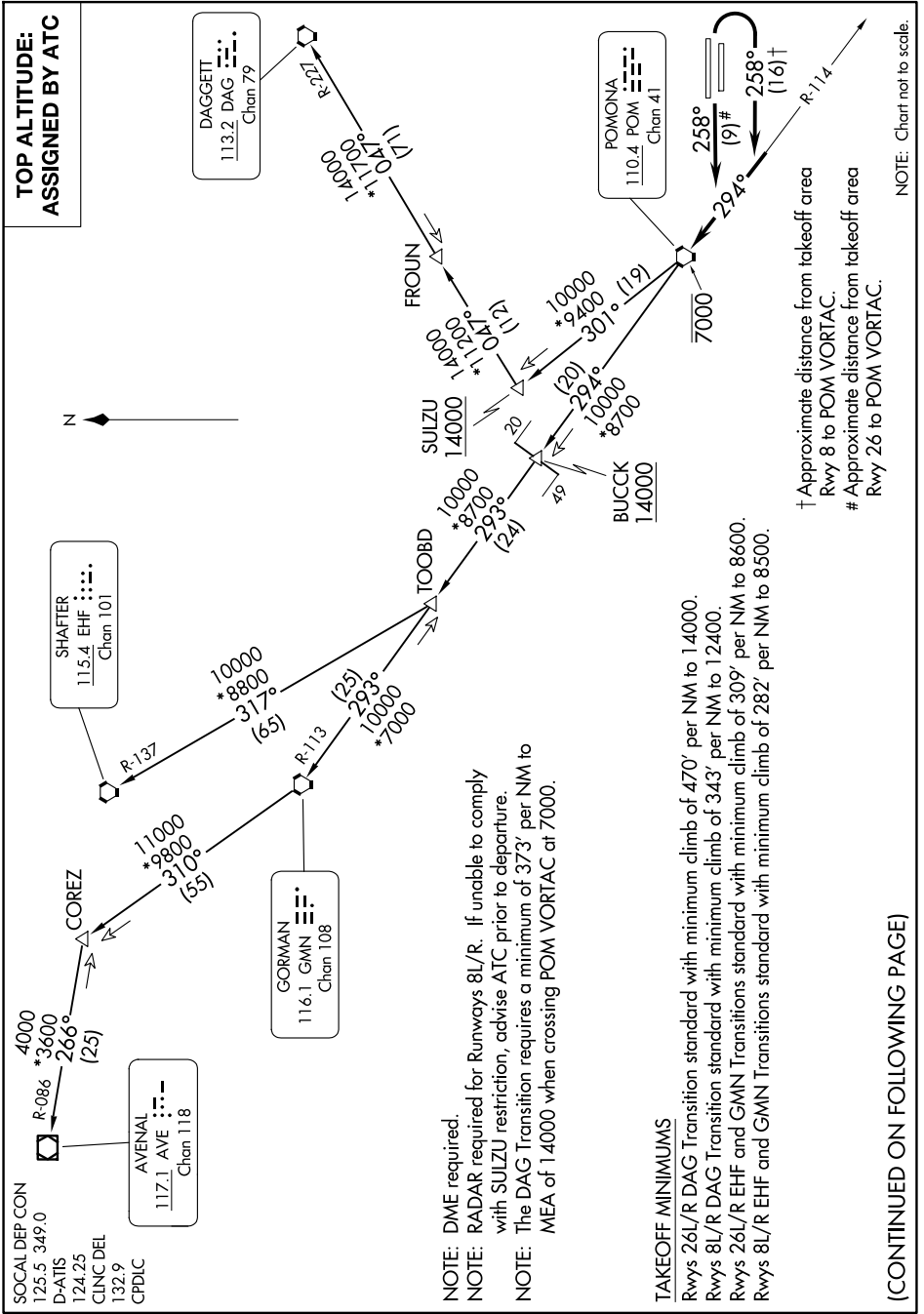


POMONA ONE DEPARTURE

AL-965 (FAA)

ONTARIO INTL (ONT)
ONTARIO, CALIFORNIA

SW-3, 15 MAY 2025 to 12 JUN 2025



**TOP ALTITUDE:
ASSIGNED BY ATC**

NOTE: DME required.
 NOTE: RADAR required for Runways 8L/R. If unable to comply with SULZU restriction, advise ATC prior to departure.
 NOTE: The DAG Transition requires a minimum of 373' per NM to MEA of 14000 when crossing POM VORTAC at 7000.

TAKEOFF MINIMUMS

Runways 26L/R DAG Transition standard with minimum climb of 470' per NM to 14000.
 Runways 8L/R DAG Transition standard with minimum climb of 343' per NM to 12400.
 Runways 26L/R EHF and GMN Transitions standard with minimum climb of 309' per NM to 8600.
 Runways 8L/R EHF and GMN Transitions standard with minimum climb of 282' per NM to 8500.

† Approximate distance from takeoff area
 Rwy 8 to POM VORTAC.
 # Approximate distance from takeoff area
 Rwy 26 to POM VORTAC.

NOTE: Chart not to scale.

(CONTINUED ON FOLLOWING PAGE)

SW-3, 15 MAY 2025 to 12 JUN 2025

POMONA ONE DEPARTURE

ONTARIO, CALIFORNIA
ONTARIO INTL (ONT)