

SW-3, 15 MAY 2025 to 12 JUN 2025

ARRIVAL ROUTE DESCRIPTION

ELKEY TRANSITION (ELKEY.KARLB3)

FICKY TRANSITION (FICKY.KARLB3)

ROSIN TRANSITION (ROSIN.KARLB3)

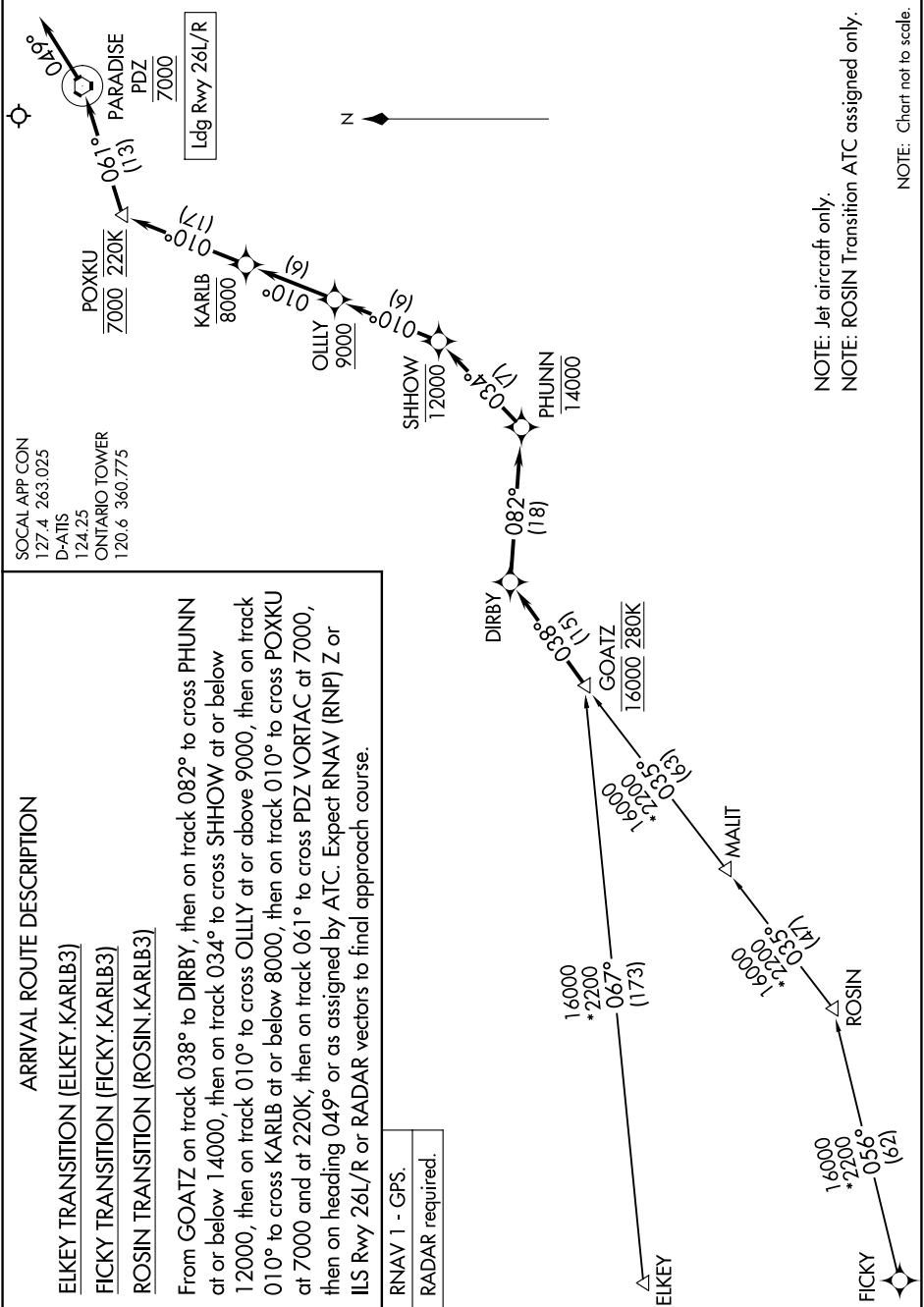
From GOATZ on track 038° to DIRBY, then on track 082° to cross PHUNN at or below 14000, then on track 034° to cross SHHOW at or below 12000, then on track 010° to cross OLLY at or above 9000, then on track 010° to cross KARLB at or below 8000, then on track 010° to cross POXKU at 7000 and at 220K, then on track 061° to cross PDZ VORTAC at 7000, then on heading 049° or as assigned by ATC. Expect RNAV (RNP) Z or ILS Rwy 26L/R or RADAR vectors to final approach course.

RNAV 1 - GPS.

RADAR required.

SOCAL APP CON  
127.4 263.025  
D-ATIS  
124.25  
ONTARIO TOWER  
120.6 360.775

Ldg Rwy 26L/R  
7000



NOTE: Jet aircraft only.  
NOTE: ROSIN Transition ATC assigned only.

NOTE: Chart not to scale.

SW-3, 15 MAY 2025 to 12 JUN 2025