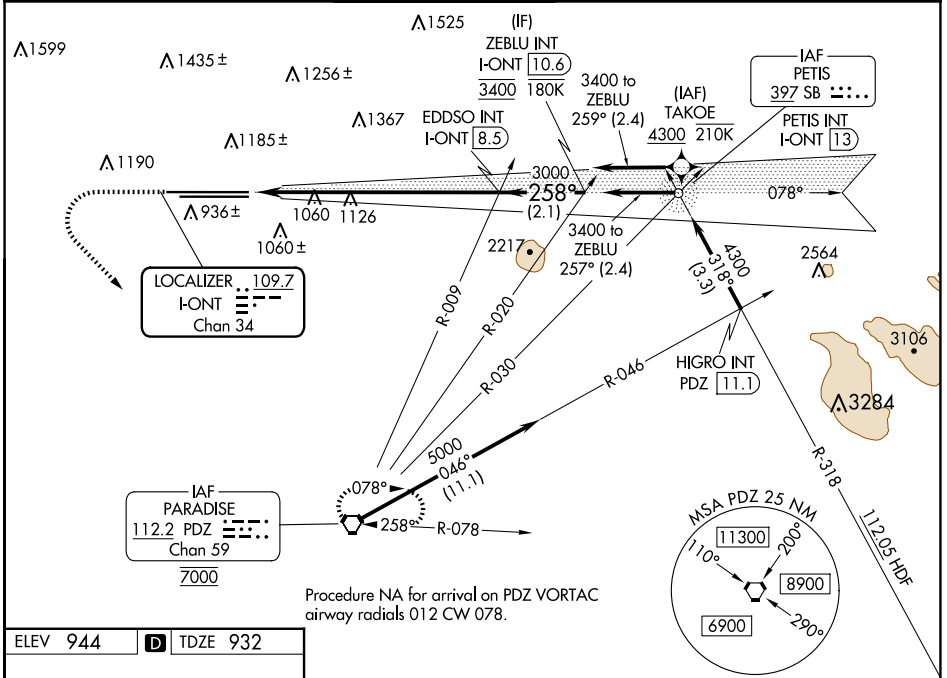


LOC/DME I-ONT 109.7 Chan 34	APP CRS 258°	Rwy Idg TDZE 932 Apt Elev 944
---	------------------------	---

ILS RWY 26R (CAT II & III)

ONTARIO INTL (ONT)

RNP APCH - GPS. From TAKOE.		ALSF-2	MISSED APPROACH: Climb to 2800 then climbing left turn to 5400 direct PDZ VORTAC and hold, continue climb-in-hold to 5400.		
D-ATIS 124.25	SOCAL APP CON 127.0 318.2	ONTARIO TOWER 120.6 360.775	GND CON 121.9 257.8	CLNC DEL 132.9	CPDLC



SW-3, 15 MAY 2025 to 12 JUN 2025

SW-3, 15 MAY 2025 to 12 JUN 2025

ELEV 944	D	TDZE 932			
2800	5400	PDZ	VGSI and ILS glidepath not coincident (VGSI Angle 3.00/TCH 75).	ZEBLU INT I-ONT (10.6)	
		EDDSO INT I-ONT (8.5)	3000	258°	3400
		3000	258°	3000	GS 3.00° TCH 60
11.63'		6.3 NM		2.1 NM	
CATEGORY	A	B	C	D	
S-ILS 26R	CAT II RA 100/12 100 DA 1032				
S-ILS 26R	CAT III RVR 03				
CATEGORY II & III ILS - SPECIAL AIRCREW & AIRCRAFT CERTIFICATION REQUIRED					

TDZ/CL Rwy 8L, 26L and 26R
HIRL Rwy 8L-26R and 8R-26L

ONTARIO, CALIFORNIA
Amdt 6 10AUG23

34°03'N-117°36'W

ONTARIO INTL (ONT)
ILS RWY 26R (CAT II & III)